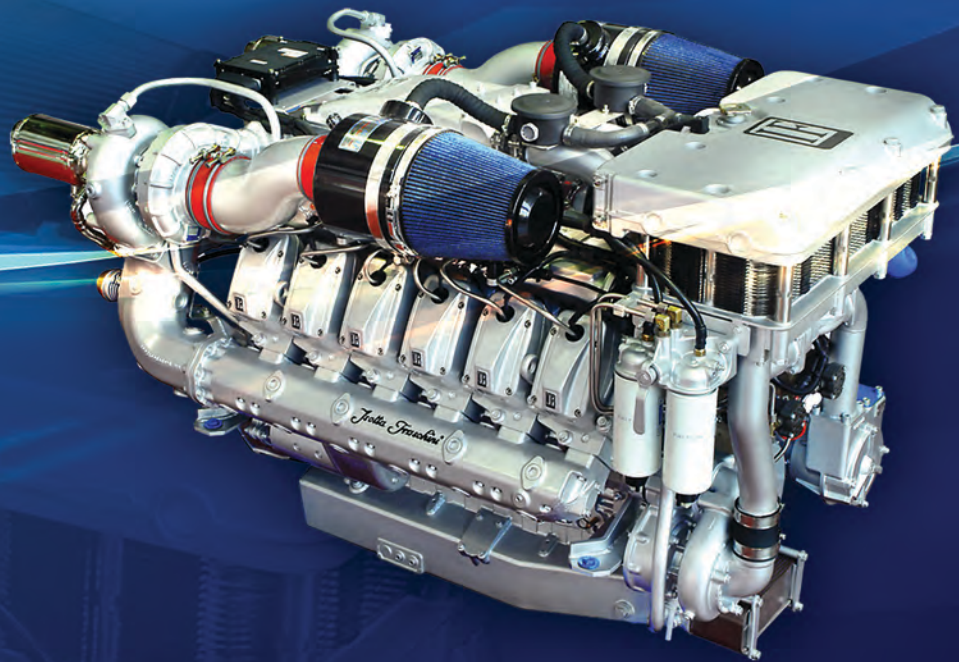


FINCANTIERI
marine systems
North America Inc.

DIESEL ENGINE PARTS CATALOG



Your Premier Source for Integrated
Marine Systems & Components



FOR MORE INFORMATION OR TO ORDER CONTACT:
FINCANTIERI MARINE SYSTEMS NORTH AMERICA, INC.
800-C PRINCIPAL COURT | CHESAPEAKE, VA 23320
24 HOUR HELP DESK 877-436-7643
GOVPARTS@FMSNA.COM OR USNHD@FMSNA.COM

May 2018 Diesel Engine Parts List

1010	10 MICRON ELEMENT	32.87
1030	30 MICRON ELEMENT	84.51
1810	10 MICRON ELEMENT	44.87
2000	LID GASKET	14.02
10133	PISTON	156.51
10361	BOWL GASKET FOR 2000/10	9.32
15064	SWITCH,TOGGLE	265.74
15475	HCS 1-8 X 6 YZ8	11.75
24916	TEST SOCKET,FIRE EX	337.46
24917	CIRCUIT BREAKER	514.53
25504	CIRCUIT BREAKER	410.89
26948	TRIPPER,CIRCUIT BRE	145.61
30248	CUTTING RING 9202-15	4.53
30366	DRAIN VALVE FOR 2000/5, 5/50, /10, /18D	42.62
30558	BLEED VALVE ORING	2.16
30569	RING,RETAINING	17.09
31000	BRACKET PILOT VALVE MOUNTING SSDG	256.46
40002	O-RING FOR DRAIN VALVE	1.08
48356	GASKET	7.30
60595	M8-1.0X1.5D WIRE INSERT	0.80
62059	HOSE CLAMP	4.11
71358	REDUCTION	104.34
72223	CROSS-HEAD ASSY	596.44
72299	GAUGE FOR BEVEL GEAR SET	3909.19
73673	STAND, ENGINE POST (EA)	642.70
92715	MANOMETER 92715	227.00
191544	STARTER SOLENOID	506.02
201541	TOOLS FOR INJECTOR CLEAN	3367.75
202414	Level Indicator, Dial	364.66
306765	ORING	15.88
314839	FUEL COOLER ZINC	69.56
375016	COUPLING,SHAFT,RIGI	598.42
406947	SWITCH,WATER TEMPER	305.83
408263	PRESSURE SWITCH	1355.82
906934	SURGE SUPPRESSOR	485.93
909317	SHIM KIT	1420.66
910021	MUFFLER	21.53
911012	TIMER	499.94
911016	TURBO KIT	7227.05
911082	GASKET 0303835	17.06
911108	GASKET 0304125	9.94
911206	SEALS KIT MANN-HUMMEL	108.51
911207	PAPER INSERT	66.08
911231	DC CONFIGURABLE CONVERTER	651.10
911232	CURRENT CONTROL RELAY	536.49
911284	TEMPERATURE GAUGE 24Vdc 120°C	367.90
912698	PULSE COUNTER	813.81
913350	CABINET, LOP	5399.28
913351	BREAK SWITCH	419.94
911384	KEY SELECTOR SWITCH 2-POSITIONS	80.42
911377	VOLTAGE SELECTOR SWITCH 2 POSITIONS	95.98
913352	INSERT FEMALE 72 PIN WITH HOUSING	439.94
913353	PIN FOR INSERT 72 WITH HOUSING	3.59
913354	INSERT FEMALE 40 PIN WITH HOUSING	419.94
913355	PIN FOR INSERT 40 WITH HOUSING	3.59
911362	AUXILIARY RELAY	332.48
911400	DIFFERENTIAL SWITCH	409.91
911401	FLAT SEAL RING	4.79
911494	AIR SCREW 30408	4.82
911507	GEARS B40/11	260.84
911508	DRIVING SHAFT B40/24	118.25
911509	DRIVING SHAFT B40/21	146.94
911513	SLEEVE, BEARING	760.77
911514	SLEEVE, BEARING	717.30
911526	LEAKAGE INDICATOR SYSTEM	11891.05

- Price and part number listed are valid for the North America market only
 - Price and part number listed may be changed without notice
 - Notwithstanding, the only binding price and part number are those identified in FMSNA Inc.'s official offer
 - Parts listed may be subject to U.S. export controls and subject to licensing if exported outside of the U.S.

May 2018 Diesel Engine Parts List

911669	BOTTOM RUBBER	569.93
911672	AIR STARTER PINION	929.88
911675	UPPER RUBBER	389.95
911770	SPRING	64.78
911800	FUEL COOLER ZINC	69.56
911803	FUEL COOLER OVERHAUL KIT	163.46
911970	GASKET KIT	3095.25
911973	PLUG	25.35
911983	THERMOSTAT	2057.06
912103	PLUG	10.00
912104	TACHIMETER 0-4000 RPM EEH 12-24V	909.79
912107	LUBE OIL KIT	1631.79
912121	PRELUB. VALVE V2	309.52
912131	PATCH-CORD CN1-022	2784.17
912227	AUXILIARY RELAY	67.61
912256	FUSE STI 10.3X38/ 15636	62.40
912257	FUSE STI 1P 22X58 / 1411063/ 1	159.18
912258	AUTOMATIC BREAKER 24914 C60H 2P CURVE C	547.91
912259	AUTOM. BREAKER C60H 2P 4A	404.84
912260	AUTOM. BREAKER C60H 2P 6A 24917	513.54
912261	C60H 3P 10A CIRCUIT BREAKER (24932)	776.93
912262	VARIABLE AUTOMATIC BREAKER 3P	525.99
912263	FUSE STI 2P 14X51 15710	220.77
912266	DOUBLE DIODE ANTIPARALLEL	508.74
912270	3 POS KEY SWITCH XB4BG41	226.43
912316	KIT OF GASKETS	902.28
912320	RETAINER DISC 60-3430212	961.53
912321	RETAINER DISC 60-3420212	961.53
912322	LAMP, VOLTAGE PRESENCE	873.49
912324	BEARING HOLDER 60-3910212	965.11
912330	HEATER 23V103029003000	1625.53
912331	THERMOSWITCH KP81 060L11566	1064.21
912332	ELECTRIC PUMP UP25-72 180	3560.39
912333	GASKET 06BEL03505A	752.96
912334	BUSHING 06BEL03505B	555.41
912335	GASKET, COPPER 06IFM035011	18.00
912336	TEMPERATURE SWITCH X10-232-001-001	579.92
912337	CLAMP, RUBBER 06BEL03514	21.89
912338	MANOMETER 0-10 BAR DN50 RAD G 1/4" 92175	286.80
912339	GASKET 5125058	133.98
912340	GASKET 0302703	8.07
912341	GASKET 0301202	2.94
912342	PLUG 5127086	120.18
912343	GASKET 301125	4.79
912344	FILTER 772002401	86.60
912345	GASKET 0301702	2.94
912346	PIN 25-0091901	3.60
912347	DISC, OIL RETAINER 60-0040212	1119.04
912348	FUSE STI 3P 15656	119.14
912350	GASKET 0300615	3.24
912351	GASKET 0300625	3.24
912354	RELAY, UNDERVOLTAGE 220V 60Hz	3969.48
912386	AIR STARTER VALVE 5202175	348.32
912416	HORN SIGNAL	276.47
912428	ENGINE SAFETY SWITCH	284.88
912560	1800 RPM TACHOMETER	1381.68
912571	CIRCUIT BREAKER	478.41
912572	CIRCUIT BREAKER	348.39
912573	CONTACTORS	292.97
912574	INCANDESCENT BULB	11.48
912575	AUXILIARY RELAY	65.49
912577	TFT 640X4890 OPERATOR PANEL	18270.57
912603	METERING UNIT	6091.02
913045	SPACER-60-6810212	151.18
913046	SHAFT- S/W PUMP	1419.78

- Price and part number listed are valid for the North America market only
 - Price and part number listed may be changed without notice
 - Notwithstanding, the only binding price and part number are those identified in FMSNA Inc.'s official offer
 - Parts listed may be subject to U.S. export controls and subject to licensing if exported outside of the U.S.

May 2018 Diesel Engine Parts List

913052	SPACER-60-6800212	207.00
913109	SEAL	317.81
913110	ELASTIC ELEMENT	15858.77
913111	MEMBRANE 2K57620029-C	15267.55
913138	SAFETY VALVE	754.30
913159	AUTOMATIC BREAKER	596.99
913160	AUTOMATIC BREAKER	596.99
913161	AUTOMATIC BREAKER	674.84
913253	PUMP GASKET KIT	226.06
913459	ROTATING DIODE (INVERSE)	323.95
913460	ROTATING DIODE (DIRECT)	323.95
2814605	CONVERTER,FREQUENCY	504.91
3003946	RATE SENSOR	1074.48
3005346	END,ROD	13165.58
3005374	MODEM,FIBER OPTIC	2194.20
3005482	ACTUATOR ASSEMBLY	91901.98
3005485	ACTUATOR MOUNT	8764.74
3005767	PC104 CORE CONTROLLER MOTHERBOARD	4594.68
3005768	PC104 DUAL CAN PWB ASSEMBLY	1575.74
3005769	PROFIUS/RS-232 INTERFACE	4623.48
3005770	PC104 MULTI-I/O PWB	2306.19
3005772	CLINOMETER ASSEMBLY	1151.33
3005774	LINE FILTER/SURGE PROTECTOR	498.18
3005914	MAIN MULTIO I/O PWB ASSEMBLY	5941.97
3006402	ACCELEROMETER ASSEMBLY	3858.33
5127086	MEMBRANE 5127086	122.25
7057956	POWER ASSY CHANGE OUT KIT	1877.90
7057960	KIT, EXHAUST MANIFOLD RH	301.13
7057961	KIT, EXHAUST MANIFOLD LH	309.60
7057962	TURBO CHANGE OUT GASKET KIT	656.56
7057963	KIT, TURBO RH	237.49
7057964	KIT, TURBO LH	237.49
7057965	LUBE OIL FILTER CHANGE KIT	106.58
7057967	OIL PAN KIT	229.24
7057969	LUBE OIL COOLER GASKET KIT	176.62
7057970	AIR INTAKE MANIFOLD GASKET KIT	167.44
7057972	REAR OIL SEAL GASEKT KIT	405.87
7057974	GASKET KIT	614.83
7379079	TURBO GASKET CHANGE OUT	876.11
602003001	DEVICE WITH MANUAL ONLY TEST PROCEDURE	67912.74
602003011	OVEN FOR TEMPERATURE SENSOR TEST	8335.60
602003021	PERIPHERAL JOYSTICK AND BUZZER UNIT	2567.66
1410105002	GASKET	5.08
1900023013	WOODRUFF KEY	5.22
2430100532	SHIM	2.37
2911222700	BOLT, MACHINE	11.98
2916710611	COPPER WASHER	2.16
3551035401	INNER MEMBER	15914.41
3551291401	KEEP PLATE	5039.34
8533660000	MODULE,RELAY,1 NO6A	108.16
485270240050	MAX 10A COIL 24VDC AUXILIARY RELAY	36.69
00A11200	FUEL INJECTION PIPE	852.07
00A11300	FUEL INJECTION PIPE	852.07
00A11400	FUEL INJECTION PIPE	852.07
00A11500	FUEL INJECTION PIPE	852.07
00A11600	FUEL INJECTION PIPE	852.07
00A11700	FUEL INJECTION PIPE	852.07
00A11800	FUEL INJECTION PIPE	852.07
00A11900	FUEL INJECTION PIPE	852.07
00A12000	FUEL INJECTION PIPE	852.07
00A12100	FUEL INJECTION PIPE	852.07
00A12200	FUEL INJECTION PIPE	852.07
00A12300	FUEL INJECTION PIPE	852.07
00A18200	CLAMP	268.14
00A20500	FUEL INJECTOR GASKET	4.73

- Price and part number listed are valid for the North America market only
 - Price and part number listed may be changed without notice
 - Notwithstanding, the only binding price and part number are those identified in FMSNA Inc.'s official offer
 - Parts listed may be subject to U.S. export controls and subject to licensing if exported outside of the U.S.

May 2018 Diesel Engine Parts List

00A23000	WATER SENSOR	5779.24
00A23200	BANJO BOLT M10	95.99
00A34300	AIR REGULATOR PRESSURE VALVE	849.02
00A35700	CROSSBAR FOR FRONT ENGINE FEET	5063.68
00A62300C	COMPLETE ROCKER ARM	1339.83
00A67600	GASKET	22.61
00A68000	CONNECTING ROD BUSHING	373.52
00A68200	SEAL	20.52
00A68300	RESILIENT WASHER	30.92
00A68400	RESILIENT END STROKE	857.30
00A71400CA	CONROD COMPLETE ABS TESTED	3721.25
00A93000	BLOCK	46.54
00A95000	RING, WATER PUMP SEAL	77.61
00A95601CA	CYLINDER HEAD COMPLETE V1700 HP ABS	9581.34
00A96602	INTAKE MANIFOLDS	5039.34
00A96802	INTAKE MANIFOLDS	4199.45
00A98901	HP COMMON RAIL PUMP GEAR	2165.98
00A99300SP	INJECTOR SPIN	15.65
00B00401	NOZZLE TUBE HOLDER	211.98
00B00700	PISTON	2094.38
00B01300	BENDED BRACKET	66.24
00B03000	MANIFOLD GASKET	23.01
00B03100	ADAPTER	59.23
00B03200	ADAPTER	5.06
00B03800	DEPERMED LEVER SUPPORT	257.35
00B08300	SPACER SP5- LCS	15.65
00B10200	PLATE	215.62
00B10300	SPEED SENSOR	173.45
00B10400	TEMPERATURE TRANSMITTER TF-W 0281002209	111.10
00B10600	TEMPERATURE SENSOR	259.74
00B10701	PRESSURE/TEMP. SENSOR DS-K-TF	297.35
00B10800	PRESSURE TRANSMITTER	250.51
00B10900	TEMPERATURE TRANSMITTER	368.98
00B10902C	TEMPERATURE SENSOR	1307.38
00B18100M91	I.P. DRIVE ASSEMBLY	16925.76
00B19400	GASKET	28.17
00B19500C	GASKET	148.78
00B28300	SEA WATER PUMP	9478.75
00B30801	SEA WATER PUMP GEAR	1711.08
00B31500	DAMPER PROTECTION	2949.21
00B38500	GASKET FOR HOLE PLUG OIL PUMP	26.61
00B39600	SEA WATER PUMP GEAR	2817.23
00B39700	OIL PUMP GEAR	2385.77
00B41500C	COMPL. NON-RETURN VALVE	239.97
00B41700C	OVERPRESSURE VALVE ASSY	389.95
00B64900	PREHEATING UNIT	16558.96
00B69200C A	V1312 CRANKSHAFT ABS	41666.04
00B69501	FLANGE	177.42
00B72800	VACUUM REGULATOR	874.79
00B72900SP	REGULATOR BRACKET	109.19
00B73000	TUBO FLESSIBILE	187.18
00B73400	CHECK VALVE 1/4" NPT	186.66
00B88600C	FUEL OIL REFLUX FROM RAIL	364.76
00B88700C	FUEL OIL REFLUX FROM RAIL	364.76
00B89400	INJECTOR PLUG	172.15
00B89600	RAIL PRESSURE SENSOR	137.99
00B95800C	COMPLETE OIL PUMP	4360.19
00B97600C	FRESH WATER PUMP	5677.05
00C01000	RAIL OVERPRESSURE VALVE	1385.82
00C01800	WATER PUMP SEAL	39.65
00C01900	STATOR, WATER PUMP	18.16
00C12800C	FRESH WATER PUMP	9438.75
00C12900C	FRESH WATER PUMP	9076.80
00C29000	HEAT PROTECTION	705.91
00C29100	HEAT PROTECTION	1047.87

- Price and part number listed are valid for the North America market only
 - Price and part number listed may be changed without notice
 - Notwithstanding, the only binding price and part number are those identified in FMSNA Inc.'s official offer
 - Parts listed may be subject to U.S. export controls and subject to licensing if exported outside of the U.S.

May 2018 Diesel Engine Parts List

00C29600	BOSCH INJECTOR 1700HCPR	7000.81
00C44700CSP	INTERCOOLER AIR-WATER	59509.72
00C53200	TURBOCHARGER	50223.35
00C53900	MAIN BEARING	1500.67
00C58600	CONNECTOR	34.02
00C65500	CONNECTOR	87.64
00C69800C	REFLUX FUEL PIPE	1029.31
00C70900	RUBBER GASKET RAIL ARMOR	1.27
00C72800	ONE WAY VALVE 9/16-18 JIC - FITTING G 1/4	215.19
00C72801	ONE WAY VALVE 9/16-18 JIC-FITTING G1/4	235.17
00C80600C	RH EXHAUST MANIFOLD ASSEMBLY	3713.77
00C81100	GAS GASKET	106.37
00C81302	LH EXH MANIFOLD BRACKET	1292.82
00C82400	GAS GASKET	4.68
00C89800	UNION PIECE	47.35
00C90200	BLOCK FOR PIPE	79.38
00C90300	BLOCK FOR PIPE	83.61
00C93100	INTERCOOLER	38803.49
00C93400	INTERCOOLER GASKET	1205.97
00C93500	AIR GASKET	4.35
00C93501	AIR GASKET	9.60
00C93800	OIL COOLER BRACKET	711.21
00C94700	FLEX PIPE	978.57
00C96500C	OIL FILTER ASSEMBLY	9603.41
00C99700C	FLYWHEEL ASSEMBLY	2510.97
00D00600C A	HPCR ENGINE HEAD WITH VALVE ASSY	8010.14
00D01700	BLOCK FOR PIPE	89.77
00D12800	COVER- LCS	1005.08
00D12900C	DRAIN TUBE	151.28
00D13000C	DRAIN TUBE	151.28
00D13100C	DRAIN TUBE	151.28
00D19500C	CONNECTING ROD BEARING COMPLETE	299.77
00D19700C	AIR FILTER- RIGHT AIR SEP	2070.93
00D19800C	AIR FILTER- LEFT AIR SEP	2070.93
00D19900	BLOW-BY PIPING	3167.58
00D20200	AIR FILTER BRACKET	67.20
00D20300	AIR FILTER BRACKET	131.99
00D23800C	LEFT EXHAUST GAS ASSEMBLY	3731.51
00D24700	AIR CONVEYOR	3863.49
00D30800C	INJECTOR	5300.17
00D33600	DEPERMING LEFT CAMSCHAFT DRIVE GEAR	3586.48
00D33700	FUEL PUMP MOUNTING FLANGE DEPERMED	2088.42
00D33800	FUEL PUMP DRIVE FLANGE DEPERMED	2643.64
00D33900	CONNECTING ROD DEPERMED	5564.48
00D34400	GASKET	2.75
00D34900	HPCR PUMP V1312C2ME	10890.53
00D35100	ALARM LEAKAGE	1481.08
00D36200	FLANGED HEXAGONAL SCREW M10X30	34.78
00D37100	LEFT EXHAUST ELBOW	2649.25
00D37200	RIGHT EXHAUST ELBOW	2649.25
00D37300	FLANGE	813.81
00D38800	ALARM LEAKAGE	1091.86
00D38900	ALARM DISCHARGE TANK	1273.84
00D40500	THERMAL INSULATION	876.41
00D40600	HEAT PROTECTION ELBOW	779.90
00D43900C	FUEL HEAT EXCHANGER ASSY	6570.33
00D44500C	PLATE PACK ARRANGEMENT	9824.78
00D45600	STARTING AIR FLANGE	1091.86
00D45900	ENGINE STARTER A27	20272.67
00D46800A	ELASTIC COUPLING	36930.88
00D49200C	HEAD COVER	1355.82
00D49300	PACKING	43.81
00D50300	HEAD COVER	1355.95
00D51200	STUD	38.40
00D51800C	TURBOCHARGER V1312C2ME	8694.50

- Price and part number listed are valid for the North America market only
 - Price and part number listed may be changed without notice
 - Notwithstanding, the only binding price and part number are those identified in FMSNA Inc.'s official offer
 - Parts listed may be subject to U.S. export controls and subject to licensing if exported outside of the U.S.

May 2018 Diesel Engine Parts List

00D53000C	INLET OIL PIPE	319.16
00D53100C	OIL PIPE	303.96
00D54800C	RH OIL FUEL DELIVERY PIPE HP PUMP TO RAIL	1138.74
00D55700	FUEL WATER SEPARATOR	6025.61
00D56100	FILTERING ELEMENT	1635.29
00D57200C	WATER PREHEATING UNIT	16285.29
00D58100	INTERCOOLER SPACER	631.23
00D58200	INTERCOOLER SPACER BELLOW	322.08
00D58400	GASKET	16.91
00D58600	PRESSURE TRANSDUCER	1164.67
00D58601	TRAS. PRESS. 0-10bar MBS-2150-2016-6GB04	1330.58
00D58800	CONVERTER CAN/SWITCH LB9R MAHTECHS	5939.22
00D59000	GASKET, GAS EXHAUST TURBO	62.90
00D59500	HPP O-RING	3.48
00D59900C	ASSEMBLY FILTER	2457.02
00D60400	DEVIATOR VALVE	458.34
00D60501C	FUEL FILTER COMMUTABLE HEAD	5126.97
00D60900	BUSH FILTER ELEMENT	129.84
00D61000	HOLDER, FILTER ELEMENT FUEL	3.48
00D61100C	COMMUTABLE FUEL FILTER	8242.39
00D61101C	COMMUTABLE FUEL FILTER	6553.91
00D61300	WASHER	26.40
00D61400	ONE WAY VALVE	90.71
00D62100	AIR FLAP VALVE HOUSING	739.11
00D62200	AIR MANIFOLD BRACKET	175.18
00D62300	FLAP AIR VALVE BRACKET	195.58
00D63200	V-CLAMP ϕ nom.85	179.13
00D63400	DIESEL BLOCK	8086.06
00D63900	WIRING HARNESS	10914.50
00D64100	DES1300 WIRING	12495.15
00D64200	LCP & JB 12m PATCH CORDS	14398.10
00D64500A	LOCAL OPERATING PANEL	44863.62
00D64900	DIESEL PUMP BLOCK PIPE	332.06
00D65400	HOLE SCREW	76.79
00D66600C	MAHTECHS DES1300 WITH DG PROGRAM	15669.66
00D66800	DASHBOARD MAHTECH	6585.91
00D66900C	MINISVD R 2 MAHTECHS WITH JOYS	21998.57
00D67700	FLOCS SUPPORT	496.22
00D68300	RAIL SX REFLUX PIPE	189.99
00D68400	RAIL DX REFLUX PIPE	189.99
00D70000	TRAS. PRESS. 0-10bar MBS-3150-2011-6BB04	1230.46
00D70200	THERMOSWITCH FLANGE GASKET	4.70
00D70700	RUBBER GASKET RAIL ARMOR	10.80
00D71700	SPRING FOR VALVE	34.78
00D72100	HPCR RAIL	1717.16
00D74401C	COVER DISTRIBUTION COMPLETE	7651.93
00D75800C	SEA WATER PUMP PIPE DELIVERY	3251.83
00D76400	FIRE FIGHTING COLLAR 624-60	301.74
00D78000	OIL FILTER	227.80
00D82400	THERMAL INSULATION FOR METALLIC BELLOW	851.89
00D83100	HALF RING FOR WATER PIPE	0.61
00D85700	GEAR BOX HP PUMP	3862.10
00D87400	GEAR SECONDARY SHAFT	1874.76
00D87401	GEAR PRINCIPAL SHAFT	2089.73
00D87600	MIDDLE GEAR	2574.67
00D88101C	GEAR BOX HP PUMP	15371.88
00D90100	BOSCH CONTROL UNIT EOU EDC7 UC31 w/o ETK	14076.05
00D90400	ELECTRIC BOX SUPPORT	347.96
00D91500A	FLEXIBLE HOSE ABS TEST CERTIFICATION	743.91
00D91600A	FLEXIBLE HOSE ABS TEST CERTIFICATION	743.91
00D91700A	FLEXIBLE HOSE ABS TEST CERTIFICATION	706.31
00D91800A	FLEXIBLE HOSE ABS TEST CERTIFICATE	1147.05
00D91900A	FLEXIBLE HOSE ABS TEST CERTIFICATION	2457.28
00D92800A	FLEXIBLE HOSE ABS TEST CERTIFICATION	730.34
00D93500C	VIBRATION DAMPER	947.88

- Price and part number listed are valid for the North America market only
 - Price and part number listed may be changed without notice
 - Notwithstanding, the only binding price and part number are those identified in FMSNA Inc.'s official offer
 - Parts listed may be subject to U.S. export controls and subject to licensing if exported outside of the U.S.

May 2018 Diesel Engine Parts List

00D93700	SCREW STUD	71.99
00D93800	BUSH	55.20
00D96500C	OIL FILTER ASSEMBLY	9512.13
00E01600	OIL FILTER BLOCK	2811.81
00E01700C	DUPLEX OIL FILTER ASSY	12773.22
00E02000	FLANGE	292.14
00E02700	PIPE	557.20
00E07100	GEAR HP PUMP AXLE	1224.84
00E13200	TWO WAYS VALVE	41.06
00E13900	CAMSHAFT GEAR RH	3759.51
00E14000	CAMSHAFT GEAR LH	3039.60
00E14400C	DOUBLE COUNTER GEAR COMPLETE	6903.43
00E14600CA	CRANKSHAFT, BALANCED	98143.52
00E15401	SEPARATOR FILTER SUPPORT	2930.05
00E16800	FUEL MANUAL PUMP	639.92
00E17200	TURBOCHARGER AIR INTAKE PIPE	535.23
00E17300C	WATER SEAL ENGINE WATER PUMP	119.99
00E28100	FILTER, CARTRIDGE	177.11
00E28200	INSIDER FILTER	664.36
00E31900	RELIEF VALVE	682.50
00E32000C	RELIEF VALVE FUEL PIPE	126.70
00E43500	RIM, RING GEAR	5514.06
00E49400	HEAD SPACER GASKET	31.06
00E57600M91	OIL PUMP AND FILTERS	19301.79
00E58400	FLEX PIPE	163.18
00E77800C	AIR SHUTDOWN VALVE	5877.49
00E81100	OIL HEAT EXCHANGER WATER DISTR	1365.04
00E81201	FLANGE	379.08
00E86400	PREHEATING UNIT 12KW	19030.52
00E86500	HEAT EXCHANGER OIL DISTRIBUTOR	8645.81
00E88700C	COOLER INLET SEA WATER PIPE	2504.02
00E90000	REF PINS	34.78
00E90400C	BELT TENSIONER	1924.96
00E93600	EXHAUST TEE-ASSEMBLY	5515.79
00E94200C	COMPLETE VALVE BRACKET	660.78
00E95200C	COMPLETE INTERCOOLER ASSY	10078.66
00E96400	WATER PIPE	1319.83
00E96600	PIPE CONNECTION	366.91
00E96700C	WATER PIPE	843.37
00E96900	UNION 45° JIC1"5/8-121"G	179.11
00E97000C	WATER PIPE	194.76
00E97800	BY-PASS PIPE	1246.80
00F00200	BRACKET TH.5	201.71
00F00300C	INTERCOOLER ASSY	9701.32
00F01000	DGS LCS HPCR LOCAL CONTROL PAN	111400.97
00F01200	SENSOR WIRING HARNESS	42394.39
00F05900	CONNECTING STUB	302.57
00F06000	NIPPLE	586.01
00F06100	OUTLET OIL SLEEVE	733.82
00F06200C	FRONT COVER ASSEMBLY	8449.32
00F07000	ECU BOSCH MS750	75207.43
00F14700A	FLEX PIPE 1"1/16-12 – L=800	1142.71
00F17201	PLATE	83.47
00F24600	PLATE	65.73
00F24700	GAS/WATER GASKET	425.67
00F26300	WIRING HARNESS	44594.09
00F36500C	WATER PIPE OUTLET	241.71
00F37000C	EMERGENCY SHUTDOWN ASSY	7292.95
00F45200	SAFETY BRACKET	33.04
00F46300	FRONT SEAL WATER PUMP MOTOR	76.62
00F46600	SAFETY VALVE	192.15
00F46800	MANUAL START BUTTON	102.60
00F46900	PNEUMATIC AIR FILTER	125.20
00F55800	AXIAL DISCHARGE MANIFOLD	6291.34
00F57800	SCREW M10X95	6.96

- Price and part number listed are valid for the North America market only
 - Price and part number listed may be changed without notice
 - Notwithstanding, the only binding price and part number are those identified in FMSNA Inc.'s official offer
 - Parts listed may be subject to U.S. export controls and subject to licensing if exported outside of the U.S.

May 2018 Diesel Engine Parts List

00F58200C	LH COVER OUTLET PIPE	114.77
00F58700	EXHAUST GAS EXPANSION JOIN PROTECTION	1384.17
00F61900C	CAM FOLLOWER BLOWBY 4V HPCR	3643.87
00F64900	SELF LOCKING NUT	45.13
00F66100CR	CONNECTING ROD ASSY RINA	3128.28
00F67900	INJECTOR COMMON RAIL SPARE PART KIT	56.00
00F71500	BEARING 20-0210212	143.93
00F71600	RING 60-0290612	218.05
00F71700	DOWEL M10X20	34.61
00F71800	OIL SEAL	60.12
00F72000	IMPELLER 60-1110212	1948.56
00F72100	SEAL OPPOSITE SIDE DISC	799.90
00F72300	O-RING 20-0080212	38.87
00F72400	Key A6X6X25 A4 (20-0200704)	5.69
00F72500	MECHANICAL SEAL 20-0521110	110.06
00F72600	SEAL, MECHANICAL20-0280704	73.66
00F72700	NUT	433.82
00F74200C	BRACKET PIPE	121.99
00F74600	OIL PIPE	318.76
00F81000	WATER DISSECTION	121.72
00F85700C	WATER PUMP COMPLETE	9438.75
00G11100C	STARTING AIR WITHOUT TESTING	16097.87
00G11200C	PNEUMATIC STARTER	15297.98
00G11300	PINION	1659.78
00G12400	INTERCOOLER GASKET (MUST BE SOLD IN CONJUNCTION WITH 00C93400)	1432.25
00G25500	BLOW BY FLEXIBLE PIPE	40.90
00G25501	BLOW BY FLEXIBLE PIPE	62.40
00G30900C	OIL DIPSTICK	349.96
00G42100C	CONTROL UNIT	88988.21
00G47000	THERMO STARTER FUEL "BERU"	367.96
00G47200	SOLENOID VALVE FUEL	151.98
00G47300	WATER TEMPERATURE SENSOR "BERU"	89.99
00G47400	CONTROL THERMO STARTER	819.90
00G57000	LEVER	161.98
00G62700	SEA WATER SEAL	108.22
00G64000CA	CYLINDER HEAD COMPLETE ASSY	8756.23
00G64900C	SAFETY VALVE ASSY	352.12
00G65200C	REGULATOR VALVE ASSY	2796.35
00G72900C	ECU EDC7 UC31	14952.41
00G73602	PRESSURE TRANSMITTER 0-6 BAR	820.76
00G73603	PRESSURE TRANSMITTER 0-10 BAR	820.76
00G73701	PRESSURE TRANSMITTER	820.76
00G73702	PRESSURE TRANSMITTER 0-6 BAR	820.76
00G73706	PRESSURE TRANSMITTER 0-40 BAR	820.76
00G73801	PRESSURE TRANSMITTER 0-6 BAR	879.89
00G85600	DOOR PLATE SUPPORT	131.46
00G88100	SPACER TH8	22.96
00G98900	BUSHING	660.35
00G99200C	SEA WATER PUMP DELIVERY PIPE	5210.08
00G99300C	BACKFLOW INTERCOOLER PIPE	6560.84
00G99600	SEA WATER PIPE INTERFACE	1410.32
00H12100	OIL PREHEATER	426.03
00H20800C	INTERWARM PIPE BOTTOM RH	328.65
00H20900C	INTERWARM PIPE BOTTOM LH	328.65
00H21000C	INTERWARM PIPE TOP RH	433.00
00H21100C	INTERWARM PIPE TOP LH	469.50
00H21200C	PREHEATING PIPE TOP	563.40
00H21300C	PREHEAT PIPE INTERFACE	714.69
00H21500	UNION	177.37
00H21600C	WATER PIPE COVER LH	170.41
00H21700	UNION	353.00
00H22201C	EBBS PIPE INJECTION PUMP	268.98
00H22301C	EBBS PIPE INJECTION PUMP	268.98
00H26000	HOSE FOR WATER	469.51
00H27300CA	CONNECTING RODS	2783.64

- Price and part number listed are valid for the North America market only
 - Price and part number listed may be changed without notice
 - Notwithstanding, the only binding price and part number are those identified in FMSNA Inc.'s official offer
 - Parts listed may be subject to U.S. export controls and subject to licensing if exported outside of the U.S.

May 2018 Diesel Engine Parts List

00H30100C	REFLUX PIPE	364.76
00H30200C	REFLUX PIPE	198.06
00H39300	RAIL	9.60
00H39500C	RAIL REFLUX PIPE	204.46
00H39600C	RAIL REFLUX PIPE	214.06
00H40000C	REFLUX PIPE	156.47
00H40100	TERMINAL	20.56
00H40900C	REFLUX PIPE	575.93
00H44600KT	REPAIR KIT	4799.36
00H45700KT	OVERHAUL KIT, TURBO	803.38
00H47100KT	GASKET KIT, TURBO	512.98
00H49500KT	INJECTOR PARTS KIT	73.90
00H53802	PRESSURE TRANSDUCER	1159.85
00H53803	PRESSURE TRANSDUCER	1159.85
00H53902	PRESSURE TRANSDUCER	1239.84
00H54702	GASKET EXHAUST MANIFOLD	98.01
00H72500	SEA WATER PIPE TRANSMITTER PRESSURE	162.50
00H72700	FLEXIBLE PIPE	45.80
00H72800	FLEXIBLE PIPE	29.60
00H74800C	RH DELIVERY INJECTION PIPE	1889.75
00H74900C	FUEL HP PIPING	2054.08
00H75500C	LH DELIVERY INJECTION PIPE	1971.91
00H78500AM	INJECTOR EXTRACTOR	4674.16
00H86800KT	WATER PUMP	3599.53
00H88700C	J/W PIPE OUTLET	292.14
00H88701C	J/W PIPE OUTLET	242.06
00H88800	RUBBER COUPLING	81.19
00I10300	ABB RR131 TURBO GASKET	87.64
00I27500AM	CYL COMPRESSION TEST TOOL	1766.16
00I45500	ANODE PLUG	91.82
00I51200	ZINC ANODE	57.39
00I60500	TAPPET GUIDE PIN	81.38
00I62201	CLAMPING PLATE OIL COOLER	839.89
00I62500	OIL COOLER	5661.25
00I63000M91	OIL COOLER MODIFICATION	26882.32
00I63100M91	OIL FILTER MODIFICATION	22708.96
00I63200M91	FRONT COVER MODIFICATION	8102.20
00I63300M91	JACKET WATER PIPING MODIFICATION	7058.86
00I68200	AIR COOLER	28680.37
00I76500	OIL EXCHANGER	2282.30
00I79000	OIL COOLER ASSY COMPLETE	3573.63
00I80000M91	SHORTBLOCK MV1712T3FIO2	344302.20
00J70500C	FUEL FEED PUMP COMPLETE	7277.30
0501-212-459	OIL FILTER	154.77
05-702-75	HERION VALVE	20.05
11178L001	POPPET VALVE	911.45
11268L001	ORING	4.70
11462L001	ORING COVER	29.74
140000008A01	GAUGE NOZZLE	283.44
143L001	ORING	8.26
15404-1-7	HEATER,FLUID,INDUST	4805.15
166001438A01	GAUGING BROACH	10110.66
185000001A01	LINER EXTRACTOR	6080.94
185000002A01	CYLINDER LAPPER	5999.20
185000003A01	INSTALLER FOR VALVE CONE	4815.37
185000004A01	INSTALLER FOR GUIDE VL.	3822.39
185000005A01	INSTALLER FOR NOZZLE SEAT	3206.54
185000006A01	INSTLR FOR BRDG PIECE PIN	3594.05
185000007A01	INSTLR V GDE OSL RING	1157.65
185000009A01	EXTR FOR CSHAFT BSHG	3039.71
185000010A01	EXT FLYWHL LOCKING SCR WR	1045.48
185000011A01	INSTALLER BUSHING CRANKSHAFT	623.35
185000012A01	INSTLR REAR CSHAFT BSHG	623.35
185000013A01	INSTALLER FRONT COVER	2618.07
185000014A01	INSTALLER REAR COVER	4347.25

- Price and part number listed are valid for the North America market only
 - Price and part number listed may be changed without notice
 - Notwithstanding, the only binding price and part number are those identified in FMSNA Inc.'s official offer
 - Parts listed may be subject to U.S. export controls and subject to licensing if exported outside of the U.S.

May 2018 Diesel Engine Parts List

185000015A01	INSTLR CRKSHFT OIL SE RG	5020.07
185000016A01	INSTLR CSHAFT OSL RING	5651.42
185000017A01	INSTLR FOR BRG RIV 6308	964.70
185000018A01	RING NUT WRENCH	1198.60
185000019A01	INSTLR FOR BRG RIV NF 307	1280.75
185000020A01	SPECIAL WR FOR 25N64-17	2260.57
185000022A01	INSTLR FOR SEAL 30/50/7	464.55
185000023A01	PSTN INSTALLING RING FXTR	3004.82
185000023A02	BAND FOR INSTALLING PISTONS	3004.82
185000024A01	CONROD-CAP ALIGN TOOL	1104.20
185000025A01	EXTRACTOR FOR WP IMPELLER	2817.02
185000026A01	FLYWHEEL PIN GUIDE (SET OF 2)	399.95
185000027A01	INSTALLER FOR RING 71977 F01	1272.00
185000028A01	INSTLR FOR O-RING 2240/7	1118.12
185000029A01	INSTLR W P BRG RIV NU2205	1372.00
185000030A01	INSTLR FOR BRG RIV 7205	1118.12
185000031A01	FIXTURE, CLAMPING RINGNUT	1359.82
185000032A01	INSTLR FOR BRG RIV 6206	1119.86
185000034A01	WRENCH, OIL PLUG	3347.38
185000035A01	PULLER FR PLANETARY GEAR	744.25
185000036A01	INSTALLER CMSHFT BUSHING	5086.28
185000037A01	CLAMPING FXTR CMSHAFTBSHG	1871.49
185000038A01	TOOL GAUGE PISTON CLR PIPE	1531.97
185000039A01	KIT, WRENCH DINAMETRIC	3314.60
185000041A01	WRENCH RING NUT SPECIAL	295.61
185000042A01	TOOL FOR FITTING PSTN TO CONROD	6900.50
185000044A01	EXTR INJECTOR HSG TUBE	4014.68
185000045A01	EXTRACTOR TO REMOVE VALVE SEAT	4914.14
185000046A01	ENGINE HOISTING ASSY	37490.68
185000047A01	KIT FOR VALVE SEAT REMOVAL	3303.91
185000048A01	DIESEL ENGINE TESTER	10781.18
185000049A01	LAPPER, CYLINDER HEAD VALVE	182.58
185000051A01	GRADUATED DISC	1621.52
185000052A01	MAIN BEARINGS ALIGN GAUGE	18721.90
185000053A01	GAUGE, VALVE HEAD POSITION	302.56
185000054A01	PLR TO REMOVE PRTN RINGS	622.53
185000055A01	HUNGER APPARATUS VD	41888.36
185000056A01	INSTLR HELI-COIL KIT	1020.49
185000057A01	EXTR DR SFT COPLG INJ PMP	1199.84
185000058A01	EXTR TO REMOVE CMSHAFT PN	1157.69
185000059A01	ADPTR FOR CPRSM TEST	2997.17
185000060A01	RECORDING CYL CPRSM TSTR	6289.79
185000061A01	INSTALLER FOR OSL 30/47/6	391.20
185000064A01	COMPARATOR HOLDER	908.31
185000065A01	MICROMETER 0-25MM	551.52
185000066A01	MICROMETER 25-50MM W/CASE	675.64
185000067A01	MICROMETER 50-75MM	784.24
185000068A01	MICROMETER 100-125MM	1133.92
185000069A01	MICROMETER	1175.48
185000071A01	0-16 PSIG GAUGE (PRESSURE) 2.5" DIAL	279.01
185000072A01	BORE GAUGE FROM 25 TO 50	7637.25
185000073A01	BORE GAUGE FROM 50 TO 300	10996.80
185000074A01	MICROMETERS STAND	858.80
185000077A01	INSTALLER FOR MIM 50/65/8	570.20
185000078A01	INSTLR FOR BRG 32X75X20	961.74
185000079A01	PLIERS FOR RING, SNAP	597.00
185000083A01	MALE HEX DRIVEN 14MM FEMALE	2060.60
185000084A01	WRENCH, 41MM 3/4 IN DRIVE	1199.84
185000085A01	HAND GRINDER SK 2Z ASSY	6669.12
185000086A01	COMPOUND, VALVE LAPPING	358.21
185000087A01	BOSCH WRENCH FOR INJ.P	623.35
185000093A01	MICROMETER 150 To 175 MM	4701.85
185000094A01	MICROMETER 175 TO 200 MM	3480.08
185000095A01	HOLDER COMPARATOR	891.18
185000096A01	BEARING CAP EXTRACTOR	5548.18

- Price and part number listed are valid for the North America market only
 - Price and part number listed may be changed without notice
 - Notwithstanding, the only binding price and part number are those identified in FMSNA Inc.'s official offer
 - Parts listed may be subject to U.S. export controls and subject to licensing if exported outside of the U.S.

May 2018 Diesel Engine Parts List

185000100A01	METRIC DIAL INDICATOR	1480.61
185000101A01	PLIERS, SNAP RING 28 UNI 7435	180.85
185000102A01	PLIERS, SNAP RING 68 UNI 7437	180.85
185000106A91	KIT, GUIDE VALVES INSTALLER	13265.63
185000115A01	INSTALLER, CAMSHAFT BUSHING	11737.58
185000116A01	MAIN BEARINGS ALIGN GAUGE	23909.87
185000117A91	INJECTOR NOZZLE TEST EQPT	3345.66
185000123A01	WRENCH, EXTENSION 3/4 IN DRIVE	211.28
185000147A91	TOOL-BORING SEAT OF HSG	5442.76
185000150A01	19 MM ALLEN WRENCH L SHAP	38.83
185000152A01	HANDLE, WRENCH EXTENSION	99.21
185000224A01	INSTALLER FOR WP IMPELLER	439.94
185000225A01	EXTRACTOR FOR WP IMPELLER	2499.66
185000348A01	TOOL TO REMOVE GEAR (WATER PUMP)	3919.38
185000349A01	TOOL TO REMOVE COVER AND CAMSHAFT (WATER)	2428.48
185000350A01	TOOL TO REMOVE IMPELLER (WATER PUMP)	2821.96
185000351A01	TOOL TO REMOVE VALVE SEAL (WATER PUMP)	698.31
185000352A01	TOOL TO REMOVE OIL RETAINER (WATER PUMP)	1959.71
185000353A01	TOOL TO FIT OIL RETAINER (WATER PUMP)	730.82
185000354A01	TOOL TO FIT CAMSHAFT (WATER PUMP)	2231.19
185000355A01	TOOL TO FIT VALVE SEAL (WATER PUMP)	2402.79
185000356A01	TOOL TO CLOSE PISTON RINGS	2964.57
185000357A01	PISTON RING EXTRACTOR	3253.09
185000358A01	TOOL TO FIT/REMOVE CAMSHAFT	2120.59
185000359A01	TOOL TO EXTRACT PSITON FROM LINER	5679.08
185000360A01	TOOL TO FIT/REMOVE HEAD VALVES	2670.40
185000361A01	TOOL TO REMOVE INJECTOR AND COPPER BUSH	4523.94
185000362A01	TOOL TO WORK VALVE SEATS	4365.18
185000364A01	TOOL TO REMOVE VALVE SEATS	5008.27
185000365A01	TOOL TO REMOVE LINER	4241.16
185000366A01	TOOL TO FIT LINER	3534.30
185000367A01	TOOL TO GRID SEAT LINER SEAL	5445.86
185000368A01	TOOL TO GRIND LINER SEAT ON ENGINE BLOCK	5362.09
185000369A01	TOOL TO PRESS WATER MANIFOLD	6525.42
185000370A01	TOOL TO CLEAN WATER MANIFOLD	4241.16
185000374A01	PRESSURE MEASUREMENT DEVICE	608.30
185000375A01	CONROD CLEARANCE MEASUREMENT DEVICE	403.90
185000376A01	HEAD FITTING PIN	307.16
185000377A01	V1300 TORQUE WRENCH SET	3047.60
185000536A01	BUSH EXTRACTOR	2930.05
185000538A01	OIL/FUEL FILTER EXTRACTOR	600.48
185000540A01	ENGINE SUPPORTS	8451.05
185000541A01	TOOLS FOR TENSION GAUGE	2717.03
185061308A01	CAMSHAFT FOR TRUING FRONT COVER	704.48
185078663A02	PAD FOR REAL OIL RETAINER FITTING	1423.38
185312149A01	PAD FOR ASSEMBLY COMPLETE OIL RETAINER	1457.04
185315334A01	PIN FOR OIL PAN FITTING	125.45
185315599A01	INSTALLATION RING FOR PISTON 1300 H	1507.00
1901D36	OIL PUMP AND DRIVE	12823.22
190600-12C	#12 STAINLESS STEEL REUSABLE FITTING	240.60
1919L001	ORING	29.74
1P340016	SPECIAL WASHER	22.44
1P340093	PLUG	33.04
1P340117	AIR FILTER 1"GAS	707.74
1P340265	SEAL RING	16.78
1P340750LA	PISTON RINGS	517.03
1P340768	PLUG	37.36
1P340805	TURBOCHARGER PLATE	14.25
1P340957	CLAMP	58.43
1P340964	WATER LEVEL GAUGE WITH CONTACT	1023.90
1P341155	O-RING	19.62
1P341162	THREADED HOSE GC1 UNI339	54.97
1P341270	MPU - MAGNETIC PICK UP	179.89
1P341434	SHORT BLOCK	505038.13
1P341434KIT	ID 36 MANDATORY OVERHAUL PARTS	73640.14

- Price and part number listed are valid for the North America market only
 - Price and part number listed may be changed without notice
 - Notwithstanding, the only binding price and part number are those identified in FMSNA Inc.'s official offer
 - Parts listed may be subject to U.S. export controls and subject to licensing if exported outside of the U.S.

May 2018 Diesel Engine Parts List

1P341528LA	EXIT REFLUX PIPE	90.80
1P341869	RING FOR CONNECTION EXHAUST MANIFOLD	15.04
1P341909LA	CONNECTING PIPE	99.91
1P342031	LINER O-RING	69.56
1P342061	SCREW M10 X 95	7.06
1P342067	BRACKET	56.34
1P342207	THREADED PIN	75.59
1P342210	ACTUATOR LEVER	731.21
1P342543	90 DEG.ELBOW	266.50
1P342599	FLUID PASSEGE BOLT	37.78
1P342807	HOLLOW SCREW	257.36
1P343140	BUSH FOR OIL FILTER BODY	6.94
1P343320LA	INJECTOR SHIMS	33.11
1P343322	O-RING 17F12	45.22
1P343323	IMPELLER	1734.48
1P343324	MECHANIC SEAL (FIXED+WHEEL) 30F12	255.27
1P343325	OIL SEAL RING 32F12	79.99
1P343326	IMPELLER-SIDE BEARING	391.25
1P343327	WEAR RING 28F12	193.44
1P343328	WOODRUFF KEY 6X6X30 UNI 6604 35F12	25.19
1P343329	CONNECTION-SIDE BEARING	599.92
1P343330	WEAR RING 29F12	180.48
1P343331	OIL SEAL RING 28J11	56.69
1P343334	PUMP MBM 40/CV	3356.95
1P343336	COUPLING	775.55
1P343548LA	SHEET RUBBER	30.95
1P343573	B & C SPEED SENSOR	595.42
1P343710	SEAL,PLAIN ENCASED	1229.41
1P343716	SCREW FOR FUEL INJECTOR SPILL	18.00
1P343830	SHOCK ABSORBER	11.02
1P344587	GASKET FOR WATER COOLER COVER	34.09
1P344613	CLAMP	118.33
1P344614	SHIM	187.79
1P344616	SHIM	187.79
1P344630	WATER VALVE	1012.91
1P344634	RUBBER HOSE	170.73
1P344640	BRACKET	56.52
1P344652	CLAMP	59.13
1P344654	CLAMP	83.47
1P344660	CPU DC2 RODRIQUEZ	4947.17
1P344688	ROLLER BEARING	239.90
1P344786	SENSOR, ENGINE OIL PRESSURE	65.54
1P344787	TEMPERATURE, TRANSMITTER. VDO-D 120°C	73.75
1P344960	JUNCTION WATER/FUEL FILTER	145.98
1P345000	SHIM	99.99
1P345045	FUEL PIPE	383.95
1P345098	LOCKING PLATE	5.09
1P345132	THERMOSTAT 95C TO 100C	1765.77
1P345159	MOT.90S4/MM 60HZ ANTISHOCK	10416.02
1P345176LA	INJECT. PIPE 4-RIGHT 1-LEFT	888.28
1P345232	UNION 1/8"G	44.81
1P345275	EXHAUST GASKET	66.78
1P345423	SPACER	21.60
1P345503LA	BLOW BY EXHAUST PIPE	134.76
1P345506	HOSE D.32-L102	52.17
1P345518	VALVE CHECK	187.81
1P345524	SLEEVE AIR PIPE	104.99
1P345545	3-WAY UNION	18.26
1P345571	UNJION M20X1.5-1/4 NPT	185.19
1P345592	FILTER ELEMENT,FLUI	499.07
1P345631	NOZZLE-HOLDER	278.91
1P345636	PIPE D.6 TEFLON	993.30
1P345638	PLUG	92.47
1P345668	PIPE COUPLING DI32-L80	90.43
1P345738LA	BOSCH COMPLETE INJECTOR	1332.84

- Price and part number listed are valid for the North America market only
 - Price and part number listed may be changed without notice
 - Notwithstanding, the only binding price and part number are those identified in FMSNA Inc.'s official offer
 - Parts listed may be subject to U.S. export controls and subject to licensing if exported outside of the U.S.

May 2018 Diesel Engine Parts List

1P345774	HELICOFLEX GASKET	1191.15
1P346026	SEPAR FILTER CARTRIDGE	84.51
1P346044LA	REAR TIMING COVER	1718.03
1P346045LA	FUEL PUMP SUPPORT	1695.42
1P346047LA	CENTRAL COVER	282.57
1P346158	BRACKET FOR PIPE DIAM. 15	75.40
1P346194	FLANGE	306.05
1P346241	WATER TANK PLUG	91.29
1P346282	GASKET, EXHAUST GAS DN150	60.00
1P346404	VALVE GASKET	17.39
1P346439	BRACKET	78.25
1P346703LA	BULKHEAD UNION ASSY	63.47
1P346762	BRACKET	195.63
1P346932	CHECK VALVE G1"	204.75
1P346956	GASKET FOR THERMOSTATIC VALVE SEATING	10.92
1P346962LA	THERMOSTATIC VALVE ASSY	333.87
1P347230	BUSHING	160.29
1P347386	OIL PIPE TO GOVERNOR	278.22
1P347561	SEAL RING	31.47
1P347615	HANDLE	6.86
1P347641	GASKET LRC 123/16 A+P	10.86
1P347718	SWITCH, LEVEL GENTECH LS803-32	369.95
1P347763	LOCK PLATE	17.39
1P347777	GASKET	40.43
1P347778	GASKET	32.50
1P347800	WASTE-GATE GASKET	28.17
1P347876LA	LEFT RISER WITH BUSHING	2252.31
1P348264	THERMOSTAT	69.03
1P348318LA	CYL. HEAD, COMPLETE WITH DEPERMING	18717.51
1P348548	DIGITAL CONTROLLED SPEED GOVERNOR	9496.59
1P348599	ZINC ANODE	29.57
1P348609LA	COMPLETE SDDG CRANKSHAFT	83942.89
1P348611LA	CONROD ASSY	2857.05
1P348649	BARRING TOOL	183.30
1P348706	STARTING MOTOR PINION	1898.88
1P348804LA	BRACKET	89.05
1P348883	LCS ELASTIC COUPLING PLUG	275.97
1P348914	RESILIENT ORMANT	9.39
1P348919	RING, SPACER	1088.55
1P349010	THERMOSTAT VDO 64±3°C	606.89
1P349011	THERMOSTAT VDO 96±3°C	282.25
1P349012	THERMOSTAT VDO 105±3°C	284.45
1P349023	AUTOMATIC VOLTAGE REGULATOR	12641.80
1P349034	FLANGE	644.53
1P349035	EXHAUST GASKET	26.45
1P349073	RAPID UNION	177.37
1P349074	DUST CUP	50.43
1P349081	PIN	20.48
1P349117	MICROSWITCH BRACKET	46.08
1P349202	HEATER 3 KW - 440 3ac - 60 Hz	3312.67
1P349203	ELECTRIC PUMP 440 3ac- 60Hz	655.57
1P349485	PLATE FOR OIL INLET FLANGE	49.03
1P349528	NIPPLE 1"	62.60
1P349591	MANIFOLD 1S 340858 COVER	1047.87
1P349623	BRACKET	47.82
1P349706	UNION 3/8"G- M12X1.5	52.17
1P349920LA	"SDDG" TOOL BOX	2002.27
1P349983LA	NOZZLE, FUEL INJECTION	50.78
1P349985	VALVE 1/8"	250.28
1P350003	EXTRACTOR, FUSEHOLDER	92.14
1P350030	REDUCTION DN 65	115.77
1P350118	PROTECTION	141.29
1P350486	OIL PIPE ORING	319.96
1P350592	PLUG	54.78
1P350593	ELECTROLYTIC ANODE	66.08

- Price and part number listed are valid for the North America market only
 - Price and part number listed may be changed without notice
 - Notwithstanding, the only binding price and part number are those identified in FMSNA Inc.'s official offer
 - Parts listed may be subject to U.S. export controls and subject to licensing if exported outside of the U.S.

May 2018 Diesel Engine Parts List

1P350603	ZINC ANODE	50.83
1P350900	ADAPTOR	75.94
1P351040	SERVOVALVE	1733.68
1P351195	SAFETY VALVE	257.40
1P351209	SPECIAL PLUG	23.01
1P351221	ADAPTOR 3/8-24 UNF-2A -1/8" G	129.55
1P351275	SCREW M8	87.81
1P351276	DOWEL PIN	62.60
1P351299	FILLED COUPLING 1" GAS	73.90
1P351532	LIP SEAL	37.40
1P351551	SEAL RING	58.26
1P351650	SENSOR	170.98
1P351655LA	FLEXIBLE SUPPORT	48.00
1P351656	BUSHING FLEXIBLE SUPPORT	25.04
1P351695	BUSHING	136.58
1P351696	BUSHING	136.51
1P351833	CLAMP	172.15
1P351834	SHIM	460.81
1P351886LAE00	OIL PRESS, VALVE	819.50
1P351917	UNION 45 DEGREE	77.47
1P351918	ADAPTOR ELBOW	49.18
1P351978	VALVE, NON-RETURN 0.35 BAR	339.96
1P352030B	EXH.MANIFOLD	1632.83
1P352031B	EXH.MANIFOLD	1384.16
1P352032B	EXH.MANIFOLD	1862.36
1P593615	SLEEVE	217.98
1P593667	WEIGHT, COUNTERBALANCE	6687.95
1P593671	PLUG, INSPECTION	468.40
1P598914	PISTON ASSY	1234.76
1P605050	SPACER	52.02
1P605080	SPACER REAR	66.08
1P605085	SPACER FRONT	38.80
1P605174	TURBOCHARGER FLANGE GASKET	156.22
1P605796	GASKET	17.20
1P605797	FLEXIBLE HOSE	68.76
1P605799	PIPE CROSS RING	19.13
1P606010	AIR FILTER	7153.06
1P606103	SEAL SEGMENT	589.93
1P606193	LAMELLAR SEGMENT	44.79
1P606822	GASKET	8.00
1P606829	GASKET	8.00
1P606928	GASKET	6.00
1P606931	GASKET	6.00
1P607067	SEAL RING	75.59
1P607472	SETSCREW M6	19.99
1P607772	PRESSURE SWITCH	503.10
1P608235	HOLLOW BOLT	21.37
1P608642	INTERCOOLER SLEEVE	147.98
1P608768	GASKET	21.74
1P608769	GASKET	10.96
1P608770	LOWER GASKET	15.48
1P608771	TURNBUCKLE BARREL	26.40
1P608772	BELLOWS, PROTECTION	306.33
1P608843A	DOUBLE DRILLED SCREW	7.55
1P609021	GASKET	7.96
1P609437	GEAR PIN	623.92
1P609438	WASHER	260.84
1P609830LA	COMPRESSION RING SERIES	2237.81
1P610445	SPACER OR INJECTOR	13.29
1P611372LA	GASKET KIT FOR INLET MANIFOLD	401.53
1P611460	INJECTION PIPE CYLINDER 1	965.36
1P611461	INJECTION PIPE CYLINDER 2	965.36
1P611462	INJECTION PIPE CYLINDER 3	965.36
1P611463	INJECTION PIPE CYLINDER 4	965.36
1P611464	INJECTION PIPE CYLINDER 5	965.36

- Price and part number listed are valid for the North America market only
 - Price and part number listed may be changed without notice
 - Notwithstanding, the only binding price and part number are those identified in FMSNA Inc.'s official offer
 - Parts listed may be subject to U.S. export controls and subject to licensing if exported outside of the U.S.

May 2018 Diesel Engine Parts List

1P611465	INJECTION PIPE CYLINDER 6	965.36
1P611466	INJECTION PIPE CYLINDER 7	965.36
1P611467	INJECTION PIPE CYLINDER 8	965.36
1P611468	INJECTION PIPE CYLINDER 9	965.36
1P611469	INJECTION PIPE CYLINDER 10	965.36
1P611470	INJECTION PIPE CYLINDER 11	965.36
1P611471	INJECTION PIPE CYLINDER 12	965.36
1P611477	O SEAL	0.93
1P611478	O SEAL	20.90
1P611479	DOWTY WASHER	114.98
1P611969	ADAPTOR M-F	29.63
1P611992	COUPLING	1306.79
1P611993	COUPLING	1306.79
1P612043	FITTING	25.21
1P612341	TIE-ROD L=154	142.59
1P700191	GASKET	33.21
1P700193	GASKET	64.51
1P700195	GASKET	47.92
1P700353	CONNECTOR	112.28
1P700354	CLAMP	62.20
1P700402	COMPRESSION RING	195.13
1P700661	CONNECTOR	190.38
1P701825	SHIM KIT	17.39
1P701847	DISTANCE PIECE-WATER HEAT	185.71
1P701848	O-RING	42.60
1P702303A	FLARED TUBE FITTINGS	88.17
1P702367	WASHER, COPPER	67.68
1P702368	BALL BEARING 75-35-20	320.00
1P702904	SPACER	243.45
1P703220	TIMER FIBER E21F33	287.96
1P703221	TIMER FIBER E21F37	763.72
1P703765	FAN HUB MACHINING-153972	7059.50
1P703778	RING-153990	18577.64
1P703799	S.STEEL PLAIN WASHER-154623	8.67
1P703800	S.STEEL NUT M8-154624	8.67
1P703801	S.STEEL SCREW M8X30-154625	26.01
1P703820	S.STEEL SPRING WASHER-155876	8.67
1P703828	S.STEEL SPRING WASHER-156328	8.67
1P703829	S.STEEL NUT M5-156329	8.67
1P703852	WASHER-160129	8.67
1P703861	INSPECTION PLUG-160225	520.17
1P703862	S.STEEL SCREW M16X40-160570	43.35
1P703863	S.STEEL SPRING WASHER-160571	13.00
1P703867	S.STEEL SPRING WASHER-160766	8.67
1P703868	S.STEEL SCREW M12X35-160824	60.69
1P703871	S.STEEL NUT M16-160870	8.67
1P703872	S.STEEL PLAIN WASHER-160871	8.67
1P703875	BRASS GREASE NIPPLE-161205	264.75
1P703989	SCREW M5X10-100230	43.35
1P704426	KIT ENGINE GASKETS	2356.22
1P704427	KIT SEAL RING	1724.65
1P705016	RING, SEAL	33.04
1Q340082LA	PISTON ASSEMBLY	4586.87
1Q340173LA	PISTON COOLING OIL PIPE	472.98
1Q340297	FLANGE	201.71
1Q340622	GASKET	50.43
1Q340749	OIL SCRAPER RING	195.13
1Q340804	FUEL BLOCK	396.18
1Q340884	TURBOCHARGER GASKET	52.86
1Q341049LA	ROCKER ARM PEDESTAL ASSY	139.11
1Q341126	PNEUMATIC STARTER MOTOR	14702.14
1Q341127	PRESSURE REDUCER	2775.28
1Q341128	PRESSURE REDUCER	1077.56
1Q341129	AIR STARTING	1324.53
1Q341131	START PUSH BUTTON	502.55

- Price and part number listed are valid for the North America market only
 - Price and part number listed may be changed without notice
 - Notwithstanding, the only binding price and part number are those identified in FMSNA Inc.'s official offer
 - Parts listed may be subject to U.S. export controls and subject to licensing if exported outside of the U.S.

May 2018 Diesel Engine Parts List

1Q341158	PRESSURE GAUGE	883.02
1Q341161	CLAMP	130.42
1Q341178	BRACKET	52.17
1Q341179	COVER BRACKET	93.90
1Q341181	PIPE BRACKET	30.43
1Q341277	INTERC-HEAD GASKET	27.87
1Q341460	SHEATH	253.97
1Q341527LA	CONNECTION PIPE BLOCK	75.71
1Q341529	BACKFLOW FUEL BLOCK	376.03
1Q341558	FUEL RECOVERY BLOCK	534.30
1Q341630LA	DISCHARGED OIL PIPE I. PUMP HOUSING	102.60
1Q341706LA	EXIT PUMP PIPE	171.11
1Q341987LA	UPPER BOX	3699.51
1Q341989LA	LOWER BOX	2299.70
1Q341991	VALVE GUIDE	191.97
1Q341992	FLANGE	354.74
1Q341993	COVER	699.91
1Q342076	WATER MANIFOLD	1655.78
1Q342248LA	COMPLETE PISTON	6884.20
1Q342528LA	ROLLER TAPPET	751.21
1Q342612	AIR SHUTDOWN VALVE	7495.53
1Q342826	OIL PRESS. VALVE	440.22
1Q342864	VALVE	1701.78
1Q343421	AIR FILTER	106.07
1Q343422	5 WAYS ELECTRIC-VALVE	344.30
1Q343669LA	OIL FLEXIBLE PIPE	709.80
1Q343672LA	OIL VALVE	1329.46
1Q343708	FUEL BLOCK SUPPORT	218.64
1Q343714	TACHOMETER RELAY	3274.59
1Q344600	LH AIR MANIFOLD	628.61
1Q344602	FLANGE	706.86
1Q344605	FLANGE	456.46
1Q344606	RH AIR MANIFOLD	628.61
1Q344607LA	AIR PIPE	143.46
1Q344618	BRACKET	278.23
1Q344625LA	COOLER WATER PIPE LF-SIDE	457.33
1Q344626LA	COOLER WATER PIPE RH-SIDE	457.33
1Q344646LD	ANTISHOCK PRELUBE. E/P	27194.66
1Q344680	SPACER FOR OR DIAM 88.49X3.53-4	285.18
1Q344690	COVER	386.91
1Q344907LA	LH COVER H2O INLET PIPE	121.03
1Q344908LA	RH COVER H2O INLET PIPE	121.03
1Q344932	CLAMPING PLATE	113.03
1Q345029	SWITCH,SENSITIVE	312.03
1Q345161	MICROSWITCH	308.83
1Q345174C	THERMOCOUPLE	1137.24
1Q345202LA	LH COVER H2O OUTLET PIPE	101.20
1Q345321LA	RH COVER H2O OUTLET PIPE	121.03
1Q345504LA	BLOW-BY INLET PIPE	200.00
1Q345516	FLANGE	164.33
1Q345525	AIR PIPE	111.29
1Q345550	BRACKET	84.34
1Q345576	5-WAY ELECTROVALVE SUPPORT	73.03
1Q345597	POINTER	86.95
1Q345598	POINTER COVER	43.47
1Q345634	FILTER-SEPARATOR,LI	2771.60
1Q345670	BLOW BY LF PIPE BRACKET	165.20
1Q345728	SPACER	59.12
1Q345734	BRACKET	76.51
1Q346008LA	LF AIR TURBO PIPE	1361.52
1Q346009LA	RH AIR TURBO PIPE	1361.52
1Q346022LA	COMPLETE COOLER SHEATH	2211.88
1Q346132	TRANSM.4-20MA 0-4BAR DANFOSS	1794.55
1Q346133	TRANSM.4-20MA 0-6BAR DANFOSS	1145.94
1Q346195LA	PLUG ASSY	161.68

- Price and part number listed are valid for the North America market only
 - Price and part number listed may be changed without notice
 - Notwithstanding, the only binding price and part number are those identified in FMSNA Inc.'s official offer
 - Parts listed may be subject to U.S. export controls and subject to licensing if exported outside of the U.S.

May 2018 Diesel Engine Parts List

1Q346224LA	VALVE ASSY	409.63
1Q346232	VALVE,SAFETY RELIEF	8914.27
1Q346440	UNION JIC7/8-14 UNF	181.72
1Q346441	EXPANSION JOINT	1853.67
1Q346594LA	OIL SYSTEM	481.68
1Q346694LA	OVERSPEED LUBRICATION PIPE	170.98
1Q346697	COVER EXHAUST MANIFOLD	277.84
1Q346966LA	THERMOSTATIC BOX ASSY	3589.12
1Q346975	OIL FLEXIBLE PIPE	1479.81
1Q347020LA	CLAMP, ASSEMBLY	487.05
1Q347098	BUSHING FOR WATER EXPANS. TANK LEVEL SW	185.19
1Q347309	PIPE	99.59
1Q347396	FLEX AIR TUBE DN6 L700	319.96
1Q347412LA	PUSH ROD	79.38
1Q347614	RESILIENT MOUNT	5397.29
1Q347706	FUEL FLEXIBLE PIPING	487.73
1Q347733	PRESSURE SWITCH BRACKET	114.77
1Q347776	GASKET MANIFOLD COVER	13.39
1Q347836	GASKET - HEINZMAN	40.43
1Q347888	AIR HOSE D.82.5-L70	239.09
1Q347923LA	WATER PUMP INLET ASSY	3415.96
1Q347936	OIL TURBO EXHAUST STUB	185.19
1Q348080LA	CRANKCASE COMPLETE V1312 4V HPCR ABS	57093.91
1Q348351	RESIL. DMR-T35-HA/S 45SH	2564.88
1Q348560	GUIDE VALVE	46.22
1Q348600	FUEL COOLER BRACKET	126.07
1Q348601	FUEL COOLER SUPPORT	126.07
1Q348608LA	VALVE	1733.68
1Q348614LA	SEA WATER EXCHANGER STUB	1206.80
1Q348664	GUARNIZIONE DI SCARICO TURBINA KKK K36.5	109.19
1Q348675	TURBOCHARGER	51509.18
1Q348770	BLOCK 1/2 GAS	222.61
1Q348796	VALVE DANFOSS SERIES MBV 2000	187.01
1Q348797 B	PRESS 0.2 BAR MBC 5100 1211 1DB04 DANFOSS	1008.56
1Q348797 G	PRESS. 2BAR MBC5100 1211 1DB04 DANFOSS	1321.84
1Q348797 I	PRESS 3.2 BAR MBC5100 1411 1DB04 DANFOSS	942.48
1Q348797 K	PRESS 3.4 BAR MBC5100 1411 1DB04 DANFOSS	968.57
1Q348797 L	PRESS 6 BAR MBC5100 1411 1DB04 DANFOSS	1003.35
1Q348797 Q	PRESS 0.05BAR MBC5100 1011 1DB04 DANFOSS	1070.64
1Q348797 R	PRESS 6 BAR MBC 5100 1411 1DB04 DANFOSS	968.57
1Q348798	PRESS. TEST VALVE MBV 5000-1111 DANFOSS	674.70
1Q348800 A	TERM.TO 45* MBC8100 1411 1A00075 DANFOSS	1732.87
1Q348800 B	TERM. TO 55* MBC8100 1411 1A00075 DANFOSS	1774.15
1Q348800 F	TEMPERATURE SWITCH 70C to 120C	368.74
1Q348800 H	TERM. TO 110* MBC8100 2411 1A00075 DANFOSS	1774.15
1Q348801	TRAS. PRESS. 0-40bar MBS-3100-2611-6AB08	890.50
1Q348802	TRANSMITTER,TEMPERATURE	532.22
1Q348825	OIL LEVEL INDICATOR	2152.76
1Q348879	HOSE ASSEMBLY	2505.87
1Q348895LA	SEA WATER PIPE	3752.08
1Q348972	SPEED GOVRNOR ACTUATOR	18249.76
1Q349020	AXIAL DISCHARGE MANIFOLD	9518.74
1Q349024	VDO 0-10 bar M14x1.5 TRANSMITTER	446.55
1Q349057	ELASTIC COUPLING PROTECTION	1449.81
1Q349058LA	DANFOSS APPLICATION	1675.43
1Q349059	THERMAL INSULATION	626.00
1Q349069	MICROSWITCH OMRON D4BS-15FS	222.98
1Q349116LA	BARRING DEVICE PROTECTION ASSY	478.20
1Q349121LA	PREHEATING UNIT	24156.65
1Q349159	SENSOR BLOCK 1/2 G	169.54
1Q349169LA	SUPPLY PIPE LF	539.07
1Q349185LA	RH COVER WATER PIPE INLET	126.07
1Q349186LA	LF COVER WATER PIPE INLET	134.77
1Q349225LA	BREATHER PIPE	134.76
1Q349226LA	BREATHER PIPE	101.73

- Price and part number listed are valid for the North America market only
 - Price and part number listed may be changed without notice
 - Notwithstanding, the only binding price and part number are those identified in FMSNA Inc.'s official offer
 - Parts listed may be subject to U.S. export controls and subject to licensing if exported outside of the U.S.

May 2018 Diesel Engine Parts List

1Q349251	MANIFOLD FOR OIL SENSORS	218.17
1Q349296	PROTECTION SPACER	99.99
1Q349315	OIL BLOCK	805.77
1Q349604	OIL COOLER	6651.29
1Q349622	BRACKET FOR PLATE	130.42
1Q349643LA	COMPLETE OIL FILTER SUPPORT	1841.50
1Q349794	FUEL VALVE "SEITZ" TYPE 339	6395.68
1Q349796	3-WAY VALVE	1766.68
1Q349841LA	BELT STRETCHER FOR WATER PUMP	1767.52
1Q349867	AIR BLOCK	586.88
1Q349890 C	TRAS. PRESS. 0-10bar MBS-3100-2011-6BB04	1027.71
1Q349890 E	PRESSURE TRANSMITTER 0-25 BAR	1171.05
1Q349890 F	TRANS. PRESS. 0-40BAR MBS-3100-2611-6BB04	1136.44
1Q349890B	TRAS. PRESS. 0-6bar MBS-3100-1811-6BB04	1148.30
1Q349910LA	FUEL INLET PIPE	161.80
1Q349917	CLAMP	155.84
1Q349981	ELECTROVALVE SUPPORT	243.45
1Q349988	TRANS. PRESS. 0-6bar MBS-3150-1811-6BB04	1048.56
1Q350005	SHUTDOWN EMERGENCY PLATE	391.25
1Q350019	UNION	115.40
1Q350061LA	CLAMP, INJECTION PIPE 6	382.56
1Q350067LA	PNEUMATIC FITTING ASSY	1374.80
1Q350070LA	COMPLETE CONDUCT	4903.45
1Q350148	VALVE B20/S	740.78
1Q350149	UNION 90	239.09
1Q350153	PUSH ROD	187.80
1Q350193	ENGINE AIR STARTER	15735.92
1Q350200	1st PISTON RING	178.88
1Q350202	2nd PISTON RING	178.88
1Q350203	3rd PISTON RING	178.88
1Q350506LA	FUEL FILTER COMPLETE	423.95
1Q350721	POINTER	334.74
1Q350779	CONNECTING STUB	1138.97
1Q350780LA	FUEL PUMP CONTROL FLANGE	1497.54
1Q350902LA	MAIN BEARING	388.75
1Q350924LA	MAIN BEARING COMPLETE	426.43
1Q350988	BY-PASS PIPE BRACKET	375.60
1Q351031	SERVOVALVE PUSH BUTTON	368.65
1Q351134	ACTUATOR	1349.39
1Q351448	VALVE, SAFETY RELIEF	10682.06
1Q351528	WOODWARD GOVERNOR EGB-2P "REVERSE ACTING	41044.96
1Q351595	OIL COOLER BRACKET	177.37
1Q351614	OIL COOLER WATER INLET GASKET	13.38
1Q351722	SCREW M12	34.78
1Q351763E00	INJECTOR HOLDER	475.14
1Q351772E00	PIN ø58 - V1312HPCR - FASE 3	175.49
1Q351857E00	OIL GASKET	36.29
1Q351976	PLATE	268.66
1Q352050	HOLLOW BOLT	127.29
1Q352090E00	RUBBER GASKET	21.31
1Q352105	SERVOVALVE BRACKET	316.35
1Q352106LA	3-VALVE ASSY	5061.94
1Q352121LA	FUEL PIPE	51.12
1Q352125	EXHAUST MANIFOLD GASKET	31.30
1Q352151	GEAR, DRIVEN	516.45
1Q598976	COVER	285.88
1Q604424	PIPE	89.55
1Q605082	SHAFT	406.91
1Q605084	GEAR	1177.24
1Q605293	EXPANSION JOINT	1587.79
1Q605830	EXPANSION COUPLING	1715.78
1Q605980	AIR FILTER GASKET	24.06
1Q605986	GASKET BETWEEN COUPLING AND RR131 TURBO	114.16
1Q605987	GASKET	97.99
1Q605993	DIPSTICK	117.73

- Price and part number listed are valid for the North America market only
 - Price and part number listed may be changed without notice
 - Notwithstanding, the only binding price and part number are those identified in FMSNA Inc.'s official offer
 - Parts listed may be subject to U.S. export controls and subject to licensing if exported outside of the U.S.

May 2018 Diesel Engine Parts List

1Q606372	GASKET	178.81
1Q606375	PULLEY	902.30
1Q606451	TANK FUEL PIPE BLOCK	273.00
1Q606589	RIGHT BRACKET	123.99
1Q606669	AIRE HOSE CONNECTION	165.58
1Q607798	VISCOUS DAMPER	3942.09
1Q608288LA	METALLIC TUBE	147.81
1Q608776LA	OIL DISCHARGE TUBE	1008.57
1Q608776LB	OIL DISCHARGE TUBE	1008.57
1Q608778LB	OIL DISCHARGE TUBE	172.76
1Q608779LA	OIL DISCHARGE TUBE	146.07
1Q609508	GEAR BUSHING	693.91
1Q609780LA	ASSEMBLY CLAMP	712.40
1Q609849	HEAD COVER GASKET	26.38
1Q610211	EXHAUST SEAT VALVE	102.60
1Q610212	VALVE GUIDE	99.99
1Q610311	MOD. 4621 AMOT VALVE	4212.00
1Q610320	GASKET	51.16
1Q610321	GASKET	50.24
1Q610872LA	FLYWHEEL ASSEMBLY	10465.75
1Q610874LA	FLYWHEEL ASSEMBLY	15391.36
1Q611696LA	TAPPET PORT COVER	271.27
1Q611879LA	AIR FILTER	414.65
1Q611980LA	EXHAUST DRAIN COMPLETE	179.11
1Q612199LA	FUEL PIPE	383.95
1Q700189	GASKET	58.76
1Q700451	SCREW BOLT FOR SECURING CYL HEAD	81.59
1Q700465	NOZZLE	241.29
1Q700497	CONNECTING STUB	694.69
1Q700499	RAW WATER OUTLET FLANGE	819.26
1Q701380	LEVER SUPPORT	453.86
1Q701800	ORIFICE FLANGE	290.30
1Q701806	CONNECTING STUB	110.20
1Q701807	CONNECTING STUB	313.84
1Q701809	CONNECTING STUB	249.21
1Q701813	THERMAL PROTECTION	863.89
1Q702340	PRESSURE SWITCH	1701.78
1Q702906	RAW WATER PUMP DRIVE SHAFT	1071.18
1Q702935	GASKET	43.47
1Q703235	CONNECTING STUB	167.98
1Q703977	GASKET	46.31
1Q704419	ALARM DISCHARGE TANK	1656.30
1Q705058	GASKET	31.11
1R340299LA	OIL TUBE	293.87
1R340742	CAM FOLLOWER	234.23
1R340848LA	DRIVE GEAR ASSY	3080.84
1R341125LA	AIR STARTING	12298.37
1R341400	THERMOSTATIC VALVE	2912.66
1R341689	GASKET	270.02
1R341717LA	REFLUX PIPE LEFT - RIGHT	488.86
1R341739	EXHAUST VALVE	436.46
1R341924LA	REFLUX PIPE LEFT - RIGHT	478.55
1R341984LA	HEAT EXCHANGER ASS.	17085.74
1R342120	COVER	1039.86
1R343180LC	RIGHT HAND EXHAUST MANIFOLD ASSEMBLY	10230.09
1R343181LC	LEFT HAND EXHAUST MANIFOLD ASSEMBLY	8597.12
1R344581	END COVER	845.08
1R344583	BRACKET	875.54
1R344585	INTERCOOLER ELEMENT	11502.83
1R344596LA	BY-PASS PIPE	938.97
1R344598	LF COOLER SUPPORT	3310.00
1R344599	RH COOLER SUPPORT	3310.00
1R344619LA	COOLER WATER PIPE	5242.78
1R344620LA	LF WATER PIPE	4187.27
1R344622LA	RH WATER PIPE	4187.27

- Price and part number listed are valid for the North America market only
 - Price and part number listed may be changed without notice
 - Notwithstanding, the only binding price and part number are those identified in FMSNA Inc.'s official offer
 - Parts listed may be subject to U.S. export controls and subject to licensing if exported outside of the U.S.

May 2018 Diesel Engine Parts List

1R344623LA	LF WATER PIPE	3263.92
1R344689	SHAFT	815.56
1R344691LA	COMPLETE I.P.DRIVE	5842.71
1R344766LA	LF THERMOSTATIC PIPE	578.18
1R344767LA	RH THERMOSTATIC PIPE	611.22
1R344862LA	FUEL PIPE	175.29
1R344940LA	OIL PIPE	506.12
1R344941LA	OIL PIPE	293.87
1R344942LA	PIPE	497.43
1R344943LA	LF OIL PIPE	366.81
1R345050	RH AIR MANIOLD SUPPORT	302.57
1R345051	LF AIR MANIFOLD SUPPORT	193.89
1R345201	ELASTIC MOUNTING	583.67
1R345322	FUEL FILTER SUPPORT	185.19
1R345507	BLOW-BY BRACKET	141.46
1R345531	COMPLETE AIR STARTER SS350GE06R89-031	22335.56
1R345566	MANIFOLD, INLET	769.39
1R345669	RH BLOW-BY BRACKET	149.55
1R345699LA	STOP,MECHANICAL	1183.12
1R345708LA	BLOW BY ASSY	2682.78
1R345765	EXHAUST BELLOWS	5635.85
1R346120LA	FUEL PIPE	273.36
1R346121LA	FUEL PIPE	273.36
1R346706	FUEL COOLER	4622.26
1R347620LA	FRONT COVER WITH COMPL. VALVE	6887.78
1R347805	EXHAUST GAS STUB PIPE	1325.91
1R347873LA	AIR PIPE FROM RH TURBO	2674.18
1R347874LA	AIR PIPE FROM LH TURBO	3477.80
1R347878	FLAP FLANGE	1173.75
1R348512	V1300 INLET VALVE	189.94
1R348631	LF BLOW-BY PIPE	472.99
1R348632	RH BLOW-BY PIPE	561.67
1R348759LA	FUEL PIPE	260.84
1R348760LA	WATER INLET FUEL PIPE	260.84
1R348766LA	I.P. FUEL OUTLET PIPE	413.86
1R348786LA	LF FUEL INJECTOR PIPE	260.84
1R348881	ELASTIC COUPLING VULKARDAN E-5710	42000.77
1R348882	COUPLING, ELEMENT	6678.76
1R348890LA	FUEL FEED. PUMP PIPE	266.62
1R348909	SEA WATER PUMP SUPPORT	988.30
1R348910	SEA WATER PUMP SPACER	853.80
1R348979	BLOCK KEEL COOLER	788.77
1R348988LA	INJECTION PIPE 2ND CYLINDER	785.97
1R348994LA	INJECTION PIPE 8TH CYLINDER	785.97
1R348995LA	INJECTION PIPE 9TH CYLINDER	1070.07
1R348997LA	INJECTION PIPE 11TH CYLINDER	785.97
1R349000LA	WATER PIPE TO HEAT EXCHANGER	358.11
1R349061	EXHAUST SILENCER	65006.61
1R349108	OIL DELIVERY CONDUCT	650.35
1R349163	OIL PIPE BRACKET	335.61
1R349166LA	WATER INLET PIPE	2394.47
1R349167LA	RH COOLER OUTLET PIPE	445.16
1R349184LA	LF COOLER OUTLET PIPE	445.16
1R349205	WATER MANIFOLD	451.00
1R349224LA	OIL COOLER WATER PIPE	193.89
1R349297	BELT PROTECTION BRACKET	215.62
1R349322LA	SEA WATER PUMP ASSY	3721.25
1R349432LA	INTAKE MANIFOLD-ASSY	2695.30
1R349434	COVER	260.84
1R349435	COVER	386.91
1R349475	BLOW-BY PIPE	375.60
1R349479	SEA WATER SEPARATOR	760.78
1R349802	FUEL VAVE BRACKET	130.42
1R349866LA	ASSIEME ACCESSORI IMPIANTO PNEUMATICO	1423.43
1R349870LA	FILTER HOUSING ASSY	1645.21

- Price and part number listed are valid for the North America market only
 - Price and part number listed may be changed without notice
 - Notwithstanding, the only binding price and part number are those identified in FMSNA Inc.'s official offer
 - Parts listed may be subject to U.S. export controls and subject to licensing if exported outside of the U.S.

May 2018 Diesel Engine Parts List

1R349871	AIR FILTER ELEMENT	846.33
1R349936LA	FILTER FUEL INLET PIPE	164.67
1R349937LA	I.P. FUEL INLET PIPE	164.67
1R349956LA	RH INJECTOR FUEL PIPE	158.33
1R349959	THRUST RING	659.83
1R350043LA	AIR FILTER	8236.91
1R350085	FUEL FILTER	50.00
1R350086LA	UPPER RH COVERING-ASSY	4146.17
1R350088LA	UPPER LF COVERING-ASSY	4242.35
1R350090LA	LOWER HEAT SHIELD-ASSY	2299.70
1R350092LA	UPPER HEAT SHIELD-ASSY	2226.25
1R350094LA	LOWER HEAT SHIELD-ASSY	2299.70
1R350096LA	UPPER HEAT SHIELD-ASSY	2226.25
1R350450	V1312 HPCR O130 CYLINDER LINER	846.71
1R350510LA	STOP	1183.12
1R350620LA	PIPE	439.95
1R350621LA	PIPE	439.95
1R350926	SEA WATER PUMP DELIVERY PIPE	2845.71
1R350986LA	SEA WATER PUMP DELIVERY PIPE	2109.29
1R351011LA	COUPLING	5953.30
1R351012LA	I.P. DRIVE COUPLING	6489.58
1R351107LA	BY-PASS PIPE	1011.17
1R351315LA	VALVE ASSY	10775.96
1R351455	DUPLEX FUEL FILTER	3248.27
1R351776E00	CONNECTING ROD BUSHING	437.95
1R351800LAE00 A	V1312 4V HPCR ABS COMPLETE CONROD	2707.09
1R351804LA	RH WATER PIPE	1845.84
1R351830	RH AIR PIPE BRACKET	302.57
1R351835	LF AIR PIPE BRACKET	302.57
1R351907LA	FUEL FEED PUMP COMPLETE	3389.55
1R352018LA	COMPLETE OIL DIPSTICK	639.92
1R352152	GEAR	1338.95
1R598923	WATER EXCHANGER COUNTER SINK CAP	1285.39
1R606215	BRACKET	233.90
1R607137	FUEL PUMP MOUNTING FLANGE	1549.90
1R608152LA	WATER TUBE FROM PUMP TO COOLER -2ND-	3599.58
1R608153LA	RAW WATER PUMP SUCTION TUBE	3359.55
1R608512	PREHEATER, OIL	365.85
1R608893	AIR CARTRIDGE	1245.84
1R609479	GEAR	2963.61
1R609544LA	STARTER ASSEMBLY	8778.84
1R609964LA	WATER PUMP ASSY	5324.43
1R610957LA	COUPLING	4719.66
1R610958LA	JOINT DRIVE INJECTION PUMP	4878.74
1R612327	ENGINE MOUNTING BRACKET	921.95
1R701322LA	GOVERNOR SUPPORT	2535.32
1R701822	CAM FOLLOWER	1083.35
1R702907	RAW WATER PUMP DRIVE ASSY	3853.85
1R703238LA	CONNECTING ROD ASSY	5668.12
1S341160LA	AIR PIPE BRACKET ASSY	517.32
1S341472LA	RH WASTE-GATE BOX	2006.66
1S341703	CYLINDER LINER	3013.94
1S341985LA	SN THERMOSTAT VALVE ASS.	9139.66
1S341986LA	SN THERMOSTAT VALVE ASS.	9139.66
1S342402	DEVICE BREATHER "MANN"	624.46
1S344586LA	INTERCOOLER COMPLETE RH	19367.87
1S344586LB	INTERCOOLER COMPLETE LH	19367.87
1S346181	MAIN BEARING	717.21
1S346189	3-WAY UNION	1192.35
1S346192	CENTRAL BEARING	717.21
1S346301	GOVERNOR ACTUATOR STG2040DP	9811.17
1S346450LA	OIL PUMP	2936.77
1S346602LA	INJECTOR FUEL PIPE	203.45
1S346826	FLYWHEEL	17698.46
1S347597	HEAD GASKET	387.77

- Price and part number listed are valid for the North America market only
 - Price and part number listed may be changed without notice
 - Notwithstanding, the only binding price and part number are those identified in FMSNA Inc.'s official offer
 - Parts listed may be subject to U.S. export controls and subject to licensing if exported outside of the U.S.

May 2018 Diesel Engine Parts List

1S347611LA	PISTON OIL NOZZLE	239.10
1S347626LA	1300-SERIES HEAD GASKET	235.02
1S347798	GASKET BETWEEN CRANKCASE AND OIL SUMP	79.75
1S347811LA	OIL DELIVERY PIPE LH	955.36
1S347812LA	OIL DELIVERY PIPE RH	955.36
1S347813LA	OIL DRAIN PIPE LH	1010.73
1S347814LA	OIL DRAIN PIPE RH	1010.73
1S347892	ADAPTOR	2984.60
1S348419	AIR FILTER SUPPORT	2624.87
1S348593	FILTER, SELF CLEANING	79984.18
1S348635LA	BLOW-BY OUTLET PIPE	1052.21
1S348725LA	PIPE	466.62
1S348903LA	AIR PIPE ASSY	4681.12
1S349036	FLUE OF INTERFACE	3164.80
1S349138	OIL COOLER WATER OUTLET PIPE BRACKET	627.74
1S349161LA	OIL OUTLET PIPE	325.18
1S349295	SEA WATER PUMP BELT PROTECTION	328.65
1S349517	OIL WATER EXCHANGER COVER	2190.20
1S349753	MANIFOLD	1886.71
1S351887LAE00	OIL SUMP	8302.40
1S606880LA	OIL FILTER SUPPORT ASSY	2035.63
1S608640	CYLINDER LINER	3907.31
1S609260	EXCHANGER COVER	1936.43
1S609325	TUBE NEST	9111.84
1S610497	CLAMP	634.75
1S611647	AIR COOLER	11424.58
1S611653	SEA WATER AIR COOLER	13358.23
1S701326LA	SPEED GOV. SUPPORT ASSY.	15911.84
1T340614	CYLINDER HEAD - COMPLETE -	11576.52
1T340922	V1312 CAMSHAFT	3609.02
1T341584LA	TURBO KKK K36.5-4667 OOAKB 13.72	16487.16
1T341588	TURBOCHARGER KKK K36.5 4667 AKB 25.22	15541.41
1T341604LA	TURBO K31 377100AKB 16.71 RZASB	5138.27
1T341973LA	SEA WATER HEAT EXCHANGER	83032.47
1T343032LA	SEA WATER PUMP F&P TS65/1515VS1	11448.92
1T343047LA	OIL/WATER HEAT EXCHANGER COMPLETE	8203.66
1T343549	INJECTION PUMP	25854.58
1T345019	GASKET FOR CRANKCASE/SUMP/FLYWHEEL	115.31
1T345167LA	COMPLETE HEAT EXCHANGER	21683.10
1T345431	OIL SUMP	5314.06
1T345727LA	OIL DIPSTICK TUBE ASSY	663.40
1T346497LA	THERMOSTATIC VALVE ASSY	3513.92
1T347569LA	CRANKCASE V1708T1ML-MHC	169195.28
1T347914LA	INJECTION PIPE SET	13858.17
1T348708LA	CYLINDER HEAD ASSY	11059.40
1T348708LA A	CYLINDER HEAD WITH ABS TEST	17387.10
1T349078LA	FLYWHEEL HOUSING + BARRING DEVICE ASSY	18258.45
1T349171	OIL COOLER HOUSING	1639.16
1T349199LA	OIL COOLER ASSY	15903.54
1T349440LA	CYLINDER HEAD ASSY	12458.35
1T349620LA	SSDG PNEUMATIC OVERSPEED DEVICE	12325.32
1T351460LA	OIL COOLER ASSY	15347.53
1T351718LA	DUPLEX OIL PUMP COMPLETE	16309.84
1T351962LA	THERMOSTATIC VALVE ASSY	3276.96
1T351985	C.R. INJECTION PUMP BOSCH CP9.1 2L3	30281.21
1T351987LA	THERMOSTATIC VALVE ASSY	7020.05
1T351988LA	WATER EXCHANGER COMPLETE	27816.32
1T611552LA	CRANKSHAFT ASSEMBLY	73185.26
1T701111	PUMP, CENTRIFUGAL	23802.00
1T701119	WATER EXCHANGER HOUSING-LH SIDE	1994.72
1T703249LA	COMPLETE WATER PUMP	6927.70
1T703250LA	FRESH WATER PUMP ASSEMBLY	9377.16
1T704438LA	SHEATHED FUEL PIPE ASSEMBLY	16507.93
1Z597615	SPACER	211.58
1Z597616	BUSHING	572.10

- Price and part number listed are valid for the North America market only
 - Price and part number listed may be changed without notice
 - Notwithstanding, the only binding price and part number are those identified in FMSNA Inc.'s official offer
 - Parts listed may be subject to U.S. export controls and subject to licensing if exported outside of the U.S.

May 2018 Diesel Engine Parts List

1Z597617	WOODWARD GOVERNOR	51123.66
1Z597618	PIN	782.51
1Z597619	VALVE SEAT INSERT	113.03
1Z597620	FLYWHEEL MOUNTING RING	845.98
1Z597631	WATER PUMP FRONT COVER	1157.65
1Z597632	WATER PUMP REAR COVER	1335.75
1Z597633	WATER PUMP BODY	2582.45
1Z597634LA	PUMP ASSY, FRESH WTR	15895.50
1Z598063	RELAY, TACHOMETER	3919.48
1Z599130	REAR TIMING COVER	378.64
1Z599134	FUEL SUPPLY PUMP	812.92
1Z599135	INJECTOR TIP	136.77
1Z599136LA	NOZZLE AND HOLDER-ASSY	1292.51
1Z599137	GASKET	79.99
1Z599139LA	LH CAMSHAFT GEAR	1300.00
1Z599142LA	FLANGE	1497.54
1Z599144	CONNECTING STUB	654.52
1Z599149LA	FUEL FEED PUMP	7277.30
1Z599152	VALVE SPRING	97.38
1Z599154LA	FUEL FEED PUMP ASSY	6344.73
1Z599155	DIVERTER VALVE	855.54
1Z599156LA	DIAPHRAGM	559.93
1Z599160	COVER CAP	223.17
1Z599161	SPRING	106.69
1Z599162	BUTTON	80.15
1Z599163	VALVE HOUSING	203.03
1Z599164	VALVE	269.41
1Z599165	GASKET	19.41
1Z599175LA	OIL PUMP BODY ASSEMBLY	8700.20
1Z599176LA	DUPLEX OIL PUMP -COMPLETE-	17694.12
1Z599186LB	DUPLEX OIL PUMP ASSEMBLY	9795.52
1Z599187LA	COOLER,LUBRICATING	15903.53
1Z599191LA	DUPLEX OIL PUMP COMPLETE	18684.50
1Z599193	HOUSING	2593.14
1Z603779LB	PISTON ASSY	4031.46
1Z603781LA	PISTON COOLING TUBE	948.34
1Z604142LA	CONICAL GEARS	3223.92
1Z605033	INJECTION PUMP	106385.91
1Z605077LA	BARRING DEVICE ASSEMBLY	3336.57
1Z605091	FLANGE	419.07
1Z605227	GASKET	46.95
1Z605229	GASKET	52.59
1Z605324	LOCK PLATE	100.86
1Z605680	MAIN BEARING, ASSEMBLY	1085.08
1Z605694LA	OIL TUBE	2315.30
1Z605710	FILTER ELEMENT,INTA	33.67
1Z605791	1# COMPRESSION RING	511.24
200058F91	BALL VENT COCK 1" GAS	146.07
20-0281011	RETAINER, OIL 20-0281011	58.42
2005A	WASHER COPPER	6.06
201528F91	TORQUE SPANNER KIT (COMPLETE)	5996.60
202587F91	MALE SQUARE ADAPTER	209.97
202656F01	UNION M14X1.5 - G1/2"	26.00
202762F01	REDUCTION	9.39
202980F01	FLYWEIGHT	728.86
204656F01	CLAMP RING	19.74
204670F01	FLUID PASSAGE BOLT	24.31
204756F01	UNION	60.10
204876F91	COCK	322.57
206199F01	RING,SEAL	51.65
206226F01	HOSE, FLEX	423.95
206441F92	THERMOSTATIC VALVE	7505.52
206811F91	BUSHES KIT	580.91
207738F01	CARRY RUBBER UNION	46.33
208028F91	ELEMENT,AIR FILTER	964.80

- Price and part number listed are valid for the North America market only
 - Price and part number listed may be changed without notice
 - Notwithstanding, the only binding price and part number are those identified in FMSNA Inc.'s official offer
 - Parts listed may be subject to U.S. export controls and subject to licensing if exported outside of the U.S.

May 2018 Diesel Engine Parts List

209439F91	EXHAUST GAS BELLOW	2629.66
209803F91	HOSE	2225.79
210249F91	AIR FLEX PIPE	1149.45
210526F91	TORQUE SPANNER	3855.48
210527F91	PROTRACTOR	869.88
210528F91	TORQUE SPANNER KIT (COMPLETE)	5996.60
210529F91	TORQUE SPANNER KIT	3340.81
210530F91	DINANOMETRIC WRENCH	733.82
210531F91	BUSHES KIT	184.32
213970F91	FLEXIBLE HOSE	2350.99
216257F91	AIR TUBE	155.98
216258F91	AIR TUBE	203.98
216259F91	AIR TUBE	139.39
216260F91	AIR TUBE	52.71
216261F91	AIR TUBE	52.71
216267F91	BRACKET	544.28
223642F01	SPECIAL DOWEL	78.36
223652F01	INSULATING GASKET	112.99
223653F01	INSULATING SLEEVE	25.01
223655F01	INSULATING WASHER	33.01
223658F01	INSULATING WASHER	44.53
223659F91	CLAMP	239.97
223660F01	RUBBER BAND	9.60
223663F92	STRAIGHT FLANGE	780.95
223671F02	INSULATING PLATE	155.98
223690F91	INDICATOR LEVEL	1659.78
223716F91	WATER HEATER	1389.18
223728F91	OIL DIPSTICK GUIDE: UPPER	623.35
223806F91	MOUNT,RESILIENT,GEN	8520.61
223819F91	CONTROL, SWITCHBOARD	15777.04
224037F91	IMPLEMENT-MANEUVER COMPL.	1412.85
224068F01	FLEX PIPE	2357.39
224151F01	O-RING FOR FLANGE	1.10
224243F91	WTR INLT TUBE TO FL COOLER AY	847.76
224246F01	GASKET 1 1/2	27.00
224288F01	DADO AUTOBLOCCANTE M12	6.95
224325F91	TUBE, WTR DEL TO FUEL CLR, 1ST.	1434.59
224332F01	SPACER	26.72
224435F01	TUBE, FLEXIBLE	498.68
224450F91	FLEX PIPE	429.95
224946F01	GASKET	11.74
2254L002	DIAPHRAGM	142.42
2301D-EC	GOVERNOR,DIESEL ENG	3615.44
2414-469	SEAL	43.99
2418-963	SEAL, PLAIN ENCASED	388.35
2594-4411-10	FITTING	290.46
2807-12	3/4" HYDRAULIC HOSE	35.05
288-312	RELAY,ELECTROMAGNET	339.46
2K57620010-C	COUPLING,SHAFT,FLEX	7337.73
2SITA 134.1	SESINO HEAT EXCHANGER ANODE	83.92
2Z1	ANODE, ACTUATOR BODY	671.21
3002104-001	MOTION SENSOR PACKAGE PWB ASSEMBLY	3450.21
3004709-003	BEARING,ROD END	1500.00
3005347-060	CABLE HARNESS ASSY, SERVO VALVE	1526.11
3005434-001	PIN, PUSHROD	4890.37
3005434-002	HINGE PIN	2047.58
3005434-003	PUSHROD PIN WASHER	1141.00
3005434-004	PUSHROD PIN SPACER	575.93
3005434-005	HINGE PIN SPACER	353.44
3005434-006	PUSHROD SPACER WASHER	795.27
3005434-007	SEAL PLATE HINGE BUSHING	559.64
3005434-008	BUSHING,PUSHROD BOS	305.56
3005434-009	BLADE HINGE BUSHING	441.83
3005434-010	HINGE THRUST WASHER	147.29
3005434-011	ACTUATOR MOUNTING PIN	4035.04

- Price and part number listed are valid for the North America market only
 - Price and part number listed may be changed without notice
 - Notwithstanding, the only binding price and part number are those identified in FMSNA Inc.'s official offer
 - Parts listed may be subject to U.S. export controls and subject to licensing if exported outside of the U.S.

May 2018 Diesel Engine Parts List

3005434-012	ACTUATOR MOUNTING PIN SPACER	1300.67
3005434-013	ACTUATOR MOUNTING PIN WASHER	950.13
3005434-014	ACTUATOR MOUNT SPACER WASHER	206.20
3005434-015	ACTUATOR ATTACHMENT BEARING	248.67
3005498-001	CABLE HARNESS ASSEMBLY- MIO-J8/J9	202.64
3005498-002	CABLE HARNESS ASSEMBLY MIO-J2	188.22
3005498-003	CABLE HARNESS ASSEMBLY, MIO-J1/J3	170.94
3005498-004	CABLE HARNESS ASSEMBLY, CAN-J7/J8	116.92
3005498-005	CABLE ASSEMBLY,SPEC	149.12
3005498-006	CABLE HARNESS ASSEMBLY, COM-1/2	197.52
3005498-007	CABLE HARNESS ASSEMBLY, COM-3/4	154.95
3005654-002	SYSTEM DISPLAY AND CONTROL UNIT	14735.25
3005693-012	ACTUATOR POSITION FEEDBACK SENSOR	7488.35
3005773-001	DC-DC CONVERTER, 24Vin, 24Vout	1375.43
3005773-005	DC-DC CONVERTER, 24Vin, 5V & 15V out	1505.04
3005874-002	ACTUATOR PROXIMITY SWITCH	1243.68
3005945-007	DISPLAY UNIT, SERVO JUNCTION BOX	3781.75
30942F01	BY-PASS VALVE	187.81
30982K	CLEAR BOWL 2000/10	104.33
310024F01	SECURING CLAMP FOR INJECTOR	55.17
310037F01	ENGINE FLYWHEEL SECURING SCREW	44.00
310085F01	CYL. HEAD CENTERING BUSH	14.52
310093F01	GASKET	5.65
310168F01	FRONT BUSH FOR CAMSHAFT	183.98
310169F01	CAMSHAFT BUSHING	71.45
310235F01	GEAR, RIMING DRIVE	1061.32
310236F01	OIL SEAL SLEEVE	1158.11
310291F01	RING	226.72
310314F02	GASKET, GAS, TURBO, K28	69.36
310343F01	RING, SPACER	302.57
310369F91	THERMOSTAT	419.34
310523F01	TOOTHED PULLEY	1535.22
310650F01	RH CAMSHAFT	5353.24
310651F01	LH CAMSHAFT	5353.24
310730F01	GASKET	16.35
310765F01	2ND COMPRESSION RING	377.90
310767F01	PISTON PIN	577.31
310842F91	CYLINDER HEAD-COMplete	9641.64
310844F91	PUSH ROD	188.94
310899F01	SPRING SEAT	17.64
310900F01	SPRING SEAT	25.19
310965F01	LOCKING PLATE	4.64
310971F01	TURBOCHARGER OIL SLEEVE	38.71
311002F01	RIGHT TURBOCHARGER OIL SLEEVE	60.33
311066F91	PUSHROD COMPLETE	71.79
311075F91	ENGINE SUPPORT BRACKET	820.70
311139F91	OIL TUBE	267.15
311140F91	OIL TUBE	318.22
311262F01	RH CAMSHAFT	7480.21
311263F01	LH CAMSHAFT	7480.21
311265F93	CRANKCASE-ASSEMBLY	213720.36
311301F91	WATER TUBE	1309.04
311302F91	WATER TUBE	1531.66
311304P95	HYDRAULIC OVERSPEED ASSY	8695.21
311305P01	FLYWEIGHT	327.70
311306P01	PRE DEPERMING SPRING	147.80
311353F91	RING, SPACER	378.21
311354F91	BRACKET	392.99
311418F01	GASKET	28.26
311427F91	CONNECTING ROD COMPLETE	1535.75
311446F01	INLET VALVE	183.80
311580F01	SPRING FOR VALVE	35.62
311597F91	AIR TUBE	250.41
311633F91	OIL DELIVERY TUBE	516.46
311634F91	OIL DELIVERY TUBE	119.99

- Price and part number listed are valid for the North America market only
 - Price and part number listed may be changed without notice
 - Notwithstanding, the only binding price and part number are those identified in FMSNA Inc.'s official offer
 - Parts listed may be subject to U.S. export controls and subject to licensing if exported outside of the U.S.

May 2018 Diesel Engine Parts List

311635F91	OIL DELIVERY PIPE	150.41
311700F01	INTAKE VALVE	440.13
311761F01	CONNECTING ROD BUSHING	311.26
311830F01	END COVER FOR HEAT EXCHANGER	1231.15
311941F91	FUEL TUBE	861.61
311942F91	FUEL TUBE	861.61
311943F91	FUEL TUBE	861.61
311957F92	WATER COOLER-COMPLETE	26381.15
311968F91	HYDRAULIC CYLINDER	1157.65
311973F91	FLANGE	163.46
311981F91	WATER TUBE	373.29
311986F91	OIL DISCHARGE TUBE	181.36
311999F91	OIL TUBE	146.93
312004F91	OIL TUBE	233.93
312005F91	OIL TUBE	166.52
312054F01	BEARING, ROLLER, NEEDLE	235.79
312057F01	SHIM	42.94
312058F01	SHIM	42.94
312267F01	EXTENSION	53.30
312302F01	SUPPORT RH	40690.26
312312F01	SPRING SEAT	308.59
312313F01	PLUG	59.76
312314F01	STUD	18.20
312315F01	HUB	204.82
312366F01	STUB	198.23
312376F91	GEAR ASSY, DOUBLE DRIVE	7254.69
312377F01	SPACER	387.78
312378F01	PIN	627.75
312602F01	NIPPLE,TUBE	145.20
312662P91	DOUBLE GEAR ASSY	7726.98
312729F01	GASKET	64.00
312743F01	LEVEL INDICATOR	354.74
312744F01	CONNECTING STUB	4382.03
312745F01	FLANGE	642.70
312749F01	VALVE GUIDE	215.98
312756F91	THERMOSTAT VALVE	968.57
312758F01	GASKET	56.69
312797F91	BODY,VALVE-ASSEMBLY	466.70
312834F01	STUD	91.30
312840F91	FUEL DRAIN TUBE	73.04
312841F91	FUEL DRAIN TUBE	85.00
312842F01	FLUID PASSAGE BOLT	14.78
312843F91	TURBOCHARGER SCHWITZER	11586.29
312848F91	FUEL DRAIN TUBE	58.45
312892F91	OIL DELIVERY TUBE	559.93
312895F91	OIL DISCHARGE TUBE	267.15
312991F91	SHIMS	167.41
312994F91	SHIMS	187.01
313004F01	TIMING ADJUSTMENT DISK	343.73
313044F01	SPECIAL SCREW	58.00
313045F91	REGULATOR VALVE-ASSEBLY	2125.72
313055F01	PLUG	163.46
313056F01	ELECTROLYTIC STRAP	38.26
313057F01	CRYSTAL GAUGE	561.67
313058F01	GASKET	8.91
313059F01	COVER	202.41
313323F91	FUEL DRAIN TUBE	115.64
313325F91	FUEL TUBE	85.29
313636F01	GASKET FOR OIL/WATER HEAD-EXCHANGER BODY	94.39
315013F91	VALVE,VENT	19.15
315101F01	INLET VALVE SEAT	70.94
315102F01	EXHAUST VALVE SEAT	70.94
315174F01	HEATER GASKET	33.16
315277F91	SEAL	15.81
315291F01	NUT	23.68

- Price and part number listed are valid for the North America market only
 - Price and part number listed may be changed without notice
 - Notwithstanding, the only binding price and part number are those identified in FMSNA Inc.'s official offer
 - Parts listed may be subject to U.S. export controls and subject to licensing if exported outside of the U.S.

May 2018 Diesel Engine Parts List

315335F91	OIL SUMP V1308T2	6473.05
315348F91	MAGNETIC SWITCH FOR LOW WATER LEVEL	938.04
315355F01	ZINC ANODE	43.47
315356F01	ANODE HOLDER PLUG	66.77
315357F01	INSPECTION PLUG	40.86
315358F91	CAP FOR WATER TANK	109.17
315361F01	GASKET FOR THERMOSTATIC VALVE SEATING	31.75
315364F91	OPTICAL LEVEL INDICATOR	285.18
315402F01	WASTE GATE GASKET	35.82
315428F91	CYLINDER HEAD COMPLETE WITH VALVES	3509.44
315435F01	VALVE GUIDE	50.00
315447F01	BRACKET FOR SECURING PIPE	43.44
315460F92	OIL COOL. RETURN PIPE	661.20
315466F01	INJECTOR GASKET	2.47
315483F01	GASKET FOR OVAL FLANGE	5.22
315495F01	K36 TURBOCHARGER GASKET	81.73
315553F01	GASKET, OIL INLET TURBOCHARGER	9.60
315741F91	OIL PRESSURE REGULATING VALVE COMPLETE	634.51
315976F01	COMPRESSION RING	234.22
320016F91	OIL TUBE	82.98
320092F01	CENTER DISK	459.06
320102F91	UPPER HALF HOUINF THERM ASSY	2577.66
320170F01	FLANGE	226.19
320317F01	BUSHING	403.94
320319F01	BUSHING	256.48
320578F01	BUSHING	377.57
320647F01	EXHAUST MANIFOLD GASKET	90.43
320650F91	THERMOSTAT	327.35
320658F01	FLUID PASSAGE BOLT	51.29
320685F01	SCRAPER RING	521.67
320686F01	PISTON RING (2ST Groove)	293.87
315809F91	FLYWHEEL COMPLETE	5703.21
320816F01	THERMOSTAT VALVE GUIDE	304.31
320817F01	FLANGIA VALVOLA TERMOST.	177.72
320843F01	CLAMP RING	91.99
320866F91	BELLOW, DOUBLE	2735.89
320868F01	LOCKING COLLAR	386.04
320882F91	WATER COOLER	51732.27
320883F91	THERMOSTAT VALVE HOUSING	4136.84
320890F01	EXHAUST MANIFOLD 3RD-4TH CYL.LEFT	3205.81
320891F01	EXHAUST MANIFOLD 1ST-2ND CYL.RTG	4274.41
32120D006A4	TEMPERATURE GAUGE	196.36
321261F91	ELECTROSTOP	594.12
321266F01	INJECTION PUMP LEVER	112.04
321294F01	YOKE	12.48
321297F01	STUD BOLT	12.26
321401F01	VALVE SEAT INSERT	236.04
321434F01	MAIN BEARING CAP ADJUSTING	695.10
321435F01	MAIN BEARING CAP MIDDLE	695.10
321436F01	MAIN BEARING CAP REAR	695.10
321437F01	MANIN BEARING CAP	695.10
321438F91	TURBOCHARGER	13286.93
321554F91	EXHAUST MANIFOLD GASKET	76.79
321588F01	GASKET SET, ENGINE	1502.41
321701F91	TOOL BOX	811.10
321729F91	RING, COMPLETE STD	281.97
321840F91	FUEL COOLER TUBE NEST	35516.50
321843F01	ANODE/WITH PLUG	129.30
321883F01	GASKET	20.45
321890F01	VENTILATORE	1590.04
321988F01	GASKET FOR INJECTOR SPILL	2.51
321992F01	SPACER	229.76
322011F01	BELT	164.57
322081F91	CARTRIDGE FOR DUPLEX CHANGE-OVER FILTER	63.23
322101F01	ODD SHAPED EXTRUSION, 60 DURO BLACK NEOPRENE	46.12

- Price and part number listed are valid for the North America market only
 - Price and part number listed may be changed without notice
 - Notwithstanding, the only binding price and part number are those identified in FMSNA Inc.'s official offer
 - Parts listed may be subject to U.S. export controls and subject to licensing if exported outside of the U.S.

May 2018 Diesel Engine Parts List

322118F01	HANDLE	71.24
322119F01	KNOB	48.09
322121F01	DOG,FLAT,LONG	88.16
322141F01	DIELECTRIC	39.18
322203F91	LAMINATED GLASS	834.85
345350-B012B1	COUNTER ROCKER ARM ASSEMBLY	475.30
345351-B012B1	COUNTER ROCKER ARM ASSEMBLY	473.12
345354-C012P1	EXHAUST VALVE	185.98
345355-C012P1	INLET VALVE	185.98
345357-C012L1	VALVE CONE	21.76
345361-C012P1	INTAKE VALVE SEAT	89.28
345362-C012P1	EXHAUST VALVE SEAT	89.28
345363-C012L2	CENTER BUSHING	7.69
345364-C012L2	PIN	11.22
345365-C012L1	VALVE GUIDE	78.34
345394-B072B1	EXHAUST MANIFOLD ASSEMBLY	6864.09
345395-B072B1	LEFT EXHAUST ELBOW ASSY	7225.45
345399-C044N1	GAS GASKET TURBO	193.70
345436-C047L1	OUTLET AIR CONVEYOR	3177.18
345437-C047N2	INTERCOOLER AIR GASKET	37.01
345440-C047P2	INTERCOOLER AIR SLEEVE RIGHT	171.62
345441-C047P2	INTERCOOLER AIR SLEEVE LEFT	182.20
345443-B043B1	INTAKE MANIFOLD	3215.78
345448-C072N1	GAS GASKET	127.74
345449-C072L2	CENTERING BUSH	32.43
345472-C043N2	INTAKE MANIFOLD GASKET	21.60
345474-C012L1	HEAD SCREW	93.59
345953-B012B1	ROCKER ARM ASSY	1365.42
346079-A029B1	CAM FOLLOWER BLOWBY 4V HPCR	4065.19
346080-A029B1	4V HPCR PUSH ROD COVER ASSY	2714.35
347196-C028N4	FRONT PLATE PACKING	145.18
347201-C028N4	COVER TIMING GEARS	249.19
347202-C028P1	BALL BEARING	197.14
347425-C028N4	POWER TAKEOFF PACKING	7.26
347432-C021P1	OIL HEAT EXCHANGER	2718.30
347435-B035B1	WATER COOLING ASSY	22767.61
347436-C035L2	BUSHING	783.82
347440-C035L2	BUSHING	266.07
347441-B035B1	EXPANSION TANK ASSY	8771.61
347446-C035C1	SUPPORT	5307.75
347457-C070P3	FLEXIBLE PIPE 234 L=500	171.95
347482-C035P3	HOSE L 60	45.27
347483-C035P3	HOSE L 110	54.80
347484-C013N4	OIL SUMP GASKET	167.01
347489-B013B1	SAFETY VALVE ASSY	802.84
347495-C033P1	SEA WATER PUMP IMPELLER	386.73
347498-C033P1	SEAL RING	25.15
347499-C033P1	SEAL RING	158.44
347501-C033P1	SEAL RING	10.33
347506-C070L1	SEA WATER PIPE	3773.56
348219-C012P3	SPRING VALVE	36.80
348519-C034P3	RUBBER HOSE ø89 L.100	353.16
348522-C034P3	RUBBER HOSE ø38 L.70	202.78
355303M91	DRIVE ASSEMBLY	11077.84
356160M91	PISTON COOLING OIL NOZZLE COMPLETE ASSY	182.58
356381M91	ENGINE STAND	676.73
356745M91	CAM FOLLOWER SUPPORT ASSY	858.60
356746M91	CAM FOLLOWER SUPPORT ASSY	956.41
356828M91	EXHAUST DRAIN LF COMPLETE	156.50
356917M91	I.P. GOVERNOR ASSY	12283.63
356919M91	INJECTION PUMP COMPLETE	108063.94
357230M91A	V1708 BLOCK	203346.96
357268M91	CYLINDER HEAD WITH VALVES	3276.88
357309M91	ASSEMBLY - LINE	204230.37
357500M91	OIL PUMP AND FILTERS	20168.45

- Price and part number listed are valid for the North America market only
 - Price and part number listed may be changed without notice
 - Notwithstanding, the only binding price and part number are those identified in FMSNA Inc.'s official offer
 - Parts listed may be subject to U.S. export controls and subject to licensing if exported outside of the U.S.

May 2018 Diesel Engine Parts List

395L001	ORING	3.13
3B355867202	TEMPERATURE GAUGE	937.27
3EDRNK13BHXZZYZ	TEMPERATURE SENSOR	485.59
40-1003	O-RING 10 IN INNER	17.54
40-1019	SILENCER/LID ASSY 10" LARGE	567.18
403753F91	HEATER	705.91
403884F91	ELECTROVALVE	13657.32
404998F91	PRESSURE SWITCH	1201.84
405208F91	THERMOSTAT	1657.78
405209F91	THERMOSTAT	2057.73
406812F91	ELECTRICAL STARTER W/ PINION	21235.19
406937F91	HEATER	615.92
406948F91	OIL PRESSURE TRANSMITTER	455.94
406959F91	PRESSURE INDICATOR	549.53
406973F91	TEMP SENDER WATER/OIL	227.97
406975F91	SWITCH	2065.54
407078F91	ELECTROVALVE	1332.25
407512F91	THERMOSTAT	1657.78
408213F91	MICROSWITCH	536.01
408295F92	OIL HEATER	1371.37
408379F91	WATER HEATER	979.84
408416F91	LUBRICATOR	803.90
408911F91	BATTERY SET	2787.63
409118F91	1-BAR PRESSURE GAUGE	1410.88
409407F91	SILENCER	695.91
409979F91	MURPHY OIL LEVEL	2081.73
41173600365W	SCREW M 12x30	8.00
41173670518W	SCREW M 20x30	65.83
41883401(SET)	INSERT SET, FLEXIBLE	3283.04
45499F01	GASKET	22.61
45991F01	GASKET	19.04
46457F01	GASKET	5.22
46500600545W	PIN,COTTER	40.05
48372F01	GASKET	15.65
49772F01	COVER	99.12
4BTX-SS	SS FLARE NUT	4.28
4TX-SS	SS FLARE SLEEVE	3.27
50196F01	SET SCREW	34.56
50M203M-50S	THERMOSTATIC SENSOR	1652.86
54456F01	SPRING	71.30
55119F01	SPRING	64.69
55121F01	ROTOR	1092.00
55251F01	PLUG	50.43
55502F01	GASKET	55.64
55546F01	COVER	146.07
56100000968R	PIPE END FITTING	48.00
56100001358R	PIPE END FITTING	48.00
57787F01	GASKET	9.56
58608F91	BEARING (TWO HALVES)	445.25
58711F02	RING	440.84
58838F01	PISTON PIN	534.30
58921F01	SPHERICAL ROD END-FEMALE	79.99
58922F01	SPHERICAL ROD END-FEMALE	76.58
59071F01	PLUG	18.90
59073F01	TUBE	31.47
59074F01	O.RING	9.41
59079F01	SPECIAL WASHER	29.57
59527F01	GASKET	11.90
59862F01	TUBE	48.69
59867F01	TUBE	48.69
59884F01	CROSS-HEAD GUIDE	32.06
60275F01	O-RING	16.56
60300009040R	HAND PUMP	1173.75
60399F01	KNOB	7.03
606/20	CLICK-TYPE TORQUE WRENCHES	419.94

- Price and part number listed are valid for the North America market only
 - Price and part number listed may be changed without notice
 - Notwithstanding, the only binding price and part number are those identified in FMSNA Inc.'s official offer
 - Parts listed may be subject to U.S. export controls and subject to licensing if exported outside of the U.S.

May 2018 Diesel Engine Parts List

606/30	CLICK-TYPE TORQUE WRENCHES	476.46
60820F01	CLAMP	25.04
60823F01	GROMMET	20.00
61488F01	GASKET	45.91
61498F01	LOCKING PLATE	14.78
61513F01	THRUST PAD	379.08
61515F01	LOCKING PLATE	6.96
61516F01	COVER	185.19
61530F01	WASHER,SPECIAL	10.00
61541F01	SHIM	13.04
61543F01	GASKET	29.39
61548F01	BUSHING	153.03
61567F01	TUBULAR,DOWEL	26.00
61568F01	BLOCK	286.92
61571F01	PLUNGER	227.80
61572F01	SPRING	78.25
61573F01	SPRING SEAT	16.00
61574F01	SHIM	4.66
61619F01	GASKET	44.53
61621F01	GASKET	50.39
61641F01	GASKET	13.48
61676F01	RETAINER	29.06
61750F01	RING,SEAL	101.53
61771F01	GASKET	9.31
61790F01	COVER	151.15
61791F01	GASKET	2.19
61796F01	GASKET	13.39
61829F01	SHIM	701.13
61833F01	NUT	42.51
61910F01	SPRING	32.66
61924F01	SPHERICAL ROD END-FEMALE	181.66
61938F01	SPRING	45.34
62025F91	WOODWARD GOVERNOR	32213.74
62029F01	LEVER INJECTION PUMP	601.66
62034F01	SCREW	41.74
62060F91	AIR FILTER	41.32
62062F01	SLEEVE	30.28
62252F01	LH SPHERICAL ROD END-MALE	114.77
62363F01	VALVE SEAT	28.50
62681F01	GASKET	3.12
62696F01	BOLT	37.78
62709F02	PORT COVER	113.03
62710F01	GASKET	37.78
62762F01	STUD	15.65
62867F01	RH CAMSHAFT	7633.58
62868F01	LF CAMSHAFT	7633.58
62914F01	GASKET	14.25
62951F91	GEAR-ASSEMBLY	2224.09
62953F01	BUSHING	258.25
62954F01	SHAFT	242.55
62955F01	WASHER	38.26
63095F01	GASKET	9.07
63117F02	GASKET	76.52
63158F91	FREE PIN	204.82
63162F01	LOCKING PIN	59.12
63335F01	WASHER, OIL PUMP	8.86
63353F01	SPECIAL SCREW	66.08
63565F91	OIL FILLER STRAINER	88.17
63595F02	HOLLOW,DOWEL	59.06
63598F01	SHIM	150.07
63600F01	GASKET	5.66
64143F01	GASKET	6.77
64227F01	DOWEL, TUBULAR	76.17
64411F01	HOUSING	5224.18
64415F02	OIL SUCTION MANIFOLD	300.96

- Price and part number listed are valid for the North America market only
 - Price and part number listed may be changed without notice
 - Notwithstanding, the only binding price and part number are those identified in FMSNA Inc.'s official offer
 - Parts listed may be subject to U.S. export controls and subject to licensing if exported outside of the U.S.

May 2018 Diesel Engine Parts List

64417F91	OIL DELIVERY MANF-ASSY	410.02
64420F92	RELIEF VALVE-ASSEMBLY	751.21
64425F01	COVER	847.89
64426F01	GASKET	11.04
64427F01	FLANGE	60.87
64429F01	GASKET, THERMOSTAT HOUSING	22.07
64433F01	GASKET	13.36
64434F01	SUPPORT, LEFT	1898.88
64435F01	GASKET	19.13
64459F01	BOLT	7.12
64564F01	BUSHING	236.42
64565F01	BUSHING	81.60
64871F01	VALVES CONE (1/2 HALVES)	33.04
64872F01	WASHER,SPECIAL	5.43
65036F01	BUSHING	87.55
65037F01	TUBULAR, DOWEL	30.43
65132F01	GUIDE,SPRING	119.99
65133F01	HOUSING	173.89
65134F01	SPRING	120.38
65164F01	GASKET	103.46
65180F01	GASKET	11.47
65204F01	BEARING NEEDLE	60.87
65205F01	OIL SEAL	14.78
65276F01	SHAFT	273.01
65310F01	WASHER,SPECIAL	107.24
65356F01	BELT,POSITIVE DRIVE	136.50
65453F01	ELECTROLYTIC STRAP	24.35
65454F01	GROUNDING STRAP	104.33
65548F01	PLUG	19.56
65586F01	LOCKING PLATE	17.39
65701F01	GASKET	231.53
65703F01	PROTECTION RING	12.17
65802F01	GASKET	34.61
65951F01	STUD	12.18
66309F91	PUSH ROD	108.84
66325F01	COPPER WASHER	2.58
66507F01	RH CAMSHAFT GEAR	1959.74
66508F01	GEAR	1959.74
66509F02	GEAR	3213.49
66512F01	GEAR	1787.77
67366F01	SCREW	6.06
67372F91	WATER COOLER	28504.92
67387F01	GASKET	12.49
67516F91	VALVE-ASSEMBLY	851.12
67559F01	HOLLOW SCREW	12.78
67564F01	O.RING	6.66
67576F01	COVER	163.46
67620F01	GASKET	24.55
67622F01	GASKET	26.09
67652F01	PIN,DOWEL	25.22
67653F01	PIN, DOWEL	30.43
677/C70	TORQUE 677/70 IN PLASTIC CA	1810.19
68096F01	SEALING SLEEVE	19.13
68583F91	DRAIN COCK	22.61
68830F91	CYLINDER FUEL TUBE	213.72
69182F01	SPRING	48.00
69274F01	GASKET	40.62
69339F01	O.RING	6.50
69397F01	PLUG, VENT	30.43
69503F02	NIPPLE	38.00
69504F91	OIL FILTER CARTRIDGE	70.20
69792F01	STUD, SPECIAL	13.04
70082F01	GASKET, INTAKE MANIFOLD	30.00
70244F91	OIL COOLER "BEHR"	7305.58
70333F01	LEVER	80.82

- Price and part number listed are valid for the North America market only
 - Price and part number listed may be changed without notice
 - Notwithstanding, the only binding price and part number are those identified in FMSNA Inc.'s official offer
 - Parts listed may be subject to U.S. export controls and subject to licensing if exported outside of the U.S.

May 2018 Diesel Engine Parts List

70349F01	GASKET	25.55
70353F01	LOCKING PLATE	8.69
70379F01	SPACER	64.67
70380F01	HOUSING	1601.79
70383F01	SHIM	587.75
704.404.0	ACTUATOR, SWITCH, 2-POS	121.86
704.900.3	CONTACT ASSEMBLY,EL	68.48
704.900.4	CONTACT ASSEMBLY,EL	69.94
704131624U01	STUD	0.97
70433F01	OIL SCRAPER RING	298.40
704-410.0	SWITCH SUBASSEMBLY	116.98
704421303U01	STUD	8.01
704472591U01	STUD M10X1.25/M10X22 5913	12.00
704472609U01	STUD	13.04
704472641U01	STUD	14.78
704472657U01	STUD	7.76
704472664U01	STUD	9.06
704492170U01	STUD	7.12
704492641U01	STUD	20.62
704492657U01	STUD	22.40
70454F01	BUSHING	159.98
70514F01	VALVE HOLDER	178.24
70542F01	GASKET	13.31
705572140U01	STUD	7.12
705662150U01	STUD	9.80
70594F01	ELECTROLYTIC ANODE	30.43
70595F01	PLUG	41.71
706-249-629	ELEMENT, SELF-CLEANING MAIN FILTERING	12725.26
706-249-630	ELEMENT,SLUDGE RECOVERY FILTERING	9127.64
706-249-631	ELEMENT, MAIN FILTER, DIFF PRESS INSTR	2518.34
706-249-633	PACKING,PREFORMED	438.92
706-249-634	GEAR REDUCER	4529.84
706-249-635	GEAR SHAFT	912.93
706-249-636	GEAR MOTOR	2173.63
706-249-643	BUSHING,SLEEVE	204.82
706-249-645	SELF CLEANING FILTER COVER GASKET	21.57
706-249-647	NOZZLE, MAIN FILTERING ELEMENT	4399.16
706-249-648	MAIN FILTERING ELEMENT GASKET	9.03
706-249-652	VALVE ROOT	532.10
706-249-653	ELEMENT, SLUDGE RECOVERY FILTER	2518.34
706-249-656	RING,DIVISIONAL	5704.14
706-249-658	ELEMENT, SLUDGE RECOVERY FILTERING	29.56
706-249-665	VALVE,SAFETY SPRING	638.19
706-550-530	CARTRIDGE, PRIMARY	18101.95
706-550-531	FILTER ELEMENT, FLUID	12546.16
70807F93	FILTER, OIL, COMPLETE	5666.64
70831F03	BODY, OIL SUCTION SCREEN	321.70
708534120U01	SCREW	11.69
708582172U01	BOLT	9.08
708582658U01	BOLT	5.34
708611665U01	BOLT, MACHINE	2.61
708612140U01	BOLT, MACHINE	1.74
708612144U01	BOLT M8 X 40	2.96
708612156U01	BOLT, MACHINE	1.43
708612157U01	BOLT M8 X 75	3.69
708612168U01	BOLT M8 X 110	8.28
708612172U01	BOLT	44.46
708612609U01	BOLT	5.36
708612629U01	BOLT	3.24
708682658U01	BOLT	5.34
708723266U01	BOLT	13.31
708723276U01	BOLT	13.31
70898F01	SCREEN	101.73
70932F92	GOVERNOR DRIVE ASSY	4059.47
709332591U01	SCREW	2.30

- Price and part number listed are valid for the North America market only
 - Price and part number listed may be changed without notice
 - Notwithstanding, the only binding price and part number are those identified in FMSNA Inc.'s official offer
 - Parts listed may be subject to U.S. export controls and subject to licensing if exported outside of the U.S.

May 2018 Diesel Engine Parts List

709332605U01	BOLT	4.17
709332609U01	SCREW	5.03
70935F01	SHIM	5.22
70936F01	SHIM	24.35
709372591U01	SCREW	6.29
70940F01	STUD	13.04
70959F01	GEAR	1763.27
71019F01	GEAR	1145.07
71020F01	SHIM	6.96
71021F01	SHIM	6.96
71022F01	RETAINER	339.95
71037F91	CLAMP	330.40
71053F91	PIN-ASSEMBLY	149.98
71056F91	SEAT-ASSEMBLY	174.54
71059F01	BUSHING	29.21
71060F01	RETAINER	149.55
71075F92	OVERSPEED DEVICE	8498.88
71130F92	FUEL FILTER DUPLEX	1389.12
71282N	TEE BOLT AND KNOB CLAMP	60.10
71400000030R	SAFETY ELASTIC RING	540.71
714902594U01	SCREW	29.85
71503F01	1ST COMPRESSION RING	356.20
715042160U01	SCREW	14.37
715062645U01	SCREW	8.00
7154L094	SPRING	43.82
71596F01	SPRING	44.53
71664F93	OIL PAN WELDED ASSY	28836.15
71683F01	SEAL,OIL	26.54
71687F01	PLUG	23.01
71690F01	NUT	4.45
71768F01	BOLT,SPECIAL	24.04
71814F91	FUEL TUBE	71.99
71865F91	90# ELBOW TUBE	82.60
71867F01	NIPPLE TUBE	53.91
71977F01	WATER PUMP SEAL	251.92
720/C12	IMPACT SOCKETS IN CASE	373.00
720-112-040	GAUGE, SLUDGE W/DC SWITCH	8192.60
72059F03	SCREW	77.38
72060F01	SET SCREW	16.52
72072F01	SUPPORT	1468.08
721482575U01	SCREW	5.22
72167F01	TOOTHED PULLEY	1045.95
72175F01	BELT POSITIVE DRIVE	59.16
72199F01	BOLT,FLUID PASSAGE	10.44
72293F01	SHIM	15.65
72294F91	BRACKET	37.39
722963438U01	SCREW	35.62
72297F91	BEVEL GEAR SET	2995.26
72300F01	SHIM	10.44
72369F01	LOCKING PLATE	19.13
72487F01	OIL SEAL SLEEVE	1208.54
72488F01	OIL SEAL	359.96
724910521U01	NUT	4.35
72496F01	INTERMEDIATE BRIDGE	760.77
725294439U01	NUT PLAIN HEX	12.07
725295047U01	NUT	40.00
72580F01	GEAR	974.93
72581F01	SPACER	69.28
72592F91	LH SHAFT-ASSEMBLY	1032.98
72593F91	RH SHAFT-ASSEMBLY	1068.60
726411237U01	ELASTIC STOP NUT	1.81
726510624U01	THERMAG NUT	4.99
726512534U01	PREVAILING TORQUE NUT	15.65
72672F01	THICKNESS GAUGE	62.47
72743F01	SHIM	65.90

- Price and part number listed are valid for the North America market only
 - Price and part number listed may be changed without notice
 - Notwithstanding, the only binding price and part number are those identified in FMSNA Inc.'s official offer
 - Parts listed may be subject to U.S. export controls and subject to licensing if exported outside of the U.S.

May 2018 Diesel Engine Parts List

72744F01	SHIM	27.83
72793F01	HOOK, LIFTING	267.79
72797F01	LEVER	469.51
728/15	IMPACT ADAPTOR 3/4"-1/2" DRI	70.43
728481645U01	NUT	59.66
72896F01	COVER	1398.09
728L	IMPACT SOCKETS LONG SERIES	136.51
72904F01	NIPPLE	36.00
72937F01	PIN	137.81
72969F92	OIL NOZZLE-ASSEMBLY	52.36
73088F01	SEALING RING	4.41
73102F01	HOSE	16.56
73104F01	HOSE	65.00
73110F01	WATER HOSE	44.00
731111032U01	INSERT SCREW THREADED	2.17
73152F01	HOLDER TUBE	539.06
73171F95	CRANKCASE-ASSEMBLY	215981.82
73173F02	CAP	2260.57
73174F02	CAP	2956.13
73175F02	CAP	2956.13
73176F91	OIL DISCHARGE TUBE	213.72
73190F01	SLOTTED RING NUT	53.43
73199F91	TEE SPECIAL,TUBE	120.90
73213F03	EXHAUST TEE	3943.83
73217F91	OIL TUBE	426.37
73218F03	ADAPTOR	5298.49
73219F01	FLANGE	163.46
73223F91	OIL TUBE	1236.33
73227F04	FLANGE	359.12
73231F91	OIL TUBE	1898.88
73239F01	WATER MANIFOLD	963.35
73240F01	WATER MANIFOLD	1076.38
73242F01	SPACER	60.55
73245F01	TEE,TUBE	99.93
73250F01	SPECIAL NUT	10.69
73251F91	TOOTHED PULLEY	356.20
73253F01	TOOTHED PULLEY	2558.36
73254F02	RH SUPPORT	106.86
73255F02	LH SUPPORT	106.86
73269F91	REGULATOR VALVE-ASSEMBLY	676.78
73272F01	RH CAMSHAFT	10097.87
73276F01	BRACKET	73.03
73278F01	IMPELLER	869.88
73279F01	HOUSING	801.45
73292F01	GEAR	1419.81
73295F92	RELIEF VALVE-ASSEMBLY	1107.54
73298F01	LH CAMSHAFT	9677.12
73300F01	FLYWHEEL RING GEAR	9395.74
73301F01	CROSS-HEAD	596.44
73302F93	BRACKET-ASSEMBLY	2187.54
73304F93	ROCKER ARM-ASSEMBLY	574.70
73310F92	CONNECTING ROD-ASSEMBLY	5772.58
73312F94	CRANKSHAFT-ASSEMBLY	87743.16
73313P95	DUPLEX OIL PUMP-COMPLETE	9795.52
73328F01	HOSE	98.24
733413138U01	PLAIN WASHER	6.70
73351F01	HOSE	87.82
73354F01	PLUG	8.70
73356F01	SPECIAL PLUG	146.07
73357F01	SPECIAL PLUG	26.86
73358F01	COVER	132.47
73359F01	PORT COVER	86.48
73364F91	OIL FILLER STRAINER	172.78
73365F92	CAP, FILLER	113.03
73368F92	CRANKCASE BREATHER-ASSY	737.29

- Price and part number listed are valid for the North America market only
 - Price and part number listed may be changed without notice
 - Notwithstanding, the only binding price and part number are those identified in FMSNA Inc.'s official offer
 - Parts listed may be subject to U.S. export controls and subject to licensing if exported outside of the U.S.

May 2018 Diesel Engine Parts List

733691645U01	WASHER, COPPER	0.94
73369F01	PLUG, EXPANSION	6.09
73385F01	HOUSING SPRING	156.50
73386F01	PLUG, HOUSING	29.57
73387F01	PLUNGER, SPRING	70.66
73388F01	PLUG	13.36
73398F91	NOZZLE-ASSEMBLY	314.17
73402F01	FLUID PASSAGE BOLT	31.17
73403F91	OIL TUBE	121.11
73407F91	PEDESTAL-ASSEMBLY	358.80
73413F01	FLUID PASSAGE BOLT	53.43
73417F91	PUMP, PRIMING	349.59
73428F01	LEVER	343.75
73433F02	ROD	35.62
73447F01	FLANGE	151.39
734542156U01	LOCK WASHER	2.09
73485F01	CROSSHEAD--MHC	725.12
73487F01	COVER	103.30
73500F91	CYLINDER FUEL TUBE	591.23
73501F91	CYLINDER FUEL TUBE	591.23
73502F91	CYLINDER FUEL TUBE	591.23
735033138U01	RETAINING RING	4.45
73503F91	CYLINDER FUEL TUBE	591.23
73504F91	CYLINDER FUEL TUBE	591.23
73505F91	CYLINDER FUEL TUBE	591.23
735063075U01	SNAP RING	2.61
73510P02	BUSHING	173.89
73512P02	LEVER, REMOTE CONTROL	182.59
73519F92	FRONT COVER-ASSEMBLY	8441.25
73521F01	COVER	153.65
73522F91	REAR COVER-ASSEMBLY	1379.82
73524F01	COVER	478.20
73527F01	CLAMP	36.51
73528F91	INTAKE MANIFOLD-ASSEMBLY	2137.20
73529F91	INTAKE MANIFOLD-ASSEMBLY	1866.49
73530F93	RH EXHAUST MANIFOLD-ASSY	8738.85
736010439U01	COTTER PIN	1.91
73604F93	LH EXHAUST MANIFOLD-ASSY	8738.85
73605F01	FLANGE	73.59
73612F93	WATER MANIFOLD-ASSEMBLY	1640.34
73614F94	HOUSING-ASSEMBLY	2522.00
73616F92	RH HOUSING-ASSEMBLY	2476.50
73617F92	LH HOUSING-ASSEMBLY	4127.71
73619F02	RH PEDESTAL	3895.14
73620F01	LH PEDESTAL	1263.33
73621F02	HOUSING	311.90
73623F01	ADAPTOR, RAW WTR PUMP	7292.95
73626F01	COVER	122.29
73627F92	PEDESTAL-ASSEMBLY	819.26
73628P93	OVERSPEED DEVICE	9253.18
73640F01	FLANGE	296.38
73673F01	ENGINE STAND (SET OF 4)	2570.80
73692F01	SCREW	25.20
73711F01	TUBULAR,DOWEL	35.62
73718F01	SPACER	149.60
73727F01	SPACER	44.53
73778F01	SLEEVE	471.97
73780F01	EXPANSION PLUG	48.09
73781F01	EXPANSION PLUG	53.43
73783F01	SETSCREW	46.95
73784F01	PIN HOLLOW	37.04
73786F02	PIN,DOWEL	50.21
73787F91	CLAMP	34.20
73802F91	CLAMP	183.44
73806F01	SPACER, SLEEVE	137.38

- Price and part number listed are valid for the North America market only
 - Price and part number listed may be changed without notice
 - Notwithstanding, the only binding price and part number are those identified in FMSNA Inc.'s official offer
 - Parts listed may be subject to U.S. export controls and subject to licensing if exported outside of the U.S.

May 2018 Diesel Engine Parts List

738430624U01	PLUG A 101033-06	5.22
738430827U01	CAP	5.66
738432566U01	CAP	13.98
738462566U01	CORE PLUG	410.38
738911032U01	PLUG	2.42
73980F91	CROSS TEE,TUBE	84.19
74048F01	WATER SEAL RING	25.86
741094843U01	KEY	85.21
741241032U01	PARALLEL KEY	6.76
741251188U01	PARALLEL KEY	7.66
741750426U01	KEY 2 X 3.7	2.44
741751008U01	KEY, 4X5 UNI 6606	8.35
742091651U01	DOWEL PIN	4.00
742200689U01	SPIRAL PIN	8.23
742201639U01	SPIRAL PIN	3.03
742210708U01	PIN ROLL	0.42
742211045U01	DOWEL PIN	2.67
742461301U01	PIN	4.27
742462109U01	DOWEL PIN	2.07
742462118U01	PIN	3.13
742462924U01	DOWEL PIN	80.08
74348F01	STUB	147.81
74395F01	RETAINER	284.96
74402F91	DRAIN TUBE	206.93
744100563U01	RIVET 2.5X5	1.74
74433F93	OIL DIPSTICK GUIDE	1306.90
74434F93	AIR STARTING MOTOR	19457.42
74437F02	WATER INLET MANIFOLD	619.92
74438F04	COVER	817.29
74442F01	TUBULAR,DOWEL	31.30
74445F01	PLATE, LOCKING	43.89
74449F91	TURBINE WHEEL	9785.06
74450F01	SHIM	133.58
745161031U01	RIVET	45.22
74528F01	FLANGE	320.58
74529F01	FLANGE	320.58
74533F01	O-RING 2-222, S604-70	1.31
74534F01	O-RING 2-329, S604-70	2.17
74539F01	INSTALLER, BEARING ASSEMBLY	177.07
74553F01	O-RING	4.05
74554F02	WATER OUTLET ELBOW	472.98
74555F91	WATER TUBE	650.07
74556F92	PRE-HEATING TANK-ASSY	3056.20
74558F91	WATER TUBE	650.07
74559F01	EXPANSION PLUG	7.10
74560F01	WATER ELBOW	662.32
74561F01	WATER ELBOW	1646.59
74564F01	O-RING	2.40
74589F01	WATER TEE	311.68
74590F01	STUB	231.53
74591F02	FLANGE	80.15
74630F92	RELAY VALVE	1961.51
74631F91	PUSH BUTTON	139.98
74632F91	STRAINER, AIR	153.98
74633F91	VALVE SOLENOID	929.81
74641F01	BRACKET	25.21
74647P01	SHAFT PRE-DEPERMING	258.25
74648F91	NUT, HEXAGON CAP	65.21
74651F92	RH AIR ELBOW-ASSEMBLY	658.97
74652F92	LH AIR ELBOW-ASSEMBLY	605.54
74653F91	THERMOWELL	304.31
74656F01	TUBULAR,DOWEL	199.98
74658F01	EXPANSION PLUG	4.45
74660F93	BARRING DEVICE-ASSEMBLY	4006.43
74660P93	BARRING DEVICE-ASSEMBLY	4006.43

- Price and part number listed are valid for the North America market only
 - Price and part number listed may be changed without notice
 - Notwithstanding, the only binding price and part number are those identified in FMSNA Inc.'s official offer
 - Parts listed may be subject to U.S. export controls and subject to licensing if exported outside of the U.S.

May 2018 Diesel Engine Parts List

74661F93	HOUSING-ASSEMBLY	445.14
74663F01	COVER	120.96
74664F01	COVER	125.60
74667F01	WASHER,SPECIAL	34.78
74669F01	SPLIT BUSHING	20.87
74674F01	SPACER	165.97
74714F93	AIR LUBRICATOR	2373.60
74722F91	CHECK VALVE	304.31
74723F01	SPECIAL WASHER	20.00
74731F91	NIPPLE	125.98
74737F95	FLYWHEEL HOUSING -ASSY	12146.22
74741F92	OIL TUBE	356.20
74743P91	VALVE	320.58
74745F01	GASKET	19.13
74747F91	THREE WAY BALL COCK	377.34
74768P91	PRESSURE RELIEF VALVE	98.39
74775F01	ORING	18.00
74779F01	RING,SNAP	3.13
74786F91	EMERGENCY STOP HOUSING	7127.76
74788F01	SPECIAL WASHER	26.72
74791F01	COVER	204.82
74792F91	BELLOWS - ASSEMBLY	3114.37
74793F91	BELLOWS	812.96
74794F01	PIN	72.16
74795P01	SPRING	165.63
74797F91	COVER-ASSEMBLY	302.77
74800F01	CAP NUT	50.75
74805F01	YOKE	299.89
74807F01	SPLIT BUSHING	8.84
74809F01	TURNBUCKLE BARREL	75.16
74810F01	PIN, THREADED	20.00
74811F01	SPECIAL BOLT	48.69
74812F92	THERMOCOUPLE	1354.61
74813F01	SET SCREW	0.68
74816F01	SPACER	16.52
74817P01	SPRING	106.08
74825F93	FILTER, CENTRIFUGAL OIL	2694.20
74841P95	FUEL FEED PUMP-COMPLETE	5101.50
74852F93	OIL PAN ASSY	10898.56
74854F01	PLUG	26.89
74859F02	RH TEE	534.30
74860F01	LH ELBOW, EXHAUST WTR OUT	270.77
74868P02	GOVERNOR DRIVE COUPLING	445.25
74877F01	REAR COVER	1072.59
74878F01	COVER	721.20
74879F01	ROD	33.84
74880F01	ROD	60.55
74881F01	PLUNGER	142.48
74885F01	SHAFT	111.19
74904F91	LEVER-ASSEMBLY	723.38
74914F01	OIL COOLER WATER SIDE GASKET	33.91
74918F01	PLUG	17.99
74922F92	PIN THREAD	75.12
74924F01	O-RING	10.43
74925F01	GASKET	5.22
74934F01	COVER	171.98
74938F91	VENT TUBE	310.29
74944F91	TUBE	150.98
74945F91	OIL TUBE	238.65
74946F91	OIL TUBE	156.79
74947F91	OIL TUBE	156.79
74948F91	90° ELBOW,TUBE	206.93
74955F01	GASKET, OIL PAN	134.76
74959F91	TEE, TUBE	267.10
74960F91	FUEL TUBE	192.35

- Price and part number listed are valid for the North America market only
 - Price and part number listed may be changed without notice
 - Notwithstanding, the only binding price and part number are those identified in FMSNA Inc.'s official offer
 - Parts listed may be subject to U.S. export controls and subject to licensing if exported outside of the U.S.

May 2018 Diesel Engine Parts List

74962F91	CROSS, FLANGE TUBE	302.57
74965F91	90° ELBOW,TUBE	268.22
74966F91	FUEL TUBE	233.76
74967F91	PRIMING PUMP PIPE	288.52
74969F91	FITTING,TUBE	135.22
74972F91	FUEL TUBE	247.56
74973F92	OIL TUBE	187.01
74974F91	TEE,TUBE	142.48
74986F02	SPACER	28.50
75011P01	SPRING	158.51
75043F91	OIL DIPSTICK GUIDE	293.87
75044F01	GASKET	11.22
75045F91	90° ELBOW,TUBE	160.29
75053F01	GEAR	440.84
75054F01	GEAR	440.84
75083F02	BUSHING	43.01
75084F92	SHAFT-ASSEMBLY	944.68
75085F01	LEVER STOP	146.07
75086F01	PIN, LEVER STOP	18.99
75088F91	TUBE	919.88
75091F01	SHAFT	170.72
75092F01	GEAR	872.69
75096F01	SPRING	36.52
751024472U01	BALL BEARING	204.98
75119F91	BRACKET	118.31
751201747U01	BALL BEARING	23.98
751203075U01	BEARING,BALL,ANNULA	32.66
75120F91	CLAMP	34.59
75127F91	BREATHER, CRANKCASE UPPER SEC	408.64
75129F91	NIPPLE,TUBE	411.95
751302566U01	BALL BEARING	182.59
751303198U01	BALL BEARING	79.59
751303683U01	BALL BEARING	146.07
75130F91	TEE,TUBE	331.27
75131F91	NIPPLE,TUBE	185.54
75132F91	NIPPLE, TUBE	308.83
75134F91	AIR TUBE	213.46
75135F91	FITTING	82.55
75136F91	AIR TUBE	189.87
75137F91	AIR TUBE	210.59
75169F91	PLUG, MACHINED THREAD	13.15
75184F91	VALVE	151.39
75189F01	BRACKET, EXHAUST TEE LH UPPER	100.86
75192F91	GUARD	607.77
75194F01	BOLT, DRILLED HEAD	40.06
75199F92MOD5	OIL DIPSTICK	292.60
75202F91	INJECTOR COMPLETE	432.55
75251F01	WASHER,SPECIAL	6.09
75289F01	SPRING WASHER	17.39
75291F01	NUT FOR SECURING CYLINDER HEAD COVER	18.47
75328F01	POINTER, DIAL	30.00
75377F01	SHAFT	85.21
75378F91	LEVER	140.25
75379F01	SHAFT	24.26
75380F01	ROD	201.72
753812566U01	BALL BEARING	168.67
75381F91	LEVER	187.01
75382F01	ROD	57.38
75383F01	RH ADJUSTING ROD	93.50
75384F01	FORK	401.69
75385F91	AIR TUBE ASSY	3943.83
75386P01	PINION	1478.71
75389F91	LEVER	253.01
75452F91	SHIELD RH	3784.63
75453F91	SHIELD LH	3793.54

- Price and part number listed are valid for the North America market only
 - Price and part number listed may be changed without notice
 - Notwithstanding, the only binding price and part number are those identified in FMSNA Inc.'s official offer
 - Parts listed may be subject to U.S. export controls and subject to licensing if exported outside of the U.S.

May 2018 Diesel Engine Parts List

75454F91	SHIELD	6236.37
75455F91	FLANGE, HEAT SHIELD	477.31
75462F01	CHAIN, ROLLER	24.21
75470F01	CLAMP, SINGLE FUEL LINE	126.69
75471F01	CLAMP	26.72
75486F01	PLUG	22.61
75490F91	ELEMENT, OIL FILTER	30.30
75492F01	RETAINER, SPRING	375.60
75493F01	SPRING	645.13
75495F91	CLAMP	516.49
75496F91	OIL FILTER SHELL	498.68
75497F91	COVER	1544.13
75508F91	PICK-UP	641.16
75520F91	COVER-ASSEMBLY	571.70
75523F91	ELECTROVALVE	1440.37
75526F91	BOX MOUNTING RECEPTACLE	89.99
75654F91	CYLINDER FUEL TUBE	849.89
75663F01	BRACKET	48.69
75664F01	BRACKET	26.72
75665F01	BRACKET	99.83
75666F91	CLAMP	30.35
75667F91	CLAMP	43.48
75674F91	BRACKET	161.76
75675F01	MOUNTING BRACKET	16.52
75677F91	VENT TUBE	172.76
75678F91	TUBE, WATER	255.61
75686F91	TEE, TUBE	286.46
75690P91	THERMOSTAT	29.56
75725F93	AIR SHUT-DOWN VALVE	3388.95
75732F91	ELECTROVALVE	694.59
757403380U01	STRAIGHT ROLLER BEARINGS	170.42
75747F91	BRACKET	367.78
75749F01	SPECIAL WASHER	18.70
75756F91	TEE, TUBE	319.78
75757F91	NIPPLE, TUBE	80.15
75758F91	NIPPLE, TUBE	391.25
75768F91	BAR-ASSEMBLY	187.80
757912566U01	BEARING, BALL	280.83
75802F01	SPHERICAL ROD END-MALE	156.73
75831F01	COVER	206.60
75980F01	SUPPORT	452.12
75985F01	RING	309.53
75986F01	RING	683.91
75991F01	WATER OUTLET ELBOW	581.70
76035F01	BOLT, SPECIAL	43.48
76036F01	BOLT	267.15
76037F01	BOLT	103.03
76038F01	BOLT	113.35
76039F01	BOLT, SPECIAL	314.88
76047F91	CYLINDER FUEL TUBE	665.65
76048F91	CYLINDER FUEL TUBE	587.73
76049F91	CYLINDER FUEL TUBE	665.65
76050F91	CYLINDER FUEL TUBE	665.65
760557637U01	BEARING, ROLLER, NEED	69.02
76066F91	OIL TUBE	400.73
76067F91	90° ELBOW, TUBE	51.65
76068F92	OIL TUBE	222.63
76069F91	OIL TUBE	643.40
76070F91	OIL TUBE	602.16
76071F91	OIL TUBE	798.16
76072F91	OIL TUBE	469.51
76087F91	BEHR OIL COOLER	9435.28
76088F91	CLAMP	9.12
76090F91	OIL COOLER HOUSING-ASSY	4210.92
76091F92	OIL COOLER-COMPLETE	30460.97

- Price and part number listed are valid for the North America market only
 - Price and part number listed may be changed without notice
 - Notwithstanding, the only binding price and part number are those identified in FMSNA Inc.'s official offer
 - Parts listed may be subject to U.S. export controls and subject to licensing if exported outside of the U.S.

May 2018 Diesel Engine Parts List

76118F01	VALVE	57.19
76125F01	RING,NUT	34.71
76155F01	VALVE GUIDE	73.04
76187F01	BRACKET	17.39
76201F01	PLATE, CLAMP MOUNTING	67.82
76207F01	GASKET	131.97
76208F01	GASKET	118.25
76256F02	STUD,SPECIAL	32.40
762661850U01	SHOULDER RING	8.46
76312F01	OIL SEAL	1229.41
76440F01	COUPLING, SHEAR POINT	3936.87
76457F91	NOZZLE AND HOLDER-ASSY	897.28
76491F95	CRANKSHAFT-ASSEMBLY 8V	67508.88
76501F92	REAR COVER ASSEMBLY	2359.69
76503F92	PAN ASSEMBLY, OIL	10798.57
76536F01	GEAR	723.73
76537F01	GEAR	578.83
76649F91	OIL SEAL RING	179.43
76673F91	DOUBLE FILTRATION OIL FILTER	141.59
76699F91	THERMOSTAT	306.75
76780F01	TOOTHED RIM	5132.92
76849F01	SPRING	97.38
76878F01	GOVERNOR DRIVEN GEAR	2863.22
76883F01	SHIM	328.66
76887F01	ORING	1.46
76888F01	ORING	4.35
76889F01	O-RING 151 SP3	10.35
76891F92R	FLYWHEEL KIT 8V-AM-103601113	22650.26
76921F01	SPECIAL NUT	31.74
76935P01	BUSHING	217.37
76939F91	VIBRATION DAMPER	15996.14
76940P01	RING	1110.51
76943F92	GOVERNOR DRIVE-ASSEMBLY	8014.51
76946F93	OIL TUBE ASSEMBLY	417.34
76961P01	SHAFT	623.35
76978F91	FUEL TUBE	269.97
76981F01	TEE,TUBE	86.95
76984F91	FUEL TUBE	117.99
76985F91	FUEL TUBE	677.91
76986F91	FUEL TUBE	143.98
76997F91	DRAIN PIPE	269.53
77008F91	PUSH ROD	79.99
77036F02	PIN	92.16
77037F01	PLUG,PIPE HX SOC M16X1.5	26.08
77064F91	PRELUBE OIL PRIMING PUMP	14604.22
77083F01	FLANGE	55.65
77197F01	GEAR	1335.75
77198F01	GEAR	979.55
77462F01	GASKET	44.26
77490F91	WATER COOLER	15118.00
77518F01	ELECTROLYTIC STRAP	59.12
77535F91	CYLINDER FUEL TUBE	637.92
77637F01	SEA WATER ELBOW	3808.19
77641F02	MANIFOLD	1325.05
77662F02	STUB	130.07
77670F01	CONNECTING STUB, 304 SS	284.00
77751F01	O-RING	3.88
77776F91	TEE, TUBE	111.99
77791F92	RH SUPPORT ASSY	2580.09
77792F92	LH SUPPORT-ASSEMBLY	1407.64
77793F91	MANIFOLD RH-ASSEMBLY	2427.51
77794F91	MANIFOLD LH-ASSEMBLY	2182.32
77819F02	INTAKE VALVE	396.47
77825F91	NOZZLE HOLDER	780.77
77826F91	NOZZLE	314.88

- Price and part number listed are valid for the North America market only
 - Price and part number listed may be changed without notice
 - Notwithstanding, the only binding price and part number are those identified in FMSNA Inc.'s official offer
 - Parts listed may be subject to U.S. export controls and subject to licensing if exported outside of the U.S.

May 2018 Diesel Engine Parts List

77946F02	SPECIAL STUD	11.58
77977F91	BEARING (TWO HALVES)	1385.90
77978F91	MAIN BEARING ASSEMBLY STD	931.53
78086F01	WATER MANIFOLD	619.05
78087F01	FLANGE	459.94
78088F91	WATER MANIFOLD-ASSY	1063.52
78115F02	CYLINDER LINER	4458.54
78160F02	O-RING	69.56
781662156U01	NIPPLE	78.25
78209F01	PLUG	273.01
78210F01	FLANGE	620.79
78225F02	GASKET	15.65
78227F01	GASKET, PURGE VALVE	15.65
78396P91	PISTON	2956.13
78416P01	PRE DEPERMING SPRING	35.85
78417F01	PIN, LEVER STOP	78.25
78422F01	PIN	36.00
78423F01	DISC SPRING	79.98
78425F91	JOINT-ASSEMBLY	730.34
78429F91	AIR SHUT-DOWN VALVE	6466.97
78430F01	PIN SEAT	365.29
78432F01	PIN	646.87
78435F01	SPACER	23.15
78436F01	LH ROD	126.07
78438F01	KNOB	46.02
784441645U01	NIPPLE,TUBE	222.95
784472902U01	NIPPLE, TUBE	62.60
784474083U01	NIPPLE, TUBE	15.06
784490613U01	ELBOW	175.76
784490813U01	90° ELBOW	324.14
784490817U01	90° ELBOW	217.35
784521237U01	90° ELBOW	110.42
784521645U01	90° ELBOW	156.81
784523584U01	90° ELBOW	178.99
784524635U01	90° ELBOW	820.47
784581032U01	90° ELBOW	67.68
784582575U01	90# ELBOW	191.68
784622054U01	90° ELBOW	185.80
784641237U01	UNION	5.01
78464F91	PISTON-ASSEMBLY	3342.59
784650827U01	UNION CROSS	85.66
784730610U01	90# ELBOW	11.27
784811645U01	UNION TEE	31.01
784871621U01	TEE,TUBE	52.00
784880610U01	UNION	4.59
785260624U01	NIPPLE,TUBE	104.33
785280613U01	NIPPLE, TUBE	129.97
785280827U01	SS ADAPTOR	104.40
785310610U01	90° ELBOW	201.12
785371032U01	45° ELBOW	103.70
785450610U01	TEE,TUBE	151.39
785610610U01	TEE TUBE	48.50
785761032U01	NIPPLE, TUBE	229.94
78589F01	GASKET	31.72
78664F01	GASKET	81.77
78667F01	CYLINDER LINER	871.03
78675F91	OIL SEAL	292.77
78704F91	WOODWARD GOVERNOR CONNECTOR	686.00
78705F91	R.V.D.T. CONNECTOR	1155.24
78706F91	CONNECTOR, GOVERNOR PICK-UP	401.69
78742F02	CYLINDER HEAD GASKET	445.25
78743KIT	CYLINDER HEAD GASKET KIT	570.68
78743KIT-8	CYLINDER HEAD GASKET KIT	530.11
78965F01	SPRING	42.79
79007F91	TURBOCHARGER EXHAUST TEE AY	6228.74

- Price and part number listed are valid for the North America market only
 - Price and part number listed may be changed without notice
 - Notwithstanding, the only binding price and part number are those identified in FMSNA Inc.'s official offer
 - Parts listed may be subject to U.S. export controls and subject to licensing if exported outside of the U.S.

May 2018 Diesel Engine Parts List

79008F01	RING	400.73
79009F02	FLANGE, SEAL RING	347.78
79010F01	SEAL RING	245.18
79012F01	GASKET	102.60
79015F01	STUB	249.97
79025F91	TURBOCHARGER"GARRETT"ASSY	11184.70
79039F91	THERMOSTATIC VALVE	320.58
79230F01	PLUG, SPECIAL	147.81
79234F01	STEM	351.31
79235F01	BUSHING	93.03
79237F01	NUT	26.08
79243F91	BOSCH-ZWMINJECTION PUMP	53836.34
79262F01	LEVER	64.12
79308F91	INJECTION PUMP	102952.62
79331F91	FLEXIBLE COUPLING	91462.66
79365F01	FLANGE	146.07
79367F91	FLANGE	210.41
79372F92	EXPANSION TANK-ASSEMBLY	3885.26
79490F91	HOUSING-ASSEMBLY	4986.81
79491F91	FUEL TUBE	361.60
79549F91	PRESSURE REDUCING VALVE	314.35
79575F91	NON-RETURN VALVE	84.54
79601F01	IMPELLER	566.82
79676F01	SEAT INSERT,EXHAUST VALVE	65.25
79729F91	FEED PUMP BODY-ASSEMBLY	894.06
79820F91	VENT COCK	224.41
79830F91	CENTRAL MAIN BEARING	1592.45
79942F93	HOUSING-ASSEMBLY	4612.80
79944F02	BUSHING	138.92
79945F91	COVER-ASSEMBLY	128.42
79948F91	ROTOR-ASSEMBLY	655.41
79950P01	PIN	199.97
79955F01	SCREW	31.94
79956F01	COVER	221.94
79957F91	FORK-ASSEMBLY	641.16
79959P01	PIN PRE-DEPERMING	199.97
79960P01	PIN PRE-DEPERMING	356.20
79961P02	PREDERMED PIN	356.20
79962P02	LEVA PRE-DEPERMING	589.49
79964F92	HYDR CONT V HOUSIN-ASSY	1691.95
79967F02	GASKET	17.81
79968P01	PISTONE PRE-DEPERMING	862.39
79970F01	SPRING	77.98
79972F02	FLANGE	128.23
79998F91	CONNECTING ROD BEARING	998.13
8001B3	ANODE, 1" THICK x 3" DIAMETER	293.38
8001B4	ANODE, PUSHROD PIN	489.56
812A01	ROTATABLE TEST STAND	142124.04
820015104F91	PRESSURE SWITCH 14 BAR	1519.80
820056500F91	ARMORED RESISTANCE	902.97
824902240F91	TEMPERATURE SWITCH	1501.80
824902391F91	TEMPERATURE SWITCH	1781.77
824902497F91	HEATER	651.18
824902498F91	HEATER	1380.69
824902499F91	PRESSURE SWITCH	1297.83
9310000220R	SEAL,PLAIN ENCASED	2003.21
936003F91	ID36SS12V GASKET KIT	1640.21
936007F91	ID36SS12V SEAL RING KIT	2514.99
936583804U01	PACKING RING	2.40
937593380U01	PACKING	3.54
937695206U01	OIL SEAL	30.47
937703240U01	OIL SEAL RING	22.08
937706522U01	SINGLE LIP	10.53
93775238U01	SEAL RING	29.72
938273252U01	O-RING	0.38

- Price and part number listed are valid for the North America market only
 - Price and part number listed may be changed without notice
 - Notwithstanding, the only binding price and part number are those identified in FMSNA Inc.'s official offer
 - Parts listed may be subject to U.S. export controls and subject to licensing if exported outside of the U.S.

May 2018 Diesel Engine Parts List

938273543U01	O-RING	1.52
938273639U01	O-RING	1.20
938273834U01	O-RING	0.87
938273931U01	O-RING	1.36
938274294U01	O-RING	1.06
938274401U01	O-RING	2.73
938283252U01	O-RING	1.00
938284045U01	O-RING	2.26
938284240U01	O-RING	1.48
938284320U01	O-RING	1.05
938284335U01	O-RING	1.04
938284348U01	O-RING	12.43
938284362U01	PACKING PREFORMED	1.55
938284376U01	O-RING	9.65
938284455U01	O-RING	7.83
938284663U01	O-RING	2.40
938284915U01	O-RING	1.41
938285134U01	O-RING	8.26
938287122U01	O-RING	2.08
938294511U01	O-RING	4.00
938294644U01	O-RING	9.76
938333537U01	O-RING	2.24
938345416U01	O-RING	24.07
93900001210R	SEAL,PLAIN	1599.79
941090030U01	DETERGENT BIODEGRADABLE	15.14
958423380U01	HOSE	52.61
975095656U01	GASKET	77.99
98047F01	SHAFT,CLUTCH	15405.68
98061F91	COOLER SUPPORT	10153.94
98092F01	LEVER	623.35
98125F01	BUSHING	643.40
98126F01	BUSHING	213.72
98144F01	GASKET	5.16
98147F01	ADAPTOR RING	8748.84
98148F01	RING NUT	412.99
98149F01	RING NUT	233.90
98153F01	GASKET	41.47
98154F01	KEY	83.23
98155F01	TOOTHED RING	682.04
98156F91	FORK-ASSEMBLY	858.09
98157P91	CLUTCH "TWIN DISC-F314"	5254.00
98191F01	ANODE HOUSING	2618.07
98194F91	AIR CYLINDER "PARKER"	1959.10
98195F91	DUMP VALVE	7364.24
98235F01	OIL HEADER	819.26
98301F91	QUICK COUPLING DUST PLUG	238.06
98362F01	HUB FOR FLANGE	13357.52
98371F01	NUT	26.72
98372F01	WASHER	2.85
98373F01	LUBRICATING NIPPLE	6.06
98397F91	CRANK CONNECTION	119.33
98401F01	BUSHING	222.63
98405F01	STUD	82.28
98900001100R	BEARING,BALL ROLLER	7.05
98900001140R	PIN,LOCK	752.30
990R1236128O	ZINC ANODES ARRANGEMENT	3631.94
99R01271768O	SLIDE	767.90
99R01272278O	ADJUSTMENT RING	1199.85
99R01272298O	BUSHING,MAIN	23039.05
99R01272308O	GASKET	2586.02
99R01272318O	GASKET	3173.75
99R01273238O	CAM	1010.90
99R01273268O	PISTON	481.94
99R01273278O	CYLINDER	893.35
99R01273528O	PIN,STRAIGHT,HEADED	2774.09

- Price and part number listed are valid for the North America market only
 - Price and part number listed may be changed without notice
 - Notwithstanding, the only binding price and part number are those identified in FMSNA Inc.'s official offer
 - Parts listed may be subject to U.S. export controls and subject to licensing if exported outside of the U.S.

May 2018 Diesel Engine Parts List

99R01273548O	KEY	1559.80
99R01273558O	HALF RING	1271.84
99R01273698O	HALF RING	2399.69
99R01273728O	RETAINING PIN	114.56
99R01273738O	HALF RING	89.99
99R01273898O	HALF RING	1687.72
99R01273908O	HALF RING	899.88
99R01273978O	PIN,STRAIGHT,HEADED	2774.10
99R01274148O	MAIN BUSHING	28211.09
99R01274748O	GASKET	159.98
99TG0125473O	BALL,BEARING	32912.94
99TG0125477O	TRACTION BUSHING	21863.59
99TG0128796O	NEW TITANIUM HEAT EXCHANGER	18780.12
99TR30832X8O	SWITCH ANGLE INDICATION 32--0--32	176.54
99TR3247403O	ANODE, ZINC, F-1	35.26
99TR3247407O	ZINC ANODE 050x30mm THREAD M16x20	47.02
99TR33004X8O	VALVE, DRIVING	1716.17
99TR33974XXO	CARD, ELECTRONIC	5994.86
99TR3432201O	TRANSDUCER,MOTIONAL	1645.65
99TR3432202O	ROD	309.96
99TR3432205O	CONROL BOARD LINEAR TRANSDUCER	2491.98
99TR3434201O	ANODE, ZINC, FX-10	399.66
99TR3434202O	ANODE, ZINC, FX-4	164.56
99TR34480XXO	CENTERING VALVE	839.89
A17075-12	BEARING,SLEEVE	22.70
A17075-4	BEARING,SLEEVE	25.70
AEM110RE031	R450F VOLTAGE REGULATOR	1587.62
AL6H-P4P-R	PILOT, LIGHT	30.17
ALT491KB001	DOUBLE BEARING KIT	2722.26
ALT491KD002	DIODES CRESECENTS KIT	801.45
ALT491KO009	FRONT PANEL KIT	340.64
ALT491KO010	TOP COVER KIT	208.27
ALT491KO014	REAR PANEL KIT	317.70
ALT491KO016	SIDE PANEL KIT, LSA 491	155.34
ALT491KV001	49.1 AIR INLET FILTER KIT	3419.53
ALT491LJ001	O-RING FOR LSA 491	114.77
AM000RE125	O-RING FOR LSA 491	134.86
B40/16	GASKET	2.71
BTA-G11-0350	FEEDBACK ANALOG PROCESSOR	2491.98
C25SGSB15S	PRESSURE GAUGE, 5000psi	235.63
CAD323BD	CONTACTOR,MAGNETIC	132.79
CH-100-A25A	ELEMENT	190.33
CI-20	CLOGGED FILTER INDICATOR (LCS-1 ONLY)	69.94
CI1110M010	SURGE SUPPRESSOR	44.53
D0024004A	SCREW M4X40	1.00
D0024026A	SCREW M6X55	1.22
D0024032A	BOLT	1.08
D0024036A	BOLT M8X65 UNI 5737-AISI316 DI	3.48
D0024039A	SCREW M8X90 UNI EN 24010	7.83
D0024048A	BOLT	2.96
D0024087A	SCREW M16 X 70 A4-70	10.58
D0024201A	SCREW M4X25 UNI5737 8.8 ZN	2.35
D0024220A	BOLT	2.61
D0024222A	SCREW	2.61
D0024223A	SCREW M6X40	1.74
D0024225A	SCREW M6X50	0.26
D0024229A	SCREW M8X110	2.43
D0024231A	SCREW M8X40 TURBO SHIELD	2.61
D0024237A	SCREW	2.09
D0024238A	SCREW	2.09
D0024239A	SCREW M8X140 UNI 5737	2.82
D0024247A	BOLT	1.74
D0024249A	SCREW	2.38
D0024252A	SCREW M10X140	6.96
D0024254A	SCREW M10X160	3.43

- Price and part number listed are valid for the North America market only
 - Price and part number listed may be changed without notice
 - Notwithstanding, the only binding price and part number are those identified in FMSNA Inc.'s official offer
 - Parts listed may be subject to U.S. export controls and subject to licensing if exported outside of the U.S.

May 2018 Diesel Engine Parts List

D0024255A	BOLT	4.35
D0024260A	SCREW M12X70 UNI 5737	1.21
D0024277A	SCRW M14X110	3.48
D0024287A	SCREW M16X70	2.21
D0024431A	SCREW M8X40	1.22
D0024490A	SCREW	273.01
D0025028A	SCREW	1.22
D0025031A	SCREW M5X30	1.21
D0025043A	BOLT M6 X 20	1.74
D0025046A	BOLT M6 X 35	1.77
D0025056A	SCREW M8X16	0.94
D0025057A	SCREW M8X20	2.50
D0025058A	BOLT, MACHINE	1.03
D0025059A	BOLT, MACHINE	5.22
D0025074A	BOLT	2.23
D0025075A	BOLT	2.77
D0025077A	SCREW	3.04
D0025092A	BOLT	4.99
D0025106A	BOLT	4.87
D0025109A	BOLT	19.58
D0025124A	SCREW	7.08
D0025126A	SCREW M16X55	15.65
D0025241A	SCREW M6X12	2.61
D0025242A	SCREW	2.61
D0025243A	SCREW M6X20	2.61
D0025246A	SCREW	1.05
D0025256A	SCREW	2.61
D0025257A	SCREW	2.61
D0025258A	SCREW M8x25	4.35
D0025259A	SCREW M8X30	4.80
D0025261A	SCREW M8 X 40	0.94
D0025262A	SCREW M8 X 45	0.63
D0025263A	BOLT M8X50 CLAMP S/W BRACKET	1.74
D0025265A	SCREW M8X60	1.05
D0025266A	SCREW M8X65 UNI5739 8.8 ZN	2.14
D0025270A	SCREW	2.61
D0025274A	SCREW	2.61
D0025275A	SCREW	2.61
D0025292A	SCREW M12X30 UNI5739 8.8ZN	1.28
D0025293A	SCREW M12X35	3.48
D0025294A	SCREW M12X40	3.48
D0025295A	SCREW M12X45 UNI5739 8.8ZN	0.73
D0025300A	SCREW M12X70	1.81
D0025301A	SCREW M12X80	1.29
D0025306A	SCREW M14X30	4.35
D0025308A	SCREW M14X40	6.09
D0025312A	SCREW M14X60	1.74
D0025325A	SCREW	1.99
D0025326A	SCREW	2.61
D0025334A	VITE M16X120	8.05
D0025510A	SCREW M14X50	7.65
D0025524A	SCREW	4.35
D0026003A	STUD	8.69
D0026004A	STUD	9.56
D0026005A	STUD	17.39
D0026007A	STUD BOLT M8X1/M8X30	4.40
D0026026A	STUD	6.04
D0026029A	STUD	8.69
D0026035A	STULD BOLD	13.04
D0026059A	STUD	3.65
D0026060A	STUD	3.65
D0026063A	STUD	13.04
D0026064A	STUD	13.04
D0026205A	STUD, M8X1 X M8X25	16.24
D0026226A	DESD M10-1.5-1.25X42	20.26

- Price and part number listed are valid for the North America market only
 - Price and part number listed may be changed without notice
 - Notwithstanding, the only binding price and part number are those identified in FMSNA Inc.'s official offer
 - Parts listed may be subject to U.S. export controls and subject to licensing if exported outside of the U.S.

May 2018 Diesel Engine Parts List

D0026231A	STUD M10X1	29.91
D0026236A	STUD M10X1,25/M10X55	9.80
D0026261A	STUD M12X1.25/M12X60 UNI 5913	9.80
D0026263A	PN M12X1.25/M12X70 UNI 5913	9.80
D0026285A	PN M14X1,5/M14X50	162.07
D0027006A	PN M10X1,25X30	8.34
D0028207A	STUD	21.67
D0028213A	STUD M8x50 UNI 5916	26.84
D0029237A	BOLT	36.52
D0029615A	SCREW M10X1,25X20	2.61
D0029618A	M10X35 961-10.9 HCSY	0.96
D0029619A	SCREW	1.58
D0029715A	SCREW M10X1.25X20	27.77
D0030246A	SCREW	16.52
D0032124A	STUD M12X30	8.69
D0035007A	PN M8X1X30	8.83
D0035207A	PN M8X1X30 UNI5910 AISI316	9.13
D0039066A	SCREW	0.84
D0039088A	SCREW M8X16	0.35
D0039671A	SCREW	1.67
D0041050A	STUD	1.30
D0041054A	STUD BOLT M8X30 UNI 5911 8.8 ZN	8.92
D0041081A	STUD	15.45
D0041100A	STUD	9.10
D0041125A	PN M14X28 UNI 5911 8.8 ZN	22.61
D0041128A	STUD M14X35	14.26
D0041130A	STUD	13.15
D0041136A	PN M14X70 UNI 5911	13.91
D0041315A	PN M5X12	8.01
D0041316A	STUD M5X14	7.32
D0041330A	STUD M6X14	48.90
D0041331A	STUD M6X16	21.77
D0041348A	PN M8X16	104.54
D0041376A	STUD BOLT	7.93
D0041377A	STUD	22.80
D0041382A	STUD M10X50 UNI 5911	10.17
D0041419A	STUD M12X115	24.34
D0041678A	BOLT	26.40
D0048059A	SCREW M8X20	2.61
D0048064A	SCREW	1.34
D0048109A	SCREW M12 X 30	4.00
D0048141A	HEX SOCKET CAP SCREW	32.87
D0048253A	SCREW M4X12	2.35
D0048255A	SCREW M4X20	1.22
D0048260A	SCREW M4X45	1.74
D0048273A	SCREW M5X40	0.43
D0048283A	SCREW	1.74
D0048287A	SCREW M6X40 UNI5931 8.8 ZN	1.74
D0048291A	SCREW M6X60 UNI5931 8.8 ZN	1.74
D0048293A	SCREW M6X80	0.42
D0048298A	SCREW	2.61
D0048300A	SCREW M8X35	2.61
D0048301A	SCREW	2.09
D0048302A	SCREW	1.05
D0048303A	SCREW M8X50 UNI5931 8.8 ZN	2.61
D0048309A	HEX.SOCKET HEAD CAP SCREW	5.22
D0048315A	SCREW	1.05
D0048316A	SCREW M10X20 UNI5931 8.8ZN	1.13
D0048317A	SCREW M10X25 UNI5931 8.8ZN	1.74
D0048319A	SCREW M10X35 UNI 5931 8.8 ZN	1.05
D0048321A	SCREW M10 x 45 UNI 5931 8.8 ZN	0.82
D0048322A	SCREW M10 X 50 UNI EN ISO 4762	2.40
D0048323A	SCREW M10X55	1.22
D0048326A	SCREW M10X70	2.61
D0048335A	SCREW	0.87

- Price and part number listed are valid for the North America market only
 - Price and part number listed may be changed without notice
 - Notwithstanding, the only binding price and part number are those identified in FMSNA Inc.'s official offer
 - Parts listed may be subject to U.S. export controls and subject to licensing if exported outside of the U.S.

May 2018 Diesel Engine Parts List

D0048351A	SCREW TCEI M14X100	6.80
D0048550A	M6x50 8.8 HEX SKT HD CAP SCREW	1.29
D0048561A	SCREW M8X20	4.00
D0048693A	SCREW M24X180	23.48
D0048767A	BOLT, M5 X 12	0.60
D0048795A	CAP SCREW	1.67
D0048797A	SCREW M8 X 20	1.63
D0048798A	SCREW	2.02
D0048800A	SCREW M8X35	1.74
D0048803A	SOCKET HEAD CAP SCREW	4.00
D0048805A	SCREW	5.99
D0048817A	SCREW	3.90
D0048818A	SCREW, MACHINE	2.45
D0048819A	SCREW M10 X 35	3.52
D0048824A	SCREW	5.56
D0048831A	SCREW M8X120 UNI 5931	8.46
D0048837A	SCREW, HEX,M12x30	4.32
D0049362A	SCREW	34.83
D0050547A	SCREW UNI EN ISO 4762 M6X100	1.74
D0050564A	SCREWM8X90	2.61
D0050565A	SCREW M8X100	2.26
D0050567A	SCREW M8X120	2.17
D0050569A	SCREW	2.09
D0110003A	NUT	0.73
D0110004A	NYLOCK NUT	0.56
D0110005A	NUT M8 X 1	3.56
D0110009A	PREV.TORQUE HEX.NUT M12X1,5	2.37
D0110057A	NUT M10X1,25	2.80
D0111309A	M12 NUT	1.17
D0111406A	NUT M6	0.10
D0111407A	NUT M8	2.61
D0111411A	NUT M16	4.00
D0111506A	NUT M6	1.74
D0111507A	NUT M8 UNI 5588 ZN	2.61
D0111508A	HEXAGON NUT	1.74
D0111509A	NUT M12	2.61
D0111510A	NUT 14 UNI 5588 ZN	1.74
D0111513A	NUT	2.09
D0111607A	NUT M8	9.87
D0111656A	NUT M6	3.56
D0112158A	NUT M10	2.61
D0112357A	NUT M8X1	1.90
D0112358A	NUT M10X1,25	11.96
D0112360A	NUT, PLAIN, HEXAGON	6.09
D0112362A	NUT, HEXAGON	4.63
D0112369A	WASHER	53.20
D0112508A	HEXAGON NUT	1.74
D0112510A	NUT M14	1.74
D0114009A	NUT, M8 JAM	1.22
D0114013A	NUT M6	6.89
D0114014A	NUT	1.46
D0114015A	NUT M20	1.46
D0114208A	NUT	3.52
D0114215A	HEX NUT THIN SX	7.99
D0136003A	HEX. NUT M8	7.20
D0136004A	NUT	20.26
D0136005A	NUT M10X1.25	9.15
D0136010A	NUT M16	26.08
D0169002A	PLUG	5.85
D0170460A	PLUG M30X1,5	292.14
D0170475A	PLUG	60.00
D0171004P	SCREW PLUG	25.04
D0172001A	PLUG 1/8 GAS CILINDRICAL WITH ELASTOMER	3.48
D0174005A	PLUG	1.78
D0174006A	PLUG	4.35

- Price and part number listed are valid for the North America market only
 - Price and part number listed may be changed without notice
 - Notwithstanding, the only binding price and part number are those identified in FMSNA Inc.'s official offer
 - Parts listed may be subject to U.S. export controls and subject to licensing if exported outside of the U.S.

May 2018 Diesel Engine Parts List

D0174024A	PLUG M30X1.5 DIN 908	5.92
D0174052A	PLUG M12X1.5	3.08
D0174210A	TAPPO M24X1,5 DIN 908	18.00
D0174213A	PLUG	66.92
D0174224A	PLUG M30X1.5 DIN 908	118.49
D0175004A	PLUG G 1/4 DIN 908 5.8 ZN	6.23
D0175005A	PLUG G 3/8	10.43
D0175006A	HEX.SOCKET PIPE PLUG	7.83
D0175007A	PLUG	6.26
D0175008A	PLUG G 1	15.65
D0175021A	PLUG	4.59
D0175033A	PLUG	10.12
D0175106A	PLUG G 1/2 DIN 908	20.33
D0175107A	PLUG	23.44
D0175108A	PLUG	72.77
D0175110A	PLUG	106.91
D0175206A	Plug G 1/2	23.04
D0175210A	PLUG	105.71
D0177008P	PLUG G 3/4	24.70
D0177205P	HEX.HEAD CAP NUT	27.01
D0178123A	PLUG, HEX HD PIPE, BRASS	46.08
D0180015A	PLUG D=22	6.19
D0180021A	PLUG	10.00
D0180022A	CUP PLUG	11.38
D0180024A	CUP PLUG	9.57
D0180026A	CUP PLUG	3.86
D0185007A	RING NUT	30.28
D0188006A	PREVAIL.TORQUE RING NUT	15.11
D0188008A	PREVAIL.TORQUE RING NUT	16.40
D0201004A	WASHER	1.27
D0201005A	WASHER	2.61
D0201007A	WASHER 13 X 24	1.74
D0201009A	FLAT WASHER M-16	1.22
D0201105A	WASHER	1.98
D0201106A	FLAT WASHER	2.61
D0201108A	WASHER 15X28	1.00
D0201109A	WASHER	1.18
D0201110A	PLAIN WASHER	1.19
D0201111A	WASHER 21X37	0.82
D0201114A	PLAIN WASHER 28X50	4.54
D0201174A	WASHER	2.61
D0201175A	PLAIN WASHER M10	1.74
D0201204A	WASHER	0.23
D0201205A	WASHER	0.09
D0201206A	WASHER	1.20
D0201207A	WASHER	1.74
D0201208A	WASHER	0.61
D0201209A	WASHER	1.74
D0201211A	WASHER	3.27
D0201215A	WASHER	5.60
D0201274A	WASHER	1.74
D0201275A	WASHER	0.13
D0201400A	WASHER TYPE B	0.43
D0201404A	PLAIN WASHER TYPE "B" 13X24	5.52
D0203005A	WASHER	0.30
D0203006A	WASHER	2.50
D0203007A	WASHER	7.16
D0203008A	WASHER	3.60
D0203009A	WASHER	10.79
D0203013A	N63 WASHER	11.97
D0305029A	WASHER 25	3.21
D0307086A	TAB WASHER	8.70
D0307126A	LOCKTAB COOLING NOZZLE	4.79
D0311004A	LOCKWASHER	0.09
D0311005A	LOCK WASHER	4.43

- Price and part number listed are valid for the North America market only
 - Price and part number listed may be changed without notice
 - Notwithstanding, the only binding price and part number are those identified in FMSNA Inc.'s official offer
 - Parts listed may be subject to U.S. export controls and subject to licensing if exported outside of the U.S.

May 2018 Diesel Engine Parts List

D0311006A	LOCK WASHER	0.13
D0311007A	SPRING WASHER	1.78
D0311009A	SPRING WASHER	1.51
D0311010A	WASHER A17	1.21
D0311014A	SPRING WASHER	3.93
D0312003A	SPRING WASHER - 4	0.37
D0312007A	WASHER	1.78
D0315007A	SAFETY WASHER	2.44
D0315009A	SAFETY WASHER	2.44
D0321032A	COTTER PIN	1.74
D0329082A	SPRING PIN	8.01
D0330170A	SPRING PIN	1.74
D0330210A	SPRING PIN	4.35
D0330212A	SPRING STRAIGHT PIN DN4X24	2.50
D0330215A	PIN DN4X30	2.67
D0330218A	DOWEL PIN	12.18
D0330245A	DOWEL PIN	15.65
D0330293A	SPRING PIN	1.74
D0342002A	LOCK WASHER	2.01
D0342003A	LOCK WASHER	0.28
D0342004A	LOCK WASHER	0.39
D0342005A	LOCK WASHER M10	1.74
D0342006A	FLAT WASHER	0.61
D0342007A	SAFETY WASHER	4.44
D0342008A	M14 WASHER, INTERNAL TOOTH	2.61
D0342009A	LOCK WASHER	1.74
D0342013A	LOCKWASHER	2.25
D0342053A	WASHER	1.22
D0342054A	INTERNAL TOOTH LOCKWASHER M8	2.61
D0342055A	LOCK WASHER	5.02
D0343001A	CONICAL SPRING WASHER 4X0,7	1.00
D0343002A	CONICAL SPRING WASHER	2.01
D0343004A	SPRING WASHER 6X1,2 UNI8836	3.35
D0343006A	SPRING WASHER 8X1,4 UNI8836	1.74
D0343007A	ELASTIC WASHER	2.61
D0343008A	ELASTIC WASHER	3.48
D0343010A	SPRING WASHER 10X2,3 UNI8836	2.61
D0343013A	CONICAL SPRING WASHER	2.61
D0343015A	WASHER	2.61
D0343016A	SPRING WASHER 14 X 3	2.61
D0343017A	WASHER	1.74
D0343018A	ROSETTA EL.16X3,2 UNI8836	4.80
D0343020A	PIN	4.35
D0343023A	EL. WASHER 20X4,6 UNI8836	6.73
D0343027A	WASHER	6.59
D0345014A	SNAP RING	2.61
D0346012A	RING, SNAP	3.48
D0346019A	ELASTIC RING	1.51
D0346020A	RETAINING RING	3.39
D0346026A	RETAINING RING	2.14
D0346032A	SNAP RING	1.36
D0346034A	ELASTIC RING	2.42
D0346038A	RING,RETAINING	5.21
D0346041A	CIRCLIP	5.22
D0346045A	RING, SNAP	4.71
D0347005A	RETAINING RING	2.67
D0347008A	PISTON RING	2.40
D0347013A	RETAINING RING	2.61
D0347020A	RETAINING RING	3.48
D0347022A	SNAP RING	0.54
D0347023A	ELASTIC RING	1.99
D0348104A	SPRING WASHER 6,4	1.78
D0351377A	PARALLEL PIN	15.65
D0351400A	PIN	4.35
D0351479A	PIN	8.82

- Price and part number listed are valid for the North America market only
 - Price and part number listed may be changed without notice
 - Notwithstanding, the only binding price and part number are those identified in FMSNA Inc.'s official offer
 - Parts listed may be subject to U.S. export controls and subject to licensing if exported outside of the U.S.

May 2018 Diesel Engine Parts List

D0351646A	DOWEL	4.27
D0351679A	PIN (8M6X14 UNI 1707-X5 CRNI 1	7.82
D0351702A	PIN	3.69
D0366084A	SCREW	1.46
D0367010A	SCREW M4X5	1.22
D0367015A	SCREW M4X14	1.22
D0411019A	BALL	1.87
D0500017A	ADDED THREAD	3.50
D0500022A	ADDED THREAD	4.48
D0710009A	BALL BEARINGS	12.52
D2005012A	KEY	3.91
D2005013A	WOODRUFF KEY	3.31
D2005014A	SHIM 6X10	5.22
D2008057A	PARALLEL KEY	6.76
D2008112A	PARALLEL KEY	6.96
D2252004A	BALL HEAD M8	102.60
D2252034A	BALL JOINT UNIBAL SFL8	94.45
D2253004A	UNIBAL JOINT SMG8	122.60
D2253034A	UNIBAL JOINT	83.47
D2861331A	FLANGE PN 16 DN 65	1808.46
D2901322A	GASKET	83.99
D2911013A	PACKING	10.00
D2911015A	PACKING FOR FLANGE	16.52
D2911034A	GASKET DN 40-PN16	10.00
D2925001A	PACKING G 10X14	4.65
D2925003A	GASKET 14X18 UNI 3443	5.22
D2925004A	PACKING RING	9.92
D2925005A	PACKING RING	5.88
D2925006A	PACKING RING	4.43
D2925007A	GASKET 24X28	5.22
D2925008A	JOINT RING 28X32	5.22
D2925009A	GASKET 32X36 UNI 3443	9.25
D2925010A	GASKET 34x39	5.22
D2925013A	GASKET	4.80
D2925110A	GASKET, COPPER	20.87
D3016021P	RUBBER SLEEVE	66.00
D3017005A	PIPE WRENCH FOR RUBBER SLEEVE	16.52
D3017007A	PIPE WRENCH FOR RUBBER SLEEVE	20.00
D3017020A	CLAMP	9.39
D3017026A	CLAMP	13.04
D3017028A	CLAMP 30-45 W5	16.94
D3017057A	O-RING SEAL	62.40
D3017062A	COLLARE HEAVY DUTY "C1" 88-91 W5	72.57
D3017065A	CLAMP	49.93
D3076002A	CLAMP	42.61
D3076003A	PIPE CLAMP	33.91
D3076009A	CLAMP	68.69
D3077003A	CLAMP	6.96
D3077008A	PIPING CLAMP	6.61
D3078021A	CLAMP 38,5-43	34.78
D3078031A	CLAMP, HOSE 72,5-80	9.10
D3078032A	CLAMP 76,5-84 "GEATEC"	15.65
D3078033A	CLAMP 80-88	16.21
D3078035A	CLAMP 88-97	19.59
D3078036A	CLAMP	22.61
D3078043A	CLAMP	95.75
D3078046A	CLAMP 135-150	34.43
D3079005A	JOINT STRAUB-FLEX D=48,3 (EPDM)	556.72
D3079087A	JOINT STRAUB-GRIP-L D=76,1 (EPDM)	779.03
D3079098A	COUPLING STRAUB-GRIP-L D=30,0 (EPDM)	554.05
D3079112A	STRAUB GRIP	269.19
D3081007A	WASHER 13X8, 7X1	4.70
D3081008A	BONDED SEAL RING	1.74
D3081010A	SEAL WASHER	3.56
D3081015A	WASHER 22X14,7X1,5	3.01

- Price and part number listed are valid for the North America market only
 - Price and part number listed may be changed without notice
 - Notwithstanding, the only binding price and part number are those identified in FMSNA Inc.'s official offer
 - Parts listed may be subject to U.S. export controls and subject to licensing if exported outside of the U.S.

May 2018 Diesel Engine Parts List

D3081016A	RING	6.96
D3081027A	RING, SEAL	6.19
D3081051A	WASHER 15,88X10,37X2,03	2.80
D3081054A	CHECK WASHER	12.00
D3081060A	WASHER	22.00
D3090005P	JOINT RING 13X8X1	3.65
D3090010P	JOINT RING	4.47
D3090012P	RING GASKET	4.70
D3090013P	GASKET	2.35
D3090017P	RING GASKET	2.08
D3090020P	GASKET	4.35
D3090023P	PACKING	3.40
D3090025P	PACKING 21X15	1.17
D3090026P	PACKING 22X16	2.50
D3090027A	PACKING	1.81
D3090032P	PACKING	4.45
D3090033P	PACKING	4.35
D3090037P	PACKING,PREFORMED	4.58
D3090038P	RING PACKING	3.61
D3090039P	RING PACKING	9.57
D3090041P	JOINT RING FOR TRANS.NIPPLE KS 27755	1.64
D3090044P	PACKING	1.27
D3090050P	RING JOINT	3.39
D3090054P	GASKET, COPPER	6.89
D3090061P	PACKING	6.29
D3090063P	RING GASKETS	2.51
D3090067P	PACKING	8.70
D3090068P	PACKING	10.21
D3090071P	GASKET 42X43	10.44
D3090280A	WASHER, COPPER	1.74
D3090281A	GASKET	3.41
D3090282A	GASKET	1.27
D3090283A	GASKET	2.35
D3090284A	WASHER, COPPER	3.46
D3090285A	GASKET	4.35
D3090286A	RING GASKET	5.34
D3090287A	GASKET 16,5X13,5X1	8.26
D3090288A	JOINT RING	6.86
D3090293A	RING GASKET	5.22
D3090294A	GASKET 18.5X15X1	4.49
D3090295A	PACKING 19.5X14.5X1	8.40
D3090302A	COPPER WASHER	3.41
D3090304A	COPPER GASKET	5.34
D3090308A	WASHER,FLAT	1.62
D3090311A	GASKET	5.22
D3090313A	WASHER, COPPER	2.89
D3090319A	PACKING,PREFORMED	5.22
D3090320A	GASKET	4.56
D3090322A	GASKET	4.94
D3090323A	JOINT RING	4.35
D3090327A	GASKET	4.00
D3090332A	GASKET	4.31
D3090338A	GASKET	4.87
D3090344A	GASKET 35.5X30.5X1	6.44
D3090345A	COPPER RING GASKET	1.49
D3090349A	COPPER WASHER	2.44
D3090359A	GASKET 42X36X2	3.42
D3090361A	GASKET	63.58
D3090413P	PACKING	4.24
D3093011A	GASKET	12.00
D3093042A	SEAL, OIL MIM 22X40X7 DIN 3760	35.93
D3093056A	SEAL RING TYPE CORTECO	25.19
D3093057A	SEAL, OIL	8.00
D3093070A	SEAL RING TYPE CORTECO	32.17
D3093093A	SEAL RING	22.85

- Price and part number listed are valid for the North America market only
 - Price and part number listed may be changed without notice
 - Notwithstanding, the only binding price and part number are those identified in FMSNA Inc.'s official offer
 - Parts listed may be subject to U.S. export controls and subject to licensing if exported outside of the U.S.

May 2018 Diesel Engine Parts List

D3112405A	O-RING		0.34
D3112409A	O-RING		1.36
D3112420A	O-RING		0.70
D3112605A	O-RING	4,47X1,78	1.72
D3112610A	O-RING	8,74X1,78	0.49
D3112613A	O-RING	11,10X1,78	3.05
D3112614A	O-RING	12.42X1.78	2.36
D3112615A	O-RING	14,00X1,78.	1.22
D3112619A	O-RING	20,35X1,78	1.00
D3113011A	O-RING		12.00
D3113404A	O-RING	28,25X2,62	3.13
D3113409A	PACKING		2.02
D3113412A	O-RING SEAL		9.25
D3113417A	O-RING		0.70
D3113419A	ORING		5.22
D3113421A	O RING SEAL		4.70
D3113426A	O-RING		3.90
D3113427A	O-RING		1.25
D3113429A	O-RING SEAL		4.89
D3113431A	O-RING SEAL		6.82
D3113433A	O-RING SEAL		5.01
D3113435A	O-RING	44,12x2,62	6.39
D3113437A	ORING	2-134, S604-70	9.55
D3113438A	O-RING Seal		2.99
D3113439A	O-RING		4.56
D3113448A	O-RING SEAL		4.45
D3113451A	SEAL RING		1.53
D3113452A	ORING		2.02
D3113455A	O-RING		1.00
D3113458A	O-RING SEAL		20.47
D3113606A	O-RING SEAL		4.73
D3113607A	O-RING SEAL		0.53
D3113609A	ORING		2.26
D3113610A	O-RING	11,91X2,62	3.15
D3113613A	O-RING		2.90
D3113614A	O-RING SEAL	15.34X2.62	2.43
D3113620A	O-RING	20,29X2,62	1.96
D3113622A	O-RING	23,47X2,62	2.42
D3113623A	O-RING	25,07X2,62	5.22
D3113624A	GASKET		4.40
D3113626A	ORING SEAL		4.84
D3113627A	O-RING		3.60
D3113628A	PACKING,PREFORMED		2.00
D3113629A	O-RING		4.46
D3113631A	O RING SEAL	37.77x2.62	3.39
D3113632A	O-RING		3.32
D3113633A	O-RING SEAL		3.45
D3113635A	O-RING		2.21
D3113636A	O-RING SEAL		5.20
D3113637A	O-RING SEAL		4.28
D3113639A	ORING SEAL		7.83
D3113641A	PACKING		8.09
D3113643A	ORING		6.09
D3113644A	SEAL RING		6.24
D3113651A	O-RING		6.96
D3113654A	O-RING	75,87X2,62	9.80
D3113656A	O-RING	88,57X2,62	8.66
D3113658A	O-RING	101,27X2,62	13.69
D3113671A	O-RING	23,81X2,62	3.48
D3114024A	O-RING		3.97
D3114031A	O-RING		4.75
D3114037A	O-RING		2.80
D3114047A	O-RING		2.09
D3114401A	O-RING	41,28X3,53	8.69
D3114403A	O-RING		6.82

- Price and part number listed are valid for the North America market only
 - Price and part number listed may be changed without notice
 - Notwithstanding, the only binding price and part number are those identified in FMSNA Inc.'s official offer
 - Parts listed may be subject to U.S. export controls and subject to licensing if exported outside of the U.S.

May 2018 Diesel Engine Parts List

D3114404A	O-RING	7.83
D3114411A	O-RING SEAL	5.86
D3114412A	O-RING	2.61
D3114413A	O-RING 23,39X3,53	6.29
D3114415A	GASKET	5.44
D3114418A	O-RING 29,74x3,53	3.22
D3114420A	O-RING SEAL	4.28
D3114422A	O-RING SEAL	5.54
D3114423A	O-RING SEAL	4.17
D3114424A	O-RING 39,60x3,53	3.99
D3114425A	O-RING SEAL	9.44
D3114426A	O-RING SEAL	6.70
D3114427A	SEAL RING	5.74
D3114428A	O-RING SEAL	5.22
D3114430A	O-RING 49,20x3,53	5.22
D3114433A	O-RING SEAL	5.22
D3114434A	O-RING SEAL	9.57
D3114437A	O-RING 61,24X3,53	8.83
D3114439A	O-RING 65,09X3,53	8.47
D3114441A	O-RING SEAL	9.57
D3114442A	O-RING SEAL	7.27
D3114444A	O-RING	2.23
D3114446A	O-RING SEAL	10.44
D3114447A	O-RING SEAL	13.92
D3114448A	O-RING	3.99
D3114449A	O-RING SEAL	15.63
D3114450A	O-RING	14.77
D3114451A	SEAL RING	2.17
D3114453A	ORING SEAL	18.00
D3114454A	O-RING 101,19x3,53	8.07
D3114455A	O-RING SEAL	9.76
D3114463A	O-RING	25.03
D3114464A	SEAL RING	13.39
D3114466A	SEAL RING	11.15
D3114470A	O-RING SEAL	25.77
D3114472A	O-RING	14.78
D3114473A	O-RING	28.70
D3114475A	O-RING SEAL	23.19
D3114476A	O-RING	21.46
D3114490A	O-RING	8.09
D3114601A	O-RING	3.39
D3114602A	O-RING 55.56 X 3.53 VITON	6.96
D3114608A	O-RING 15.47X3.53	2.42
D3114612A	O-RING 21,82X3,53	2.49
D3114613A	O-RING 23,39X3,53	9.60
D3114614A	O-RING SEAL	2.37
D3114615A	O-RING FRONT COVER	3.13
D3114616A	O-RING	1.78
D3114617A	O-RING SEAL	4.66
D3114618A	O-RING 29.74X3.53	3.60
D3114619A	O-RING	4.14
D3114620A	O-RING	5.67
D3114621A	O-RING	5.48
D3114622A	O-RING 36,09X3,53	3.21
D3114623A	O-RING SEAL	12.18
D3114624A	O-RING SEAL	5.91
D3114625A	O-RING 40.87X3.53	6.06
D3114626A	O-RING SEAL	10.36
D3114627A	ORING 44.04 x 3.53	8.70
D3114628A	O-RING 45,36X3,53	5.88
D3114630A	O-RING 49,20X3,53	8.33
D3114633A	O-RING	6.59
D3114634A	O-RING	7.26
D3114635A	O-RING	9.65
D3114637A	O-RING SEAL 61.24X3.53	9.41

- Price and part number listed are valid for the North America market only
 - Price and part number listed may be changed without notice
 - Notwithstanding, the only binding price and part number are those identified in FMSNA Inc.'s official offer
 - Parts listed may be subject to U.S. export controls and subject to licensing if exported outside of the U.S.

May 2018 Diesel Engine Parts List

D3114638A	O-RING SEAL	8.69
D3114639A	O-RING	16.38
D3114642A	O-RING	9.57
D3114643A	PACKING	5.83
D3114644A	O-RING 72.62X3.53	21.38
D3114645A	ORING	6.96
D3114647A	O-RING	11.31
D3114648A	O-RING	10.43
D3114650A	SEAL RING	10.72
D3114653A	O-RING SEAL	8.45
D3114659A	O-RING	12.12
D3114660A	O-RING SEAL	12.17
D3114661A	O-RING SEAL	20.18
D3114663A	O-RING 129.77X3.53	10.91
D3114666A	O-RING	26.95
D3114667A	O-RING	9.39
D3114670A	O-RING	20.87
D3114672A	O-RING SEAL	12.96
D3114674A	O-RING SEAL	33.04
D3114676A	O-RING	25.49
D3114690A	O-RING	6.96
D3115417A	O-RING	6.23
D3115421A	O-RING	2.79
D3115423A	ORING	9.20
D3115426A	O-RING SEAL	10.92
D3115428A	O-RING SEAL	13.05
D3115432A	O-RING 85,09X5,33 * v. D3115432A	13.16
D3115434A	O-RING	13.36
D3115458A	O-RING	3.43
D3115614A	O-RING	14.30
D3115619A	ORING 43.82 X 5.33	9.80
D3115624A	O-RING SEAL	12.86
D3115644A	ORING SEAL	19.06
D3136005A	UNION	28.14
D3136006A	PASSING PLATE JIC-JIC 1" 1/16-12	49.93
D3160103A	PIPE BUSH	12.03
D3160133A	NUT 7/16	24.34
D3162002A	SEAL RING	3.15
D3162003A	SEAL RING	6.63
D3162006A	SEAL RING	4.00
D3162022A	CHECK RING	3.64
D3162023A	CHECK RING	3.00
D3162026A	CHECK RING	2.40
D3165001A	UNION A	29.56
D3165016A	UNION L 7/8-14 J 1/2G	59.50
D3165025A	RUN ADJ TEE 1"5/8-12 JIC - BSBB	132.16
D3166003A	BODY	6.96
D3167003A	BODY	31.30
D3167004A	CASING	28.69
D3168002A	FITTING 90	25.21
D3169002A	UNION	54.61
D3173013A	FITTING 90 DEG. G 1" 1/4	162.50
D3175002A	CONNECTOR	26.89
D3175003A	UNION	27.18
D3175008A	UNION	52.17
D3176024A	JUNCTION JIC	161.65
D3182003A	CONNECTOR JIC-BSPP ORING AND R	90.41
D3182005A	Union 9/16-18 JIC -1/4" BSPP	133.03
D3182008A	UNION 7/8-14 JIC X 1/2 BSPP	15.44
D3182009A	FITTING	26.08
D3182011A	BODY	53.41
D3182059A	NIPPLE	83.34
D3182080A	NIPPLE TUBE	37.72
D3182095A	CONNECTOR	186.93
D3182119A	BODY	14.78

- Price and part number listed are valid for the North America market only
 - Price and part number listed may be changed without notice
 - Notwithstanding, the only binding price and part number are those identified in FMSNA Inc.'s official offer
 - Parts listed may be subject to U.S. export controls and subject to licensing if exported outside of the U.S.

May 2018 Diesel Engine Parts List

D3182120A	HOUSING	12.52
D3182203A	STRAIGHT UNION	9.56
D3182212A	BODY	69.38
D3182214A	CONNECTOR	18.78
D3182255A	UNION PIECE	7.83
D3183003A	BODY	30.43
D3183004A	FITTING 90DEG	28.92
D3183005A	UNION PIECE	19.20
D3183007A	UNION	19.01
D3183008A	BODY	41.73
D3183010A	TUBE, 90° ELBOW	59.99
D3183011A	UNION	39.65
D3183013A	UNION	38.99
D3183016A	UNION 90	31.30
D3183019A	CONNECTOR	48.75
D3183022A	UNION 90	42.38
D3183103A	FITTING	23.93
D3183104A	UNION	30.43
D3183106A	HOUSING	28.54
D3183108A	UNION	30.00
D3183111A	90° ELBOWS M20x1.5 - JIC 7/8-14	25.96
D3183112A	UNION	36.52
D3183113A	UNION	66.91
D3183203A	BODY	46.85
D3183206A	ELBOW 90DEG 3/4	24.34
D3183209A	90 "FOR" UNION	32.41
D3183210A	UNION 90	125.20
D3183316A	UNION 90	293.87
D3183323A	ELBOW 90°	183.85
D3184005A	UNION PIECE	23.88
D3184013A	UNION "T"	59.12
D3184026A	UNION	120.86
D3184040A	CASING	36.17
D3185003A	UNION PIECE	13.48
D3185005A	UNION PIECE	10.02
D3185008A	UNION PIECE	30.43
D3185012A	UNION PIECE	45.21
D3186009A	FEM. 7/8-14J MALE 9/16 UNION	22.09
D3186010A	UNION JUNCTION	25.46
D3187001A	BODY	15.65
D3187002A	UNION	21.13
D3187005A	UNION SWIVEL	24.00
D3187009A	UNION 90 "FOR"	57.96
D3187010A	ADAPTOR ELBOW	31.00
D3187042A	90# ELBOW	117.37
D3188001A	SWIVEL BRANCH TEE	26.89
D3188006A	UNION	28.52
D3188007A	INTERMED UNION	26.95
D3188008A	UNION PIECE	96.01
D3190002A	HOLLOW SCREW	25.61
D3190054A	BOLT, FLUID PASSAGE	43.30
D3195019A	90° LONG ELBOW JIC-GAS	119.98
D3195110A	CABLE	56.52
D3297020A	SCREW G 1/4	8.71
D3404506A	MANIFOLD	24.34
D3404508A	MANIFOLD	66.08
D3404510A	MANIFOLD	15.65
D3891045A	BALL VALVE DN25-PN40	243.82
D3891053A	BALL VALVE DN15-PN40	71.99
D3892001A	BALL VALVE, SPECIAL	41.74
D4711057A	MANOMETER	727.74
DA866T-75CM	WATER REGULATING VALVE	4128.45
DG118007002J	AIR FILTER CARTRIDGE	1410.55
DG118007005J	TEMPERATURE SWITCH 60*c	1633.87
DG118007006J	OIL LEVEL SWITCH (257litre)	775.80

- Price and part number listed are valid for the North America market only
 - Price and part number listed may be changed without notice
 - Notwithstanding, the only binding price and part number are those identified in FMSNA Inc.'s official offer
 - Parts listed may be subject to U.S. export controls and subject to licensing if exported outside of the U.S.

May 2018 Diesel Engine Parts List

DG118007007J	OIL LEVEL SWITCH (204 liter)	775.80
DG118007015J	RETURN FILTER CARTRIDGE	423.17
DG118007016J	HEAT EXCHANGER	4701.85
DG118007017J	PRESSURE RELIEF VALVE (100 bar)	3291.29
DG118007018J	E/VALVE NG6 (V1) 24VDC	517.20
DG118007019J	E/VALVE NG6 (V2) 24VDC	587.73
DG118007020J	CHECK VALVE 01 BAR	305.62
DG118007021J	CHECK VALVE 8 BAR	108.98
DG118007026J	PRESSURE GAUGE 0-160 BAR	195.87
DG118007027J	HAND PUMP 100BAR 43CC/SHOT	1224.22
DG118007028J	PRESSURE SWITCH (PS19) 25 BAR	752.30
DG118007029J	PRESSURE SWITCH (PS18) 2 BAR	752.30
DG118007030J	PRESSURE RELIEF VALVE 50-300 BAR	442.22
DG118007031J	DIRECTION VALVE NG10	2586.02
DG118007032J	DIRECTION VALVE NG6	1546.63
DG118007038J	DIRECTION VALVE NG16	1880.74
DG118007039J	PRESSURE SWITCH PS22 65 BAR	752.30
DG118007048J	SHUTTLE VALVE	258.60
DG118007049J	DIRECTION VALVE NG10	2233.38
DG118007050J	PRESSURE GAUGE 0-250 BAR	188.07
DG118007051J	TEMPERATURE SWITCH 60*c	1394.23
DG118007059J	CHECK VALVE 17 BAR	176.32
DG118007061J	PLUG 1 1/4" BSP	57.38
DG118175005J	SPACER,SLEEVE	2703.56
DG118175006J	SPACER,SLEEVE	2350.92
DG118226004J	FLANGE	88.34
DG118226014J	ADAPTOR	66.26
DG118226017J	ADJUSTABLE TEE	44.17
DG118226020J	ADAPTOR	39.76
DG118226021J	COUPLING	71.99
DG118226119J	ADAPTOR	839.20
DL1CB006	LAMP,INCANDESCENT	15.65
ERKNFA102IC	TEMP SENSOR	359.96
FC234-10	HYDRAULIC HOSE	24.17
FDGMSK-C-94078	MODIFIED COUPLING	695.57
GV2ME07	CIRCUIT BREAKER	345.18
HC-F015-1000-04	VALVE, OIL SAMPLING	184.10
J10-16GE-BSPPV-SPL	ADAPTOR	298.12
J8GC	ADAPTOR	33.22
JHSV005	KIT FIELD SERVICE ISOTTA COALESCER	562.81
JHSV006	KIT FIELD SERVICE ISOTTA AIR FILTER	611.12
JHSV010	O-RING	6.26
JHSV013	COALESCER KIT 2 PK FIELD SERVICE KIT	399.86
JHSV016	J/W HEAT EXCHANGER PLATE PACK GASKET KIT	3319.22
JHSV018	M5X-F ASSEMBLY	42702.65
LCS009	ORING, OIL COOLER	16.69
LCS010	OIL VALVE ASSY, MODIFIED	2643.05
LCS011	MODIFIED PLUG	57.31
LCS018	CONNECTOR FOR SENSOR	4.37
LCS019	CONNECTOR,FEMALE	0.48
LCS020	HOSE, NONMETALLIC	212.95
LCS022	WATER MANIFOLD END GASKETS	6.40
LIDO-1	VALVE,CARTRIDGE	1880.74
LSA49.1M75	LSA 49.1M75 GENERATOR	49167.60
M111107001	KEYBOARD WIRING HARNESS	486.90
M2600020A40000	M10X 20 HCS A-4	853.99
M600003005	M5X-F DATA AND EVENT RECORDER	33247.76
M602003001	JHSV TOOLKIT WITH OVEN AND TRACKBALL UNITS	47037.25
M602010001	SOLID 156HS	18075.86
M607008003	THERMO15 THERMOCOUPLE INTERFACE UNIT	7825.05
M611100001	KEYBOARD UNIT	3043.08
M82580020A40000	M8 X 20 HCS A-4	95.87
M82600025A40000	M10 X 25 HCS A-4	414.08
MARK8(M)	ANGLE VALVE	651.57
MCM008	CYLINDER LINER SHIMS	41.30

- Price and part number listed are valid for the North America market only
 - Price and part number listed may be changed without notice
 - Notwithstanding, the only binding price and part number are those identified in FMSNA Inc.'s official offer
 - Parts listed may be subject to U.S. export controls and subject to licensing if exported outside of the U.S.

May 2018 Diesel Engine Parts List

MCM010	TUBE ASSY	397.81
MCM020	TUBE ASSY	175.34
MCM039	TUBE, ENGINE OIL TO PILOT	293.70
MCM043	TUBE, AIR FROM PILOT SHUTDOWN	121.37
MCM045	HOSE ASSEMBLY, NONMETALLIC	354.08
MCM046	BRACKET, VALVE	161.87
MCM048	BRACKET PILOT VALVE	569.92
MCM074	HOSE ASSEMBLY, NONMETALLIC	414.90
MCM089	GASKET	19.65
MCM128	BOLT ADJUSTABLE MOUNT	2310.34
MCM131	BUSHING SLEEVE	238.40
MCM133	FLAT WASHER	39.17
MCM140	BOLT	10.29
MCM141	HEX HD 1"-8 UNC X 6" LG	22.10
MCM180	CLAMP	64.19
MCM181	CLAMP	22.52
MCM189	SPECIAL TEE	331.26
MCM191	FILTREX ASSY	96423.50
MCM196	GASKET 1 1/2" IPS COOLER	13.65
MCM197	SPRING, EXTENSION 5 1/2'	21.70
MCM206	CLAMP V-BAND 10" SS	68.91
MCM207	O-RING 10" OUTER .210" X 372	11.63
MCM213	OIL TUBE	61.30
MCM214	OIL TUBE	73.25
MCM215	OIL TUBE	63.35
MCM221	TUBE,WATER PUMP	4805.53
MCM222	PRELUBE HOSE ASSY	314.28
MCM227	HOSE, 6" DUCT	42.49
MCM228	CLAMP, 5.0" T-BOLT	12.94
MCM229	CLAMP, 6.25" T-BOLT	20.54
MCM237	HOSE ASSEMBLY	672.78
MCM241	COMPOUND VACUUM GAUGE	269.53
MCM261	ISOTTA MCM AIR FILTER ENG. KIT	651.63
MCM269	SEA WATER PIPE	5033.25
MCM277	GASKET	12.61
MCM284	PIPE, SW SUPPLY TO HEAT	4522.54
MCM313	EXPANSION JOINT	2312.77
MCM314	SS RING SET	799.91
MCM318	STUD, SPECIAL	41.02
MCM344	BRACKET	146.07
MCM346	BALL VALVE, PNEUMATIC	1039.64
MCM347	BALL VALVE, PNEUMATIC	865.83
MCM348	Low Lube Oil Shutdown Valve Re	2049.50
MCM350	6V ENGINE CHANGEOUT KIT	23339.04
MCM353	HYD. MOTOR MAINTENANCE KIT FILTREX	333.05
MCM358	SEA WATER FLANGE GASKET	57.16
MCM360	HOSE, EXHAUST MANIFOLD VENT	417.34
MHC013	PISTON COOLING ADAPTOR	112.92
MHC095	HOSE ASSEMBLY, FUEL DRAIN	167.70
MHC096	STEM	76.29
MHC131	AMOT VALVE (MODIFIED)	4169.15
MHC158	HOSE 1 1/4" WALKERFLEX BLACK, 50 FT	1056.50
MHC159	DRAIN HOSE	132.71
MHC161	BARB 3/8 IN NPT MALE X 1/2" HOSE 45*	7.18
MHC162	CLAMP, 1 1/4"SS HOSE #20	3.43
MHC174	9" X 14" TAPER AIR FILTER	258.84
MHC175	9.5" AIR FILTER SPRING	8.17
MHC178	CLAMP #6 REGULAR	3.17
MHC180	CLAMP	31.15
MHC181	HOSE, 90DEG ELBOW X 1 1/4"	20.78
MHC196	2807-4 X 36" C/W 190600-4C E/E	353.11
MHC265	OPTICAL SENSOR BLOCK	1656.33
MHC305	DAMPNER, FLUID PRESSURE	547.76
MHC318	PISTON COOLING OIL PRESSURE	2434.84
MHC324	SPECIAL STUD	217.36

- Price and part number listed are valid for the North America market only
 - Price and part number listed may be changed without notice
 - Notwithstanding, the only binding price and part number are those identified in FMSNA Inc.'s official offer
 - Parts listed may be subject to U.S. export controls and subject to licensing if exported outside of the U.S.

May 2018 Diesel Engine Parts List

MHC337	BALL VALVE MS 3/4-16VNF	522.88
MHC338	METALLIC PARTICLE DETECTOR	3948.81
MHC356	PIN	7.59
MHC373	SEA WATER INLET HOSE ASSY	30123.28
MHC389	1/2 X 6FT. GS RED C/W 102-0808 E/E	122.19
MHC427	HOSE ASSEMBLY	454.27
MHC460	TEST AND TAG	29.39
MHC524	15" GRADUATED REST. IND.	49.37
MHC526	KNOB, BLACK PLASTIC	7.99
MHC528	OIL NUT	1.26
MHC534	AIR FILTER CLEANING KIT	40.00
MHC538	HANDWHEEL	420.82
MHC539	GAUGE, SLUDGE W/DC SWITCH	8192.60
MHC656	GASKETS, FILTER SET COMPLETE	999.87
MHC657	SELF-CLEANING FILTERING ELEMENT	18101.95
MHC658	SLUDGE RECOVERY UNIT CARTRIDGE	12546.16
MHC659	GEARED MOTOR, RF.O5.IM	8520.61
MHC661	DIFFERENTIAL PRESSURE GAUGE	8602.25
MHC662	COUPLING, SHAFT, RIGID	8294.56
MHC663	LID GASKET FOR 2000/18	29.92
MHC664	GASKET, BOWL	13.42
MHC665	FILTER ELEMENT	59.82
MHC667	SHAFT, PRIMARY BACKWASHING	7554.13
MHC668	SLUDGE RECOVERY BACKWASHING SHAFT	5181.93
MHC669	GASKET	9.01
MHC670	PRIMARY GASKET	19.83
MHC671	RECOVERY GASKET	9.48
MHC681	BACKWASHING GASKET	60.00
MHC686	SUPPORT GEAR HYDRAULIC MOTOR	482.65
MHC694 / MHC699	GEAR HYDRAULIC MOTOR EXTERNAL FITTINGS	1195.58
MHC704	SAFETY VALVE SET	359.95
MHC707	SPRING CASSETTE	59.82
MHC709	RETAINING RING	43.47
MHC715	BLEED VALVE O-RING FOR 2000/10	2.79
MHC718	VALVE, REVERSING	633.39
MHC729	PUMP, PRELUBE	12259.25
MHC732	BEARING AND BUSHING KIT	1147.68
MHC733	BOLTS FOR PRIMARY CARTRIDGE COVER TO HOUSING	74.77
MHC740	REPLACEMENT WING BOLT KIT	56.10
MHC741	WASHER FOR SCREWS	0.36
MHC767	SWIVEL ELBOW TUBE	257.36
MHC775	CENTRIFUGE OIL FILTER SERVICE	72.97
MHC779	GENERATOR PRELUBE AIR HOSE	501.21
MHC780	TESTED AND TAGGED	583.10
MHC786	ADAPTOR	302.54
MHC797	CLASS B 8V MAIN ENGINE REBUILD KIT	98757.68
MHC798	CLASS B 8V GENERATOR REBUILD KIT	72714.93
MO248A	NITRITE TEST KIT	430.38
N02 124 530	GAGE,PRESSURE,DIAL	131.04
PEL010FA004	SLOW BLOW FUSE	0.52
PSTM 100	SWITCH,PRESSURE	752.30
PSTM 16	SWITCH,PRESSURE	752.30
Q0001	NUT, ELASTIC STOP 3/4-10	2.68
R123370 POS 0026	BUSHING, SLEEVE	419.95
RM4JA32MW	RELAY,ELECTROMAGNET	358.93
SCD-76482	SINGLE BODY FUEL PUMP MODIFICATION	24594.13
SCD-76484	TURBOCHARGER MODIFICATION	48577.47
SE-030H03B	FILTER ELEMENT,FLUI	382.91
SKH38S-32-1113	VALVE,BALL	587.73
SS350-24	BEARING,BALL,ANNULA	31.21
SS350-270	RING,RETAINING	3.90
SS350-339	BEARING,BALL,ANNULA	50.63
SS350-359	BEARING,BALL,ANNULA	53.11
SS350-363	BEARING,BALL,ANNULA	33.14
SS350-394	AIR STARTER PINION	11.34

- Price and part number listed are valid for the North America market only
 - Price and part number listed may be changed without notice
 - Notwithstanding, the only binding price and part number are those identified in FMSNA Inc.'s official offer
 - Parts listed may be subject to U.S. export controls and subject to licensing if exported outside of the U.S.

May 2018 Diesel Engine Parts List

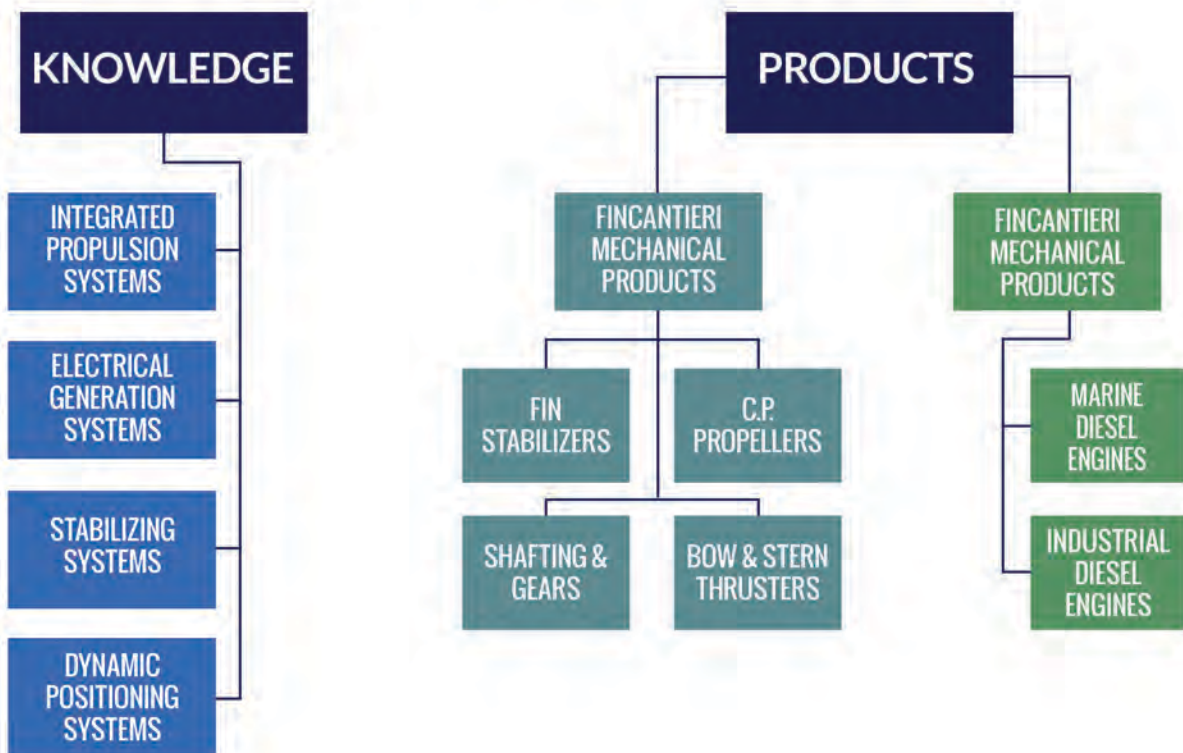
SS350-700	SPRING,HELICAL,COMP	25.47
SS350-TK2	PARTS KIT,STARTER D	144.42
SS-QM2-S-M8X1	MINIATURE QUICK CONNECT STEM METRIC	136.78
T3 16	SEAL,PLAIN	42.05
TM-2A-212R	TEMP SWITCH	104.34
TSX DEY 16A2	BOARD, 24V, 16 CHANGE	1102.43
TSXAEY1600	16 CHANNEL VOLTAGE/CURRENT ANALOG INUT BOARD	2534.00
TSXDSY32T2K	32 DIGITAL OUTPUT BOARD 24VCC	1495.34
TSXMCPC224K	MEMORY CARD,PERSONA	957.22
TSXP572623M	COMPUTER SUBASSEMBL	7685.94
TSXPSY1610M	POWER SUPPLY	605.58
TSXPSY3610M	POWER SUPPLY	1054.96
V1312C2ME-HPCR	DIESEL GENERATOR W/O CONTROL SYSTEM	536029.43
V1708C2ME8-1800	ENGINE, DSL GENSET	1245228.00
V1708T2ME8KIT	DEPLOYMENT KIT	256642.42
VEN999FV008	FILTER 49.1	117.90
VR	CLOGGED FILTER INDICATOR (LCS-3 ONLY)	168.30
WLR009	TUBE ASSY	115.17
WLR010	TUBE ASSY	115.17
WLR093	#16 MJIC X 1" MPT 45 DEG HYD.	27.37
WLR095	#16 MJIC X 1" MPT 90 DEG HYD.	116.58
WLR109	FITTING	10.29
WLR110	FITTING	12.10
WLR111	1/4" TEE	56.88
WLR112	UNION TEE	42.64
WLR114	ELBOW	25.58
WLR121	PUMP, ELECTRICAL 220 VAC 60 HZ	568.83
WLR122	HEATING ELEMENT 220 VAC 60 HZ	629.92
WLR128	OIL PAN GASKET KIT	229.83
WLR134	J/W PUMP REBUILD KIT	153.93
WLR137	CYLINDER HEAD CHANGE OUT KIT W/ HEAD	4462.16
XB4BA21	SWITCH,PUSH	40.16
XB4BD21	SWITCH,ROTARY	64.38
XB4BD53	SWITCH,ROTARY	86.61
XB4BG21	SWITCH SUBASSEMBLY	142.96
ZB4BA3 + ZB4BZ101	SWITCH SUBASSEMBLY	40.99
ZB4BA4 + ZB4BZ101	SWITCH SUBASSEMBLY	40.99
ZB4BA5 + ZBE102	SWITCH SUBASSEMBLY	34.80
ZB4BV04	SWITCH SUBASSEMBLY	120.49
ZB4BV07	SWITCH SUBASSEMBLY	12.28
ZHC-23	ANODE, INTERCEPTOR BLADE	159.98

- Price and part number listed are valid for the North America market only
 - Price and part number listed may be changed without notice
 - Notwithstanding, the only binding price and part number are those identified in FMSNA Inc.'s official offer
 - Parts listed may be subject to U.S. export controls and subject to licensing if exported outside of the U.S.

THE PREMIER SOURCE FOR INTEGRATED MARINE SYSTEMS

Fincantieri Marine Systems is a U.S. Corporation and is part of the Fincantieri group of Italy. Fincantieri Marine Systems represents the products of Fincantieri and its subsidiary companies on a worldwide basis, and offers products and services to the Department of Defense, the department of Homeland Security, and to Commercial Business. We bring experience and expertise in integrating engineering plant components and then marrying the plant to a ship's hull. We are the premier source for Integrated Marine Systems.

MARKET & SUPPORT



We do it all; we engineer, integrate, source, purchase, deliver to building yards, install, test, and deliver to satisfied clients all over the world.